

'	Sin. 14	Dif.	Tang. 14	Dif. c.	Cot. 14	Cos. 14	'
30	9.59860	49	9.41266	52	0.58734	9.98594	30
31	9.59909	49	9.41318	52	0.58682	9.98591	29
52	9.59958	48	9.41370	52	0.58630	9.98588	28
33	9.40006	49	9.41422	52	0.58578	9.98584	27
34	9.40055	48	9.41474	52	0.58526	9.98581	26
55	9.40103	49	9.41526	52	0.58474	9.98578	25
36	9.40152	48	9.41578	51	0.58422	9.98574	24
57	9.40200	49	9.41629	52	0.58371	9.98571	23
38	9.40249	48	9.41681	52	0.58319	9.98568	22
39	9.40297	49	9.41733	51	0.58267	9.98565	21
40	9.40346	48	9.41784	52	0.58216	9.98561	20
41	9.40394	48	9.41836	51	0.58164	9.98558	19
42	9.40442	48	9.41887	52	0.58113	9.98555	18
43	9.40490	48	9.41939	51	0.58061	9.98551	17
44	9.40538	48	9.41990	51	0.58010	9.98548	16
45	9.40586	48	9.42041	52	0.57969	9.98545	15
46	9.40634	48	9.42093	51	0.57907	9.98541	14
47	9.40682	48	9.42144	51	0.57856	9.98538	13
48	9.40730	48	9.42195	51	0.57805	9.98535	12
49	9.40778	47	9.42246	51	0.57754	9.98531	11
50	9.40825	48	9.42297	51	0.57703	9.98528	10
51	9.40873	48	9.42348	51	0.57652	9.98525	9
52	9.40921	47	9.42399	51	0.57601	9.98521	8
53	9.40968	48	9.42450	51	0.57550	9.98518	7
54	9.41016	47	9.42501	51	0.57499	9.98515	6
55	9.41063	48	9.42552	51	0.57448	9.98511	5
56	9.41111	47	9.42603	50	0.57397	9.98508	4
57	9.41158	47	9.42653	51	0.57347	9.98505	3
58	9.41205	47	9.42704	51	0.57296	9.98501	2
59	9.41252	48	9.42755	51	0.57245	9.98498	1
60	9.41300	48	9.42805	50	0.57195	9.98494	0
	Cos. 75		Cot. 75		Tang. 75	Sin. 75	

'	Sin. 15	Dif.	Tang. 15	Dif. c.	Cot. 15	Cos. 15	'
0	9.41300		9.42805		0.57195	9.98494	60
1	9.41347	47	9.42856	51	0.57144	9.98491	59
2	9.41394	47	9.42906	50	0.57094	9.98488	58
		47		51			
3	9.41441	47	9.42957	50	0.57043	9.98484	57
4	9.41488	47	9.43007	50	0.56993	9.98481	56
5	9.41535	47	9.43057	50	0.56943	9.98477	55
		47		51			
6	9.41582	46	9.43108	50	0.56892	9.98474	54
7	9.41628	46	9.43158	50	0.56842	9.98471	53
8	9.41675	47	9.43208	50	0.56792	9.98467	52
		47		50			
9	9.41722	46	9.43258	50	0.56742	9.98464	51
10	9.41768	46	9.43308	50	0.56692	9.98460	50
11	9.41815	47	9.43358	50	0.56642	9.98457	49
		46		50			
12	9.41861	47	9.43408	50	0.56592	9.98453	48
13	9.41908	47	9.43458	50	0.56542	9.98450	47
14	9.41954	46	9.43508	50	0.56492	9.98447	46
		47		50			
15	9.42001	46	9.43558	49	0.56442	9.98443	45
16	9.42047	46	9.43607	50	0.56393	9.98440	44
17	9.42093	46	9.43657	50	0.56343	9.98436	43
		47		50			
18	9.42140	46	9.43707	49	0.56293	9.98433	42
19	9.42186	46	9.43756	49	0.56244	9.98429	41
20	9.42232	46	9.43806	50	0.56194	9.98426	40
		46		49			
21	9.42278	46	9.43855	50	0.56145	9.98422	39
22	9.42324	46	9.43905	49	0.56095	9.98419	38
23	9.42370	46	9.43954	49	0.56046	9.98415	37
		46		50			
24	9.42416	45	9.44004	49	0.55996	9.98412	36
25	9.42461	46	9.44053	49	0.55947	9.98409	35
26	9.42507	46	9.44102	49	0.55898	9.98405	34
		46		49			
27	9.42553	46	9.44151	50	0.55849	9.98402	33
28	9.42599	45	9.44201	49	0.55799	9.98398	32
29	9.42644	46	9.44250	49	0.55750	9.98395	31
30	9.42690	46	9.44299	49	0.55701	9.98391	30
	Cos. 74		Cot. 74		Tang. 74	Sin. 74	

'	Sin. 15	Dif.	Tang. 15	Dif.c.	Cot. 15	Cos. 15	'
30	9.42690	45	9.44299	49	0.55701	9.98391	30
31	9.42735	46	9.44348	49	0.55652	9.98388	29
32	9.42781	45	9.44397	49	0.55603	9.98384	28
33	9.42826	46	9.44446	49	0.55554	9.98381	27
34	9.42872	45	9.44495	49	0.55505	9.98377	26
35	9.42917	45	9.44544	48	0.55456	9.98373	25
36	9.42962	46	9.44592	49	0.55408	9.98370	24
37	9.43008	45	9.44641	49	0.55359	9.98366	23
38	9.43053	45	9.44690	48	0.55310	9.98363	22
39	9.43098	45	9.44738	49	0.55262	9.98359	21
40	9.43143	45	9.44787	49	0.55213	9.98356	20
41	9.43188	45	9.44836	49	0.55164	9.98352	19
42	9.43233	45	9.44884	48	0.55116	9.98349	18
43	9.43278	45	9.44933	49	0.55067	9.98345	17
44	9.43323	44	9.44981	48	0.55019	9.98342	16
45	9.43367	45	9.45029	48	0.54971	9.98338	15
46	9.43412	45	9.45078	49	0.54922	9.98334	14
47	9.43457	45	9.45126	48	0.54874	9.98331	13
48	9.43502	44	9.45174	48	0.54826	9.98327	12
49	9.43546	45	9.45222	48	0.54778	9.98324	11
50	9.43591	44	9.45271	49	0.54729	9.98320	10
51	9.43635	45	9.45319	48	0.54681	9.98317	9
52	9.43680	44	9.45367	48	0.54633	9.98313	8
53	9.43724	45	9.45415	48	0.54585	9.98309	7
54	9.43769	44	9.45463	48	0.54537	9.98306	6
55	9.43813	44	9.45511	48	0.54489	9.98302	5
56	9.43857	44	9.45559	48	0.54441	9.98299	4
57	9.43901	44	9.45606	47	0.54394	9.98295	3
58	9.43946	45	9.45654	48	0.54346	9.98291	2
59	9.43990	44	9.45702	48	0.54298	9.98288	1
60	9.44034	44	9.45750	48	0.54250	9.98284	0
	Cos. 74		Cot. 74		Tang. 74	Sin. 74	

'	Sin. 16	Dif.	Tang. 16	Dif. c.	Cot. 16	Cos. 16	'
0	9.44034	44	9.45750	47	0.54250	9.98284	60
1	9.44078	44	9.45797	48	0.54203	9.98281	59
2	9.44122	44	9.45845	47	0.54155	9.98277	58
3	9.44166	44	9.45892	48	0.54108	9.98273	57
4	9.44210	43	9.45940	47	0.54060	9.98270	56
5	9.44253	44	9.45987	48	0.54013	9.98266	55
6	9.44297	44	9.46035	47	0.53965	9.98262	54
7	9.44341	44	9.46082	48	0.53918	9.98259	53
8	9.44385	43	9.46130	47	0.53870	9.98255	52
9	9.44428	44	9.46177	48	0.53823	9.98251	51
10	9.44472	44	9.46224	47	0.53776	9.98248	50
11	9.44516	43	9.46271	48	0.53729	9.98244	49
12	9.44559	43	9.46319	47	0.53681	9.98240	48
13	9.44602	44	9.46366	47	0.53633	9.98237	47
14	9.44646	43	9.46413	47	0.53587	9.98233	46
15	9.44689	44	9.46460	47	0.53540	9.98229	45
16	9.44733	43	9.46507	47	0.53493	9.98226	44
17	9.44776	43	9.46554	47	0.53446	9.98222	43
18	9.44819	43	9.46601	47	0.53399	9.98218	42
19	9.44862	43	9.46648	46	0.53352	9.98215	41
20	9.44905	43	9.46694	47	0.53306	9.98211	40
21	9.44948	44	9.46741	47	0.53259	9.98207	39
22	9.44992	43	9.46788	46	0.53212	9.98204	38
23	9.45035	42	9.46835	47	0.53165	9.98200	37
24	9.45077	43	9.46881	47	0.53119	9.98196	36
25	9.45120	43	9.46928	47	0.53072	9.98192	35
26	9.45163	43	9.46975	46	0.53025	9.98189	34
27	9.45206	43	9.47021	46	0.52979	9.98185	33
28	9.45249	43	9.47068	46	0.52932	9.98181	32
29	9.45292	42	9.47114	46	0.52886	9.98177	31
30	9.45334		9.47160	46	0.52840	9.98174	30
	Cos. 75		Cot. 73		Tang. 75	Sin. 73	

'	Sin. 16	Dif.	Tang. 16	Dif. c.	Cot. 16	Cos. 16	'
30	9.45334	45	9.47160	47	0.52840	9.98174	30
31	9.45377	42	9.47207	46	0.52793	9.98170	29
32	9.45419	43	9.47253	46	0.52747	9.98166	28
33	9.45462	42	9.47299	47	0.52701	9.98162	27
34	9.45504	43	9.47346	46	0.52654	9.98159	26
35	9.45547	42	9.47392	46	0.52608	9.98155	25
36	9.45589	43	9.47438	46	0.52562	9.98151	24
37	9.45632	42	9.47484	46	0.52516	9.98147	23
38	9.45674	42	9.47530	46	0.52470	9.98144	22
39	9.45716	42	9.47576	46	0.52424	9.98140	21
40	9.45758	43	9.47622	46	0.52378	9.98136	20
41	9.45801	42	9.47668	46	0.52332	9.98132	19
42	9.45843	42	9.47714	46	0.52286	9.98129	18
43	9.45885	42	9.47760	46	0.52240	9.98125	17
44	9.45927	42	9.47806	46	0.52194	9.98121	16
45	9.45969	42	9.47852	45	0.52148	9.98117	15
46	9.46011	42	9.47897	46	0.52103	9.98113	14
47	9.46053	42	9.47943	46	0.52057	9.98110	13
48	9.46095	41	9.47989	46	0.52011	9.98106	12
49	9.46136	42	9.48035	45	0.51965	9.98102	11
50	9.46178	42	9.48080	46	0.51920	9.98098	10
51	9.46220	42	9.48126	45	0.51874	9.98094	9
52	9.46262	41	9.48171	46	0.51829	9.98090	8
53	9.46303	42	9.48217	45	0.51783	9.98087	7
54	9.46345	41	9.48262	45	0.51738	9.98083	6
55	9.46386	42	9.48307	46	0.51693	9.98079	5
56	9.46428	41	9.48353	45	0.51647	9.98075	4
57	9.46469	42	9.48398	45	0.51602	9.98071	3
58	9.46511	41	9.48443	46	0.51557	9.98067	2
59	9.46552	42	9.48489	45	0.51511	9.98063	1
60	9.46594		9.48534		0.51466	9.98060	0
	Cos. 73		Cot. 73		Tang. 73	Sin. 73	

'	Sin. 17	Dif.	Tang. 17	Dif. c.	Cot. 17	Cos. 17	'
0	9.46594		9.48534		0.51466	9.98060	60
1	9.46635	41	9.48579	45	0.51421	9.98056	59
2	9.46676	41	9.48624	45	0.51376	9.98052	58
		41		45			
3	9.46717	41	9.48669	45	0.51331	9.98048	57
4	9.46758	41	9.48714	45	0.51286	9.98044	56
5	9.46800	42	9.48759	45	0.51241	9.98040	55
		41		45			
6	9.46841	41	9.48804	45	0.51196	9.98036	54
7	9.46882	41	9.48849	45	0.51151	9.98032	53
8	9.46923	41	9.48894	45	0.51106	9.98029	52
		41		45			
9	9.46964	41	9.48939	45	0.51061	9.98025	51
10	9.47005	41	9.48984	45	0.51016	9.98021	50
11	9.47045	40	9.49029	45	0.50971	9.98017	49
		41		44			
12	9.47086	41	9.49073	45	0.50927	9.98013	48
13	9.47127	41	9.49118	45	0.50882	9.98009	47
14	9.47168	41	9.49163	45	0.50837	9.98005	46
		41		44			
15	9.47209	40	9.49207	45	0.50793	9.98001	45
16	9.47249	41	9.49252	44	0.50748	9.97997	44
17	9.47290	41	9.49296	44	0.50704	9.97993	43
		40		45			
18	9.47330	41	9.49341	44	0.50659	9.97989	42
19	9.47371	41	9.49385	44	0.50615	9.97986	41
20	9.47411	40	9.49430	44	0.50570	9.97982	40
		41		44			
21	9.47452	40	9.49474	45	0.50526	9.97978	39
22	9.47492	41	9.49519	44	0.50481	9.97974	38
23	9.47533	41	9.49563	44	0.50437	9.97970	37
		40		44			
24	9.47573	40	9.49607	45	0.50393	9.97966	36
25	9.47613	41	9.49652	44	0.50348	9.97962	35
26	9.47654	41	9.49696	44	0.50304	9.97958	34
		40		44			
27	9.47694	40	9.49740	44	0.50260	9.97954	33
28	9.47734	40	9.49784	44	0.50216	9.97950	32
29	9.47774	40	9.49828	44	0.50172	9.97946	31
30	9.47814	40	9.49872	44	0.50128	9.97942	30
	Cos. 72		Cot. 72		Tang. 72	Sin. 72	

'	Sin. 17	Dif.	Tang. 17	Dif. c.	Cot. 17	Cos. 17	'
30	9.47814		9.49872		0.50128	9.97942	30
31	9.47854	40	9.49916	44	0.50084	9.97938	29
32	9.47894	40	9.49960	44	0.50040	9.97934	28
		40		44			
33	9.47934	40	9.50004	44	0.49996	9.97930	27
34	9.47974	40	9.50048	44	0.49952	9.97926	26
35	9.48014	40	9.50092	44	0.49908	9.97922	25
		40		44			
36	9.48054	40	9.50136	44	0.49864	9.97918	24
37	9.48094	39	9.50180	43	0.49820	9.97914	23
38	9.48133	39	9.50223	43	0.49777	9.97910	22
		40		44			
39	9.48173	40	9.50267	44	0.49733	9.97906	21
40	9.48213	40	9.50311	44	0.49689	9.97902	20
41	9.48252	39	9.50355	44	0.49645	9.97898	19
		40		43			
42	9.48292	40	9.50398	44	0.49602	9.97894	18
43	9.48332	40	9.50442	44	0.49558	9.97890	17
44	9.48371	39	9.50485	43	0.49515	9.97886	16
		40		44			
45	9.48411	39	9.50529	43	0.49471	9.97882	15
46	9.48450	40	9.50572	44	0.49428	9.97878	14
47	9.48490	39	9.50616	43	0.49384	9.97874	13
		40		44			
48	9.48529	39	9.50659	43	0.49341	9.97870	12
49	9.48568	39	9.50703	43	0.49297	9.97866	11
50	9.48607	39	9.50746	43	0.49254	9.97861	10
		40		43			
51	9.48647	39	9.50789	43	0.49211	9.97857	9
52	9.48686	39	9.50833	43	0.49167	9.97853	8
53	9.48725	39	9.50876	43	0.49124	9.97849	7
		39		43			
54	9.48764	39	9.50919	43	0.49081	9.97845	6
55	9.48803	39	9.50962	43	0.49038	9.97841	5
56	9.48842	39	9.51005	43	0.48995	9.97837	4
		39		43			
57	9.48881	39	9.51048	43	0.48952	9.97833	3
58	9.48920	39	9.51092	43	0.48908	9.97829	2
59	9.48959	39	9.51135	43	0.48865	9.97825	1
60	9.48998	39	9.51178	43	0.48822	9.97821	0
	Cos. 72		Cot. 72		Tang. 72	Sin. 72	

'	Sin. 18	Dif.	Tang. 18	Dif. c.	Cot. 18	Cos. 18	'
0	9.48998	39	9.51178	43	0.48822	9.97821	60
1	9.49037	39	9.51221	43	0.48779	9.97817	59
2	9.49076	39	9.51264	42	0.48736	9.97812	58
3	9.49115	38	9.51306	43	0.48694	9.97808	57
4	9.49153	39	9.51349	43	0.48651	9.97804	56
5	9.49192	39	9.51392	43	0.48608	9.97800	55
6	9.49231	38	9.51435	43	0.48565	9.97796	54
7	9.49269	39	9.51478	42	0.48522	9.97792	53
8	9.49308	39	9.51520	43	0.48480	9.97788	52
9	9.49347	38	9.51563	43	0.48437	9.97784	51
10	9.49385	39	9.51606	42	0.48394	9.97779	50
11	9.49424	38	9.51648	43	0.48352	9.97775	49
12	9.49462	38	9.51691	43	0.48309	9.97771	48
13	9.49500	39	9.51734	42	0.48266	9.97767	47
14	9.49539	38	9.51776	43	0.48224	9.97763	46
15	9.49577	38	9.51819	42	0.48181	9.97759	45
16	9.49615	39	9.51861	42	0.48139	9.97754	44
17	9.49654	38	9.51903	43	0.48097	9.97750	43
18	9.49692	38	9.51946	42	0.48054	9.97746	42
19	9.49730	38	9.51988	43	0.48012	9.97742	41
20	9.49768	38	9.52031	42	0.47969	9.97738	40
21	9.49806	38	9.52073	42	0.47927	9.97734	39
22	9.49844	38	9.52115	42	0.47885	9.97729	38
23	9.49882	38	9.52157	43	0.47843	9.97725	37
24	9.49920	38	9.52200	42	0.47800	9.97721	36
25	9.49958	38	9.52242	42	0.47758	9.97717	35
26	9.49996	38	9.52284	42	0.47716	9.97713	34
27	9.50034	38	9.52326	42	0.47674	9.97708	33
28	9.50072	38	9.52368	42	0.47632	9.97704	32
29	9.50110	38	9.52410	42	0.47590	9.97700	31
30	9.50148	38	9.52452	42	0.47548	9.97696	30
	Cos. 71		Cot. 71		Tang. 71	Sin. 71	

	Sin. 18	Dif.	Tang. 18	D. c.	Cot. 18	Cos. 18	Dif.	
30	9.50148		9.52452		0.47548	9.97696		30
31	9.50185	37	9.52494	42	0.47506	9.97691	5	29
32	9.50223	38	9.52536	42	0.47464	9.97687	4	28
		38		42			4	
33	9.50261		9.52578		0.47422	9.97683		27
34	9.50298	37	9.52620	42	0.47380	9.97679	4	26
35	9.50336	38	9.52661	41	0.47339	9.97674	5	25
		38		42			4	
36	9.50374		9.52703		0.47297	9.97670		24
37	9.50411	37	9.52745	42	0.47255	9.97666	4	23
38	9.50449	38	9.52787	42	0.47213	9.97662	4	22
		37		42			5	
39	9.50486		9.52829		0.47171	9.97657		21
40	9.50523	37	9.52870	41	0.47130	9.97653	4	20
41	9.50561	38	9.52912	42	0.47088	9.97649	4	19
		37		41			4	
42	9.50598		8.52953		0.47047	9.97645		18
43	9.50635	37	9.52995	42	0.47005	9.97640	5	17
44	9.50673	38	9.53037	42	0.46963	9.97636	4	16
		37		41			4	
45	9.50710		9.53078		0.46922	9.97632		15
46	9.50747	37	9.53120	42	0.46880	9.97628	4	14
47	9.50784	37	9.53161	41	0.46839	9.97623	5	13
		37		41			4	
48	9.50821		9.53202		0.46798	9.97619		12
49	9.50858	37	9.53244	42	0.46756	9.97615	4	11
50	9.50896	38	9.53285	41	0.46715	9.97610	5	10
		37		42			4	
51	9.50933		9.53327		0.46673	9.97606		9
52	9.50970	37	9.53368	41	0.46632	9.97602	4	8
53	9.51007	37	9.53409	41	0.46591	9.97597	5	7
		36		41			4	
54	9.51043		9.53450		0.46550	9.97593		6
55	9.51080	37	9.53492	42	0.46508	9.97589	4	5
56	9.51117	37	9.53533	41	0.46467	9.97584	5	4
		37		41			4	
57	9.51154		9.53574		0.46426	9.97580		3
58	9.51191	37	9.53615	41	0.46385	9.97576	4	2
59	9.51227	36	9.53656	41	0.46344	9.97571	5	1
60	9.51264	37	9.53697	41	0.46303	9.97567	4	0
	Cos. 71		Cot. 71		Tang. 71	Sin. 71		

'	Sin. 19	Dif.	Tang. 19	D.c.	Cot. 19	Cos. 13	Dif.	'
0	9.51264		9.53697		0.46303	9.97567		60
1	9.51301	37	9.53738	41	0.46262	9.97563	4	59
2	9.51338	37	9.53779	41	0.46221	9.97558	5	58
		36		41			4	
3	9.51374	37	9.53820	41	0.46180	9.97554	4	57
4	9.51411	36	9.53861	41	0.46135	9.97550	4	56
5	9.51447	36	9.53902	41	0.46098	9.97545	5	55
		37		41			4	
6	9.51484	36	9.53943	41	0.46057	9.97541	4	54
7	9.51520	37	9.53984	41	0.46016	9.97536	5	53
8	9.51557	36	9.54025	41	0.45975	9.97532	4	52
		36		40			4	
9	9.51593	36	9.54065	41	0.45935	9.97528	4	51
10	9.51629	37	9.54106	41	0.45894	9.97523	5	50
11	9.51666	36	9.54147	41	0.45855	9.97519	4	49
		36		40			4	
12	9.51702	36	9.54187	41	0.45813	9.97515	4	48
13	9.51738	36	9.54228	41	0.45772	9.97510	5	47
14	9.51774	36	9.54269	41	0.45731	9.97506	4	46
		37		40			5	
15	9.51811	36	9.54309	41	0.45691	9.97501	4	45
16	9.51847	36	9.54350	40	0.45650	9.97497	4	44
17	9.51883	36	9.54390	41	0.45610	9.97492	5	43
		36		41			4	
18	9.51919	36	9.54431	40	0.45569	9.97488	4	42
19	9.51955	36	9.54471	41	0.45529	9.97484	4	41
20	9.51991	36	9.54512	41	0.45488	9.97479	5	40
		36		40			4	
21	9.52027	36	9.54552	41	0.45448	9.97475	4	39
22	9.52063	36	9.54593	40	0.45407	9.97470	5	38
23	9.52099	36	9.54633	40	0.45367	9.97466	4	37
		36		40			5	
24	9.52135	36	9.54673	41	0.45327	9.97461	4	36
25	9.52171	36	9.54714	40	0.45286	9.97457	4	35
26	9.52207	35	9.54754	40	0.45246	9.97453	4	34
		36		40			5	
27	9.52242	36	9.54794	41	0.45206	9.97448	4	33
28	9.52278	36	9.54835	40	0.45165	9.97444	4	32
29	9.52314	36	9.54875	40	0.45125	9.97439	5	31
30	9.52350	36	9.54915	40	0.45085	9.97435	4	30
	Cos. 70		Cot. 70		Tang. 70	Sin. 70		

	Sin. 19	Dif.	Tang. 19	D. c.	Cot. 19	Cos. 19	Dif.	
30	9.52350		9.54915		0.45085	9.97435		30
31	9.52385	35	9.54955	40	0.45045	9.97430	5	29
32	9.52421	36	9.54995	40	0.45005	9.97426	4	28
		35		40			5	
33	9.52456		9.55035		0.44965	9.97421		27
34	9.52492	36	9.55075	40	0.44925	9.97417	4	26
35	9.52527	35	9.55115	40	0.44885	9.97412	5	25
		36		40			4	
36	9.52563		9.55155		0.44845	9.97408		24
37	9.52598	35	9.55195	40	0.44805	9.97403	5	23
38	9.52634	36	9.55235	40	0.44765	9.97399	4	22
		35		40			5	
39	9.52669		9.55275		0.44725	9.97394		21
40	9.52705	36	9.55315	40	0.44685	9.97390	4	20
41	9.52740	35	9.55355	40	0.44645	9.97385	5	19
		36		40			4	
42	9.52775		8.55395		0.44605	9.97381		18
43	9.52811	35	9.55434	39	0.44566	9.97376	5	17
44	9.52846	36	9.55474	40	0.44526	9.97372	4	16
		35		40			5	
45	9.52881		9.55514		0.44486	9.97367		15
46	9.52916	35	9.55554	40	0.44446	9.97363	4	14
47	9.52951	36	9.55593	39	0.44407	9.97358	5	13
		35		40			5	
48	9.52986		9.55633		0.44367	9.97353		12
49	9.53021	35	9.55673	40	0.44327	9.97349	4	11
50	9.53056	36	9.55712	39	0.44288	9.97344	5	10
		36		40			4	
51	9.53092		9.55752		0.44248	9.97340		9
52	9.53126	34	9.55791	39	0.44209	9.97335	5	8
53	9.53161	35	9.55831	40	0.44169	9.97331	4	7
		36		39			5	
54	9.53196		9.55870		0.44130	9.97326		6
55	9.53231	35	9.55910	40	0.44090	9.97322	4	5
56	9.53266	36	9.55949	39	0.44051	9.97317	5	4
		35		40			5	
57	9.53301		9.55989		0.44011	9.97312		3
58	9.53336	35	9.56028	39	0.43972	9.97308	4	2
59	9.53370	34	9.56067	39	0.43933	9.97303	5	1
60	9.53405	35	9.56107	40	0.43893	9.97299	4	0
		36						
	Cos. 70		Cot. 70		Tang. 70	Sin. 70		

'	Sin. 20	Dif.	Tang. 20	D. c.	Cot. 20	Cos. 20	Dif.	'
0	9.53405	35	9.56107		0.43893	9.97299	5	60
1	9.53440	35	9.56146	39	0.43854	9.97294	5	59
2	9.53475	34	9.56185	39	0.43815	9.97289	4	58
3	9.53509	35	9.56224	39	0.43776	9.97285	5	57
4	9.53544	34	9.56264	40	0.43736	9.97280	4	56
5	9.53578	35	9.56303	39	0.43697	9.97276	5	55
6	9.53613	34	9.56342	39	0.43658	9.97271	5	54
7	9.53647	35	9.56381	39	0.43619	9.97266	4	53
8	9.53682	34	9.56420	39	0.43580	9.97262	5	52
9	9.53716	35	9.56459	39	0.43541	9.97257	5	51
10	9.53751	34	9.56498	39	0.43502	9.97252	4	50
11	9.53785	34	9.56537	39	0.43463	9.97248	5	49
12	9.53819	35	9.56576	39	0.43424	9.97243	5	48
13	9.53854	34	9.56615	39	0.43385	9.97238	4	47
14	9.53888	34	9.56654	39	0.43346	9.97234	5	46
15	9.53922	35	9.56693	39	0.43307	9.97229	5	45
16	9.53957	34	9.56732	39	0.43268	9.97224	4	44
17	9.53991	34	9.56771	39	0.43229	9.97220	5	43
18	9.54025	34	9.56810	39	0.43190	9.97215	5	42
19	9.54059	34	9.56849	38	0.43151	9.97210	4	41
20	9.54093	34	9.56887	39	0.43115	9.97206	5	40
21	9.54127	34	9.56926	39	0.43074	9.97201	5	39
22	9.54161	34	9.56965	39	0.43035	9.97196	4	38
23	9.54195	34	9.57004	38	0.42996	9.97192	5	37
24	9.54229	34	9.57042	39	0.42958	9.97187	5	36
25	9.54263	34	9.57081	39	0.42919	9.97182	4	35
26	9.54297	34	9.57120	38	0.42880	9.97178	5	34
27	9.54331	34	9.57158	39	0.42842	9.97173	5	33
28	9.54365	34	9.57197	38	0.42803	9.97168	5	32
29	9.54399	34	9.57235	39	0.42765	9.97163	4	31
30	9.54433		9.57274		0.42726	9.97159		30
	Cos. 69		Cot. 69		Tang. 69	Sin. 69		

	Sin. 20	Dif.	Tang. 20	D.c.	Cot. 20	Cos. 20	Dif.	
30	9.54433	33	9.57274	38	0.42726	9.97159	5	30
31	9.54466	34	9.57312	39	0.42688	9.97154	5	29
32	9.54500	34	9.57351	38	0.42649	9.97149	4	28
33	9.54534	33	9.57389	39	0.42611	9.97145	5	27
34	9.54567	34	9.57428	38	0.42572	9.97140	5	26
35	9.54601	34	9.57466	38	0.42534	9.97135	5	25
36	9.54635	33	9.57504	39	0.42496	9.97130	4	24
37	9.54668	34	9.57543	38	0.42457	9.97126	5	23
38	9.54702	33	9.57581	38	0.42419	9.97121	5	22
39	9.54735	34	9.57619	39	0.42381	9.97116	5	21
40	9.54769	33	9.57658	38	0.42342	9.97111	5	20
41	9.54802	34	9.57696	38	0.42304	9.97107	4	19
42	9.54836	33	9.57734	38	0.42266	9.97102	5	18
43	9.54869	34	9.57772	38	0.42228	9.97097	5	17
44	9.54903	33	9.57810	39	0.42190	9.97092	5	16
45	9.54936	33	9.57849	38	0.42151	9.97087	4	15
46	9.54969	34	9.57887	38	0.42113	9.97083	5	14
47	9.55003	33	9.57925	38	0.42075	9.97078	5	13
48	9.55036	33	9.57963	38	0.42037	9.97073	5	12
49	9.55069	33	9.58001	38	0.41999	9.97068	5	11
50	9.55102	34	9.58039	38	0.41961	9.97063	4	10
51	9.55136	33	9.58077	38	0.41923	9.97059	5	9
52	9.55169	33	9.58115	38	0.41885	9.97054	5	8
53	9.55202	33	9.58153	38	0.41847	9.97049	5	7
54	9.55235	33	9.58191	38	0.41809	9.97044	5	6
55	9.55268	33	9.58229	38	0.41771	9.97039	5	5
56	9.55301	33	9.58267	37	0.41733	9.97035	4	4
57	9.55334	33	9.58304	38	0.41696	9.97030	5	3
58	9.55367	33	9.58342	38	0.41658	9.97025	5	2
59	9.55400	33	9.58380	38	0.41620	9.97020	5	1
60	9.55433	33	9.58418	38	0.41582	9.97015	5	0
	Cos. 69		Cot. 69		Tang. 69	Sin. 69		

'	Sin. 21	Dif.	Tang 21	D.c.	Cot. 21	Cos. 21	Dif.	'
0	9.55435	33	9.58418	37	0.41582	9.97015	5	60
1	9.55466	33	9.58455	38	0.41545	9.97010	5	59
2	9.55499	33	9.58493	38	0.41507	9.97005	4	58
3	9.55532	32	9.58531	38	0.41469	9.97001	5	57
4	9.55564	33	9.58569	37	0.41431	9.96996	5	56
5	9.55597	33	9.58606	38	0.41394	9.96991	5	55
6	9.55630	33	9.58644	37	0.41356	9.96986	5	54
7	9.55663	32	9.58681	38	0.41319	9.96981	5	53
8	9.55695	33	9.58719	38	0.41281	9.96976	5	52
9	9.55728	33	9.58757	37	0.41243	9.96971	5	51
10	9.55761	32	9.58794	38	0.41206	9.96966	5	50
11	9.55793	33	9.58832	37	0.41168	9.96962	4	49
12	9.55826	32	9.58869	38	0.41131	9.96957	5	48
13	9.55858	33	9.58907	37	0.41093	9.96952	5	47
14	9.55891	32	9.58944	37	0.41056	9.96947	5	46
15	9.55923	33	9.58981	38	0.41019	9.96942	5	45
16	9.55956	32	9.59019	37	0.40981	9.96947	5	44
17	9.55988	33	9.59056	38	0.40944	9.96932	5	43
18	9.56021	32	9.59094	37	0.40906	9.96927	5	42
19	9.56053	32	9.59131	37	0.40869	9.96922	5	41
20	9.56085	33	9.59168	37	0.40832	9.96917	5	40
21	9.56118	32	9.59206	38	0.40795	9.96912	5	39
22	9.56150	32	9.59243	37	0.40757	9.96907	5	38
23	9.56182	33	9.59280	37	0.40720	9.96903	4	37
24	9.56215	32	9.59317	37	0.40683	9.96898	5	36
25	9.56247	32	9.59354	37	0.40646	9.96893	5	35
26	9.56279	32	9.59391	38	0.40609	9.96888	5	34
27	9.56311	32	9.59429	37	0.40571	9.96883	5	33
28	9.56343	32	9.59466	37	0.40534	9.96878	5	32
29	9.56375	33	9.59503	37	0.40497	9.96873	5	31
30	9.56408	33	9.59540	37	0.40460	9.96868	5	30
	Cos. 68		Cot. 68		Tang. 68	Sin. 68		

'	Sin. 21	Dif	Tang. 21	D. c.	Cot. 21	Cos. 21	Dif.	'
30	9.56408	32	9.59540	37	0.40460	9.96868	5	30
31	9.56440	32	9.59577	37	0.40423	9.96863	5	29
32	9.56472	32	9.59614	37	0.40386	9.96858	5	28
		32		37			5	
33	9.56504	32	9.59651	37	0.40349	9.96853	5	27
34	9.56536	32	9.59688	37	0.40312	9.96848	5	26
35	9.56568	31	9.59725	37	0.40275	9.96843	5	25
		32		37			5	
36	9.56599	32	9.59762	37	0.40238	9.96838	5	24
37	9.56631	32	9.59799	36	0.40201	9.96833	5	23
38	9.56663	32	9.59835	37	0.40165	9.96828	5	22
		32		37			5	
39	9.56695	32	9.59872	37	0.40128	9.96823	5	21
40	9.56727	32	9.59909	37	0.40091	9.96818	5	20
41	9.56759	31	9.59946	37	0.40054	9.96813	5	19
		32		37			5	
42	9.56790	32	9.59983	36	0.40017	9.96808	5	18
43	9.56822	32	9.60019	37	0.39981	9.96803	5	17
44	9.56854	32	9.60056	37	0.39944	9.96798	5	16
		32		37			5	
45	9.56886	31	9.60093	37	0.39907	9.96793	5	15
46	9.56917	32	9.60130	36	0.39870	9.96788	5	14
47	9.56949	31	9.60166	37	0.39834	9.96783	5	13
		32		37			5	
48	9.56980	32	9.60203	37	0.39797	9.96778	6	12
49	9.57012	32	9.60240	36	0.39760	9.96772	5	11
50	9.57044	31	9.60276	37	0.39724	9.96767	5	10
		32		36			5	
51	9.57075	32	9.60313	36	0.39687	9.96762	5	9
52	9.57107	31	9.60349	37	0.39651	9.96757	5	8
53	9.57138	31	9.60386	36	0.39614	9.96752	5	7
		32		36			5	
54	9.57169	32	9.60422	37	0.39578	9.96747	5	6
55	9.57201	31	9.60459	36	0.39541	9.96742	5	5
56	9.57232	32	9.60495	37	0.39505	9.96737	5	4
		32		37			5	
57	9.57264	31	9.60532	36	0.39468	9.96732	5	3
58	9.57295	31	9.60568	37	0.39432	9.96727	5	2
59	9.57326	32	9.60605	36	0.39395	9.96722	5	1
60	9.57358	32	9.60641	36	0.39359	9.96717	5	0
	Cos. 68		Cot. 68		Tang. 68	Sin. 68		

'	Sin. 22	Dif.	Tang. 22	D.c.	Cot. 22	Cos. 22	Dif.	'
0	9.57358		9.60641		0.39359	9.96717		60
1	9.57389	31	9.60677	36	0.39323	9.96711	6	59
2	9.57420	31	9.60714	37	0.39286	9.96706	5	58
		31		36			5	
3	9.57451	31	9.60750	36	0.39250	9.96701	5	57
4	9.57482	31	9.60786	36	0.39214	9.96696	5	56
5	9.57514	32	9.60823	37	0.39177	9.96691	5	55
		31		36			5	
6	9.57545	31	9.60859	36	0.39141	9.96686	5	54
7	9.57576	31	9.60895	36	0.39105	9.96681	5	53
8	9.57607	31	9.60931	36	0.39069	9.96676	5	52
		31		36			6	
9	9.57638	31	9.60967	37	0.39033	9.96670	5	51
10	9.57669	31	9.61004	36	0.38996	9.96665	5	50
11	9.57700	31	9.61040	36	0.38960	9.96660	5	49
		31		36			5	
12	9.57731	31	9.61076	36	0.38924	9.96655	5	48
13	9.57762	31	9.61112	36	0.38888	9.96650	5	47
14	9.57793	31	9.61148	36	0.38852	9.96655	5	46
		31		36			5	
15	9.57824	31	9.61184	36	0.38816	9.96640	6	45
16	9.57855	30	9.61220	36	0.38780	9.96634	6	44
17	9.57885	31	9.61256	36	0.38744	9.96629	5	43
		31		36			5	
18	9.57916	31	9.61292	36	0.38708	9.96624	5	42
19	9.57947	31	9.61328	36	0.38672	9.96619	5	41
20	9.57978	30	9.61364	36	0.38636	9.96614	5	40
		30		36			6	
21	9.58008	31	9.61400	36	0.38600	9.96608	5	39
22	9.58039	31	9.61436	36	0.38564	9.96603	5	38
23	9.58070	31	9.61472	36	0.38528	9.96598	5	37
		31		36			5	
24	9.58101	30	9.61508	36	0.38492	9.96593	5	36
25	9.58131	31	9.61544	35	0.38456	9.96588	5	35
26	9.58162	30	9.61579	35	0.38421	9.96582	6	34
		30		36			5	
27	9.58192	31	9.61615	36	0.38385	9.96577	5	33
28	9.58223	30	9.61651	36	0.38349	9.96572	5	32
29	9.58253	31	9.61687	35	0.38313	9.96567	5	31
30	9.58284	31	9.61722	35	0.38278	9.96562	5	30
	Cos. 67		Cot. 67		Tang. 67	Sin. 67		

'	Sin. 22	Dif.	Tang. 22	D.c.	Cot. 22	Cos. 22	Dif.	'
30	9.58284	30	9.61722	36	0.38278	9.96562	6	30
31	9.58314	31	9.61758	36	0.38242	9.96556	5	29
32	9.58345	30	9.61794	36	0.38206	9.96551	5	28
33	9.58376	31	9.61830	36	0.38170	9.96546	5	27
34	9.58406	30	9.61865	36	0.38135	9.96541	6	26
35	9.58436	31	9.61901	35	0.38099	9.96535	5	25
36	9.58467	30	9.61936	36	0.38064	9.96530	5	24
37	9.58497	30	9.61972	36	0.38028	9.96525	5	23
38	9.58527	30	9.62008	35	0.37992	9.96520	6	22
39	9.58557	31	9.62043	36	0.37957	9.96514	5	21
40	9.58588	30	9.62079	35	0.37921	9.96509	5	20
41	9.58618	30	9.62114	36	0.37886	9.96504	6	19
42	9.58648	30	9.62150	35	0.37850	9.96498	5	18
43	9.58678	31	9.62185	36	0.37815	9.96493	5	17
44	9.58709	30	9.62221	35	0.37779	9.96488	6	16
45	9.58739	30	9.62256	36	0.37744	9.96483	6	15
46	9.58769	30	9.62292	35	0.37708	9.96477	5	14
47	9.58799	30	9.62327	35	0.37673	9.96472	5	13
48	9.58829	30	9.62362	36	0.37638	9.96467	6	12
49	9.58859	30	9.62398	35	0.37602	9.96461	5	11
50	9.58889	30	9.62433	35	0.37567	9.96456	5	10
51	9.58919	30	9.62468	36	0.37532	9.96451	6	9
52	9.58949	30	9.62504	35	0.37496	9.96445	5	8
53	9.58979	30	9.62539	35	0.37461	9.96440	5	7
54	9.59009	30	9.62574	35	0.37426	9.96435	6	6
55	9.59039	30	9.62609	36	0.37391	9.96429	5	5
56	9.59069	29	9.62645	35	0.37355	9.96424	5	4
57	6.59098	30	9.62680	35	0.37320	9.96419	5	3
58	9.59128	30	9.62715	35	0.37285	9.96413	6	2
59	9.59158	30	9.62750	35	0.37250	9.96408	5	1
60	9.59188	30	9.62785	35	0.37215	9.96403	5	0
	Cos. 67		Cot. 67		Tang. 67	Sin. 67		

'	Sin. 23	Dif.	Tang. 23	D. c.	Cot. 23	Cos. 23	Dif.	'
0	9.59188		9.62785		0.37215	9.96405		60
1	9.59218	30	9.62820	35	0.37180	9.96397	6	59
2	9.59247	29	9.62855	35	0.37145	9.96392	5	58
		30		35			5	
3	9.59277	30	9.62890		0.37110	9.96387		57
4	9.59307	30	9.62926	36	0.37074	9.96381	6	56
5	9.59336	29	9.62961	35	0.37039	9.96376	5	55
		30		35			6	
6	9.59366	30	9.62996		0.37004	9.96370		54
7	9.59396	30	9.63031	35	0.36969	9.96365	5	53
8	9.59425	29	9.63066	35	0.36934	9.96360	5	52
		30		35			6	
9	9.59455		9.63101		0.36899	9.96354		51
10	9.59484	29	9.63135	34	0.36865	9.96349	5	50
11	9.59514	30	9.63170	35	0.36830	9.96343	6	49
		29		35			5	
12	9.59543	30	9.63205		0.36795	9.96338		48
13	9.59573	30	9.63240	35	0.36760	9.96333	5	47
14	9.59602	29	9.63275	35	0.36725	9.96327	6	46
		30		35			5	
15	9.59632		9.63310		0.36690	9.96322		45
16	9.59661	29	9.63345	35	0.36655	9.96316	6	44
17	9.59690	29	9.63379	34	0.36621	9.96311	5	43
		30		35			6	
18	9.59720		9.63414		0.36586	9.96305		42
19	9.59749	29	9.63449	35	0.36551	9.96300	5	41
20	9.59778	29	9.63484	35	0.36516	9.96294	6	40
		30		35			5	
21	9.59808		9.63519		0.36481	9.96289		39
22	9.59837	29	9.63553	34	0.36447	9.96284	5	38
23	9.59866	29	9.63588	35	0.36412	9.96278	6	37
		29		35			5	
24	9.59895		9.63623		0.36377	9.96273		36
25	9.59924	29	9.63657	34	0.36343	9.96267	6	35
26	9.59954	30	9.63692	35	0.36308	9.96262	5	34
		29		34			6	
27	9.60083		9.63726		0.36274	9.96256		33
28	9.60112	29	9.63761	35	0.36239	9.96251	5	32
29	9.60141	29	9.63796	35	0.36204	9.96245	6	31
30	9.60170	29	9.63830	34	0.36170	9.96240	5	30
	Cos. 66		Cot. 66		Tang. 66	Sin. 66		

'	Sin. 23	Dif.	Tang. 23	D. c.	Cot. 23	Cos. 23	Dif.	'
30	9.60070		9.63830		0.36170	9.96240		30
31	9.60099	29	9.63865	35	0.36135	9.96234	6	29
32	9.60128	29	9.63899	34	0.36101	9.96229	5	28
		29		35			6	
33	9.60157	29	9.63934	34	0.36066	9.96223	5	27
34	9.60186	29	9.63968	35	0.36032	9.96218	6	26
35	9.60215	29	9.64003	34	0.35997	9.96212	5	25
		29		35			6	
36	9.60244	29	9.64037	34	0.35965	9.96207	5	24
37	9.60273	29	9.64072	35	0.35928	9.96201	6	23
38	9.60302	29	9.64106	34	0.35894	9.96196	5	22
		29		35			6	
39	9.60331	28	9.64140	34	0.35860	9.96190	5	21
40	9.60359	29	9.64175	35	0.35825	9.96185	6	20
41	9.60388	29	9.64209	34	0.35791	9.96179	5	19
		29		35			6	
42	9.60417	29	9.64243	34	0.35757	9.96174	5	18
43	9.60446	28	9.64278	35	0.35722	9.96168	6	17
44	9.60474	29	9.64312	34	0.35688	9.96162	5	16
		29		35			6	
45	9.60503	29	9.64346	34	0.35654	9.96157	5	15
46	9.60532	29	9.64381	35	0.35619	9.96151	6	14
47	9.60561	29	9.64415	34	0.35585	9.96146	5	13
		28		35			6	
48	9.50589	29	9.64449	34	0.35551	9.96140	5	12
49	9.50618	28	9.64483	35	0.35517	9.96135	6	11
50	9.50646	29	9.64517	34	0.35483	9.96129	5	10
		29		35			6	
51	9.60675	29	9.64552	34	0.35448	9.96123	5	9
52	9.60704	28	9.64586	35	0.35414	9.96118	6	8
53	9.60732	29	9.64620	34	0.35380	9.96112	5	7
		29		35			6	
54	9.60761	28	9.64654	34	0.35346	9.96107	5	6
55	9.60789	29	9.64688	35	0.35312	9.96101	6	5
56	9.60818	29	9.64722	34	0.35278	9.96095	5	4
		28		35			6	
57	9.60846	29	9.64756	34	0.35244	9.96090	5	3
58	9.60875	28	9.64790	35	0.35210	9.96084	6	2
59	9.60903	28	9.64824	34	0.35176	9.96079	5	1
60	9.60931	28	9.64858	35	0.35142	9.96073	6	0
	Cos. 66		Cot. 66		Tang. 66	Sin. 66		

'	Sin. 24	Dif.	Tang. 24	D.c.	Cot. 24	Cos. 24	Dif.	'
0	9.60931	29	9.64858	34	0.35142	9.96073	6	60
1	9.60960	28	9.64892	34	0.35108	9.96067	5	59
2	9.60988	28	9.64926	34	0.35074	9.96062	6	58
3	9.61016	29	9.64960	34	0.35040	9.96056	6	57
4	9.61045	28	9.64994	34	0.35006	9.96050	5	56
5	9.61073	28	9.65028	34	0.34972	9.96045	6	55
6	9.61101	28	9.65062	34	0.34938	9.96039	5	54
7	9.61129	29	9.65096	34	0.34904	9.96034	6	53
8	9.61158	28	9.65130	34	0.34870	9.96028	6	52
9	9.61186	28	9.65164	33	0.34836	9.96022	5	51
10	9.61214	28	9.65197	34	0.34803	9.96017	6	50
11	9.61242	28	9.65231	34	0.34769	9.96011	6	49
12	9.61270	28	9.65265	34	0.34735	9.96005	5	48
13	9.61298	28	9.65299	34	0.34701	9.96000	6	47
14	9.61326	28	9.65333	33	0.34667	9.95994	6	46
15	9.61354	28	9.65366	34	0.34634	9.95988	6	45
16	9.61382	29	9.65400	34	0.34600	9.95982	5	44
17	9.61411	27	9.65434	33	0.34566	9.95977	6	43
18	9.61438	28	9.65467	34	0.34533	9.95971	6	42
19	9.61466	28	9.65501	34	0.34499	9.95965	5	41
20	9.61494	28	9.65535	33	0.34465	9.95960	6	40
21	9.61522	28	9.65568	34	0.34432	9.95954	6	39
22	9.61550	28	9.65602	34	0.34398	9.95948	6	38
23	9.61578	28	9.65636	33	0.34364	9.95942	5	37
24	9.61606	28	9.65669	34	0.34331	9.95937	6	36
25	9.61634	28	9.65703	33	0.34297	9.95931	6	35
26	9.61662	27	9.65736	34	0.34264	9.95925	5	34
27	9.61689	28	9.65770	33	0.34230	9.95920	6	33
28	9.61717	28	9.65803	34	0.34197	9.95914	6	32
29	9.61745	28	9.65837	33	0.34163	9.95908	6	31
30	9.61773	28	9.65870	33	0.34130	9.95902	6	30
	Cos. 65		Cot. 65		Tang. 65	Sin. 65		

'	Sin. 24	Dif.	Tang. 24	D.c.	Cot. 24	Cos. 24	Dif.	'
30	9.61773		9.65870		0.34130	9.95902		30
31	9.61800	27	9.65904	34	0.34096	9.95897	5	29
32	9.61828	28	9.65937	33	0.34063	9.95891	6	28
		28		34			6	
33	9.61856		9.66071		0.34029	9.95885		27
34	9.61883	27	9.66004	33	0.33996	9.95879	6	26
35	9.61911	28	9.66038	34	0.33962	9.95873	6	25
		28		33			5	
36	9.61939		9.66071		0.33929	9.95868		24
37	9.61966	27	9.66104	33	0.33896	9.95862	6	23
38	9.61994	28	9.66138	34	0.33862	9.95856	6	22
		27		33			6	
39	9.62021		9.66171		0.33829	9.95850		21
40	9.62049	28	9.66204	33	0.33796	9.95844	6	20
41	9.62076	27	9.66238	34	0.33762	9.95839	5	19
		28		33			6	
42	9.62104		9.66271		0.33729	9.95833		18
43	9.62131	27	9.66304	33	0.33696	9.95827	6	17
44	9.62159	28	9.66337	33	0.33663	9.95821	6	16
		27		34			6	
45	9.62186		9.66371		0.33629	9.95815		15
46	9.62214	28	9.66404	33	0.33596	9.95810	5	14
47	9.62241	27	9.66437	33	0.33563	9.95804	6	13
		27		33			6	
48	9.62268		9.66470		0.33530	9.95798		12
49	9.62296	28	9.66503	33	0.33497	9.95792	6	11
50	9.62323	27	9.66537	34	0.33463	9.95786	6	10
		27		33			6	
51	9.62350		9.66570		0.33430	9.95780		9
52	9.62377	27	9.66603	33	0.33397	9.95775	5	8
53	9.62405	28	9.66636	33	0.33364	9.95769	6	7
		27		33			6	
54	9.62432		9.66669		0.33331	9.95763		6
55	9.62459	27	9.66702	33	0.33298	9.95757	6	5
56	9.62486	27	9.66735	33	0.33265	9.95751	6	4
		27		33			6	
57	9.62513		9.66768		0.33232	9.95745		3
58	9.62541	28	9.66801	33	0.33199	9.95739	6	2
59	9.62568	27	9.66834	33	0.33166	9.95733	6	1
60	9.62595	27	9.66867	33	0.33133	9.95728	5	0
	Cos. 65		Cot. 65		Tang. 65	Sin. 65		

'	Sin. 25	Dif.	Fang. 25	D.c.	Cot. 25	Cos. 25	Dif.	'
0	9.62595		9.66867	33	0.33133	9.95728		60
1	9.62622	27	9.66900	33	0.33100	9.95722	6	59
2	9.62649	27	9.66933		0.33067	9.95716	6	58
		27		33			6	
3	9.62676	27	9.66966	33	0.33034	9.95710	6	57
4	9.62703	27	9.66999	33	0.33001	9.95704	6	56
5	9.62730	27	9.67032		0.32968	9.95698	6	55
		27		33			6	
6	9.62757	27	9.67065	33	0.32935	9.95692	6	54
7	9.62784	27	9.67098	33	0.32902	9.95686	6	55
8	9.62811	27	9.67131		0.32869	9.95680	6	52
		27		32			6	
9	9.62838	27	9.67163	33	0.32837	9.95674	6	51
10	9.62865	27	9.67196	33	0.32804	9.95668	6	50
11	9.62892	27	9.67229		0.32771	9.95663	5	49
		26		33			6	
12	9.62918	27	9.67262	55	0.32738	9.95657	6	48
13	9.62945	27	9.67295		0.32705	9.95651	6	47
14	9.62972	27	9.67327	32	0.32673	9.95645	6	46
		27		33			6	
15	9.62999	27	9.67360	33	0.32640	9.95639	6	45
16	9.63026	27	9.67393	33	0.32607	9.95633	6	44
17	9.63052	26	9.67426		0.32574	9.95627	6	43
		27		32			6	
18	9.63079	27	9.67458	33	0.32542	9.95621	6	42
19	9.63106	27	9.67491	33	0.32509	9.95615	6	41
20	9.63133	27	9.67524		0.32476	9.95609	6	40
		26		32			6	
21	9.63159	27	9.67556	33	0.32444	9.95603	6	39
22	9.63186	27	9.67589	33	0.32411	9.95597	6	38
23	9.63213	27	9.67622		0.32378	9.95591	6	37
		26		32			6	
24	9.63239	27	9.67654	33	0.32346	9.95585	6	36
25	9.63266	26	9.67687		0.32313	9.95579	6	35
26	9.63292	26	9.67719		0.32281	9.95573	6	34
		27		33			6	
27	9.63319	26	9.67752	33	0.32248	9.95567	6	33
28	9.63345	27	9.67785		0.32215	9.95561	6	32
29	9.63372	27	9.67817	32	0.32183	9.95555	6	31
30	9.63398	26	9.67850		0.32150	9.95549	6	30
				33				
	Cos. 64		Cot. 64		Fang. 64	Sin. 64		

	Sin. 25	Dif.	Tang. 25	D.c.	Cot. 25	Cos. 25	Dif.	
30	9.63398		9.67850		0.32150	9.95549		30
31	9.63425	27	9.67882	32	0.32118	9.95545	6	29
32	9.63451	26	9.67915	33	0.32085	9.95537	6	28
		27		32			6	
33	9.63478		9.67947		0.32053	9.95531		27
34	9.63504	26	9.67980	33	0.32020	9.95525	6	26
35	9.63531	27	9.68012	32	0.31988	9.95519	6	25
		26		32			6	
36	9.63557		9.68044		0.31956	9.95513		24
37	9.63583	26	9.68077	33	0.31923	9.95507	6	23
38	9.63610	27	9.68109	32	0.31891	9.95500	7	22
		26		33			6	
39	9.63636		9.68142		0.31858	9.95494		21
40	9.63662	26	9.68174	32	0.31826	9.95488	6	20
41	9.63689	27	9.68206	32	0.31794	9.95482	6	19
		26		33			6	
42	9.63715		9.68239		0.31761	9.95476		18
43	9.63741	26	9.68271	32	0.31729	9.95470	6	17
44	9.63767	26	9.68303	32	0.31697	9.95464	6	16
		27		33			6	
45	9.63794		9.68336		0.31664	9.95458		15
46	9.63820	26	9.68368	32	0.31632	9.95452	6	14
47	9.63846	26	9.68400	32	0.31600	9.95446	6	13
		26		32			6	
48	9.63872		9.68432		0.31568	9.95440		12
49	9.63898	26	9.68465	33	0.31536	9.95434	6	11
50	9.63924	26	9.68497	32	0.31503	9.95427	7	10
		26		32			6	
51	9.63950		9.68529		0.31471	9.95421		9
52	9.63976	26	9.68561	32	0.31439	9.95415	6	8
53	9.64002	26	9.68593	32	0.31407	9.95409	6	7
		26		33			6	
54	9.64028		9.68626		0.31374	9.95403		6
55	9.64054	26	9.68658	32	0.31342	9.95397	6	5
56	9.64080	26	9.68690	32	0.31310	9.95391	6	4
		26		32			6	
57	6.64106		9.68722		0.31278	9.95384		3
58	9.64132	26	9.68754	32	0.31246	9.95378	7	2
59	9.64158	26	9.68786	32	0.31214	9.95372	6	1
60	9.64184	26	9.68818	32	0.31182	9.95366	6	0
	Cos. 64		Tang. 64		Tang. 64	Sin. 64		

	Sin. 26	Dif.	Fang. 26	D. c.	Cot. 26	Cos. 26	Dif.	
0	9.64184	26	9.68818	32	0.31182	9.95366	6	60
1	9.64210	26	9.68850	32	0.31150	9.95360	6	59
2	9.64236	26	9.68882	32	0.31118	9.95354	6	58
3	9.64262	26	9.68914	32	0.31086	9.95348	6	57
4	9.64288	26	9.68946	32	0.31054	9.95341	7	56
5	9.64313	25	9.68978	32	0.31022	9.95335	6	55
6	9.64339	26	9.69010	32	0.30990	9.95329	6	54
7	9.64365	26	9.69042	32	0.30958	9.95323	6	53
8	9.64391	26	9.69074	32	0.30926	9.95317	6	52
9	9.64417	26	9.69106	32	0.30894	9.95310	7	51
10	9.64442	25	9.69138	32	0.30862	9.95304	6	50
11	9.64468	26	9.69170	32	0.30830	9.95298	6	49
12	9.64494	26	9.69202	32	0.30798	9.95292	6	48
13	9.64519	25	9.69234	32	0.30766	9.95286	6	47
14	9.64545	26	9.69266	32	0.30734	9.95279	7	46
15	9.64571	26	9.69298	32	0.30702	9.95273	6	45
16	9.64596	25	9.69329	31	0.30671	9.95267	6	44
17	9.64622	26	9.69361	32	0.30639	9.95261	6	43
18	9.64647	25	9.69393	32	0.30607	9.95254	7	42
19	9.64673	26	9.69425	32	0.30575	9.95248	6	41
20	9.64698	25	9.69457	32	0.30543	9.95242	6	40
21	9.64724	26	9.69488	31	0.30512	9.95236	6	39
22	9.64749	25	9.69520	32	0.30480	9.95229	7	38
23	9.64775	26	9.69552	32	0.30448	9.95223	6	37
24	9.64800	25	9.69584	32	0.30416	9.95217	6	36
25	9.64826	26	9.69615	31	0.30385	9.95211	6	35
26	9.64851	25	9.69647	32	0.30353	9.95204	7	34
27	9.64877	26	9.69679	32	0.30321	9.95198	6	33
28	9.64902	25	9.69710	31	0.30290	9.95192	6	32
29	9.64927	26	9.69742	32	0.30258	9.95185	7	31
30	9.64953	26	9.69774	32	0.30226	9.95179	6	30
	Cos. 63		Cot. 63		Fang. 63	Sin. 63		

'	Sin. 26	Dif.	Tang. 26	D. c.	Cot. 26	Cos. 26	Dif.	'
30	9.64953	25	9.69774	31	0.30226	9.95179	6	30
31	9.64978	25	9.69805	32	0.30195	9.95173	6	29
32	9.65003	26	9.69837	31	0.30163	9.95167	7	28
33	9.65029	25	9.69868	32	0.30132	9.95160	6	27
34	9.65054	25	9.69900	32	0.30100	9.95154	6	26
35	9.65079	25	9.69932	31	0.30068	9.95148	7	25
36	9.65104	26	9.69963	32	0.30037	9.95141	6	24
37	9.65130	25	9.69995	31	0.30005	9.95135	6	23
38	9.65155	25	9.70026	32	0.29974	9.95129	7	22
39	9.65180	25	9.70058	31	0.29942	9.95123	6	21
40	9.65205	25	9.70089	32	0.29911	9.95116	6	20
41	9.65230	25	9.70121	31	0.29879	9.95110	7	19
42	9.65255	26	9.70152	32	0.29848	9.95105	6	18
43	9.65281	25	9.70184	31	0.29816	9.95097	7	17
44	9.65306	25	9.70215	32	0.29785	9.95090	6	16
45	9.65331	25	9.70247	31	0.29753	9.95084	6	15
46	9.65356	25	9.70278	31	0.29722	9.95078	7	14
47	9.65381	25	9.70309	32	0.29691	9.95071	6	13
48	9.65406	25	9.70341	31	0.29659	9.95065	6	12
49	9.65431	25	9.70372	32	0.29628	9.95059	7	11
50	9.65456	25	9.70404	31	0.29596	9.95052	6	10
51	9.65481	25	9.70435	31	0.29565	9.95046	7	9
52	9.65506	25	9.70466	32	0.29534	9.95039	6	8
53	9.65531	25	9.70498	31	0.29502	9.95033	6	7
54	9.65556	24	9.70529	31	0.29471	9.95027	7	6
55	9.65580	25	9.70560	32	0.29440	9.95020	6	5
56	9.65605	25	9.70592	31	0.29408	9.95014	7	4
57	9.65630	25	9.70623	31	0.29377	9.95007	6	3
58	9.65655	25	9.70654	31	0.29346	9.95001	6	2
59	9.65680	25	9.70685	32	0.29315	9.94995	7	1
60	9.65705		9.70717		0.29283	9.94988		0
	Cos. 63		Cot. 63		Tang. 63	Sin. 63		

'	Sin. 27	Dif.	Tang. 27	D.c.	Cot. 27	Cos. 27	Dif	'
0	9.65705	24	9.70717	31	0.29283	9.94988	6	60
1	9.65729	25	9.70748	31	0.29252	9.94982	7	59
2	9.65754	25	9.70779	31	0.29221	9.94975	6	58
3	9.65779	25	9.70810	31	0.29190	9.94969	7	57
4	9.65804	24	9.70841	32	0.29159	9.94962	6	56
5	9.65828	25	9.70873	31	0.29127	9.94956	7	55
6	9.65853	25	9.70904	31	0.29096	9.94949	6	54
7	9.65878	24	9.70935	31	0.29065	9.94943	7	53
8	9.65902	25	9.70966	31	0.29034	9.94936	6	52
9	9.65927	25	9.70997	31	0.29003	9.94930	7	51
10	9.65952	24	9.71028	31	0.28972	9.94923	6	50
11	9.65976	25	9.71059	31	0.28941	9.94917	6	49
12	9.66001	24	9.71090	31	0.28910	9.94911	7	48
13	9.66025	25	9.71121	32	0.28879	9.94904	6	47
14	9.66050	25	9.71153	31	0.28847	9.94898	7	46
15	9.66075	24	9.71184	31	0.28816	9.94891	6	45
16	9.66099	25	9.71215	31	0.28785	9.94885	7	44
17	9.66124	24	9.71246	31	0.28754	9.94878	7	43
18	9.66148	25	9.71277	31	0.28723	9.94871	6	42
19	9.66173	24	9.71308	31	0.28692	9.94865	7	41
20	9.66197	24	9.71339	31	0.28661	9.94858	6	40
21	9.66221	25	9.71370	31	0.28630	9.94852	7	39
22	9.66246	24	9.71401	30	0.28599	9.94845	6	38
23	9.66270	25	9.71431	31	0.28569	9.94839	7	37
24	9.66295	24	9.71462	31	0.28538	9.94832	6	36
25	9.66319	24	9.71493	31	0.28507	9.94826	7	35
26	9.66343	25	9.71524	31	0.28476	9.94819	6	34
27	9.66368	24	9.71555	31	0.28445	9.94813	7	33
28	9.66392	24	9.71586	31	0.28414	9.94806	7	32
29	9.66416	25	9.71617	31	0.28383	9.94799	6	31
30	9.66441	25	9.71648	31	0.28352	9.94793	6	30
	Cos. 62		Tang. 62		Tang. 62	Sin. 62		

'	Sin. 27	Dif.	Tang. 27	D. c.	Cot. 27	Cos. 27	Dif.	'
30	9.66441		9.71648		0.28352	9.94793		30
31	9.66465	24	9.71679	31	0.28321	9.94786	7	29
32	9.66489	24	9.71709	30	0.28291	9.94780	6	28
		24		31			7	
33	9.66513	24	9.71740	31	0.28260	9.94773	6	27
34	9.66537	24	9.71771	31	0.28229	9.94767	7	26
35	9.66562	25	9.71802	31	0.28198	9.94760	7	25
		24		31			7	
36	9.66586	24	9.71833	31	0.28167	9.94753	6	24
37	9.66610	24	9.71863	30	0.28137	9.94747	7	23
38	9.66634	24	9.71894	31	0.28106	9.94740	7	22
		24		31			6	
39	9.66658	24	9.71925	30	0.28075	9.94734		21
40	9.66682	24	9.71955	31	0.28045	9.94727	7	20
41	9.66706	25	9.71986	31	0.28014	9.94720	7	19
		24		31			6	
42	9.66731	24	9.72017	31	0.27983	9.94714		18
43	9.66755	24	9.72048	30	0.27952	9.94707	7	17
44	9.66779	24	9.72078	31	0.27922	9.94700	7	16
		24		31			6	
45	9.66803	24	9.72109	31	0.27891	9.94694		15
46	9.66827	24	9.72140	30	0.27860	9.94687	7	14
47	9.66851	24	9.72170	30	0.27830	9.94680	7	13
		24		31			6	
48	9.66875	24	9.72201	30	0.27799	9.94674		12
49	9.66899	25	9.72231	31	0.27769	9.94667	7	11
50	9.66922	24	9.72262	31	0.27738	9.94660	7	10
		24		31			6	
51	9.66946	24	9.72293	30	0.27707	9.94654		9
52	9.66970	24	9.72323	31	0.27677	9.94647	7	8
53	9.66994	24	9.72354	30	0.27646	9.94640	7	7
		24		30			6	
54	9.67018	24	9.72384	31	0.27616	9.94634		6
55	9.67042	24	9.72415	30	0.27585	9.94627	7	5
56	9.67066	24	9.72445	31	0.27555	9.94620	7	4
		24		31			6	
57	9.67090	23	9.72476	30	0.27524	9.94614		3
58	9.67113	24	9.72506	31	0.27494	9.94607	7	2
59	9.67137	24	9.72537	30	0.27463	9.94600	7	1
60	9.67161		9.72567		0.27433	9.94593	7	0
	Cos. 62		Cot. 62		Tang. 62	Sin. 62		

'	Sin. 28	Dif.	Tang. 28	D.c.	Cot. 28	Cos. 28	Dif.	'
0	9.67161		9.72567		0.27433	9.94593		60
1	9.67185	24	9.72598	31	0.27402	9.94587	6	59
2	9.67208	23	9.72628	30	0.27372	9.94580	7	58
		24		31			7	
3	9.67232	24	9.72659	30	0.27341	9.94573	6	57
4	9.67256	24	9.72689	31	0.27311	9.94567	7	56
5	9.67280	24	9.72720	30	0.27280	9.94560	7	55
		23		30			7	
6	9.67303	24	9.72750	30	0.27250	9.94553	7	54
7	9.67327	23	9.72780	31	0.27220	9.94546	6	53
8	9.67350	24	9.72811	30	0.27189	9.94540	7	52
		24		30			7	
9	9.67374	24	9.72841	31	0.27159	9.94533	7	51
10	9.67398	23	9.72872	30	0.27128	9.94526	7	50
11	9.67421	24	9.72902	30	0.27098	9.94519	6	49
		24		30			6	
12	9.67445	23	9.72932	31	0.27068	9.94513	7	48
13	9.67468	24	9.72963	30	0.27037	9.94506	7	47
14	9.67492	23	9.72993	30	0.27007	9.94499	7	46
		23		30			7	
15	9.67515	24	9.73023	31	0.26977	9.94492	7	45
16	9.67539	23	9.73054	30	0.26946	9.94485	6	44
17	9.67562	24	9.73084	30	0.26916	9.94479	7	43
		24		30			7	
18	9.67586	23	9.73114	30	0.26886	9.94472	7	42
19	9.67609	24	9.73144	31	0.26856	9.94465	7	41
20	9.67633	24	9.73175	30	0.26825	9.94458	7	40
		23		30			7	
21	9.67656	24	9.73205	30	0.26795	9.94451	6	39
22	9.67680	23	9.73235	30	0.26765	9.94445	7	38
23	9.67703	23	9.73265	30	0.26735	9.94438	7	37
		23		30			7	
24	9.67726	24	9.73295	31	0.26705	9.94431	7	36
25	9.67750	23	9.73326	30	0.26674	9.94424	7	35
26	9.67773	23	9.73356	30	0.26644	9.94417	7	34
		23		30			7	
27	9.67796	24	9.73386	30	0.26614	9.94410	6	33
28	9.67820	23	9.73416	30	0.26584	9.94404	7	32
29	9.67843	23	9.73446	30	0.26554	9.94397	7	31
30	9.67866	23	9.73476	30	0.26524	9.94390	7	30
	Cos. 61		Cot. 61		Tang. 61	Sin. 61		

	Sin. 28	Dif.	Lang. 28	D. c.	Cot. 28	Cos. 28	Dif.	
30	9.67806		9.73476	31	0.26524	9.94590		30
31	9.67890	24	9.73507	30	0.26493	9.94583	7	29
32	9.67913	23	9.73537	30	0.26463	9.94576	7	28
		25		30			7	
33	9.67936	23	9.73567	30	0.26433	9.94569	7	27
34	9.67959	23	9.73597	30	0.26403	9.94562	7	26
35	9.67982	24	9.73627	30	0.26373	9.94555	7	25
		23		30			6	
36	9.68006	23	9.73657	30	0.26343	9.94549	7	24
37	9.68029	23	9.73687	30	0.26313	9.94542	7	23
38	9.68052	23	9.73717	30	0.26283	9.94535	7	22
		23		30			7	
39	9.68075	23	9.73747	30	0.26253	9.94528	7	21
40	9.68098	23	9.73777	30	0.26223	9.94521	7	20
41	9.68121	23	9.73807	30	0.26193	9.94514	7	19
		23		30			7	
42	9.68144	23	9.73837	30	0.26163	9.94507	7	18
43	9.68167	23	9.73867	30	0.26133	9.94500	7	17
44	9.68190	23	9.73897	30	0.26103	9.94493	7	16
		23		30			7	
45	9.68213	24	9.73927	30	0.26073	9.94486	7	15
46	9.68237	23	9.73957	30	0.26043	9.94479	7	14
47	9.68260	23	9.73987	30	0.26013	9.94472	6	13
		23		30			7	
48	9.68283	22	9.74017	30	0.25983	9.94466	7	12
49	9.68306	23	9.74047	30	0.25953	9.94459	7	11
50	9.68328	23	9.74077	30	0.25923	9.94452	7	10
		23		30			7	
51	9.68351	23	9.74107	30	0.25893	9.94445	7	9
52	9.68374	23	9.74137	29	0.25863	9.94438	7	8
53	9.68397	23	9.74166	30	0.25834	9.94431	7	7
		23		30			7	
54	9.68420	23	9.74196	30	0.25804	9.94424	7	6
55	9.68443	23	9.74226	30	0.25774	9.94417	7	5
56	9.68466	23	9.74256	30	0.25744	9.94410	7	4
		23		30			7	
57	9.68489	23	9.74286	30	0.25714	9.94403	7	3
58	9.68512	22	9.74316	29	0.25684	9.94396	7	2
59	9.68534	23	9.74345	30	0.25655	9.94389	7	1
60	9.68557	23	9.74375	30	0.25625	9.94382	7	0
	Cos. 61		Cot. 61		Lang. 61	Sin. 61		

	Sin. 29	Dif.	Tang. 29	D. c.	Cot. 29	Cos. 29	Dif.	
0	9.68557	23	9.74375	30	0.25625	9.94182	7	60
1	9.68580	23	9.74405	30	0.25595	9.94175	7	59
2	9.68603	22	9.74435	30	0.25565	9.94168	7	58
3	9.68625	23	9.74465	29	0.25535	9.94161	7	57
4	9.68648	23	9.74494	30	0.25506	9.94154	7	56
5	9.68671	23	9.74524	30	0.25476	9.94147	7	55
6	9.68694	22	9.74554	29	0.25446	9.94140	7	54
7	9.68716	25	9.74583	30	0.25417	9.94133	7	53
8	9.68739	23	9.74613	30	0.25387	9.94126	7	52
9	9.68762	22	9.74643	30	0.25357	9.94119	7	51
10	9.68784	23	9.74673	29	0.25327	9.94112	7	50
11	9.68807	22	9.74702	30	0.25298	9.94105	7	49
12	9.68829	23	9.74732	30	0.25268	9.94098	8	48
13	9.68852	23	9.74762	29	0.25238	9.94090	7	47
14	9.68875	22	9.74791	30	0.25209	9.94083	7	46
15	9.68897	23	9.74821	30	0.25179	9.94076	7	45
16	9.68920	22	9.74851	29	0.25149	9.94069	7	44
17	9.68942	23	9.74880	30	0.25120	9.94062	7	43
18	9.68965	22	9.74910	29	0.25090	9.94055	7	42
19	9.68987	23	9.74939	30	0.25061	9.94048	7	41
20	9.69010	22	9.74969	29	0.25031	9.94041	7	40
21	9.69032	23	9.74998	30	0.25002	9.94034	7	39
22	9.69055	22	9.75028	30	0.24972	9.94027	7	38
23	9.69077	23	9.75058	29	0.24942	9.94020	8	37
24	9.69100	22	9.75087	30	0.24913	9.94012	7	36
25	9.69122	22	9.75117	29	0.24883	9.94005	7	35
26	9.69144	23	9.75146	30	0.24854	9.93998	7	34
27	9.69167	22	9.75176	29	0.24824	9.93991	7	33
28	9.69189	23	9.75205	30	0.24795	9.93984	7	32
29	9.69212	22	9.75235	29	0.24765	9.93977	7	31
30	9.69234	22	9.75264	29	0.24736	9.93970	7	30
	Cos. 60		Cot. 60		Tang. 60	Sin. 60		

	sin. 29	Dif.	Tang. 29	D.c.	Cot. 29	Cos. 29	Dif.	
30	9.69254	22	9.75264	30	0.24736	9.93970	7	30
31	9.69256	23	9.75294	29	0.24706	9.93963	8	29
32	9.69279	22	9.75323	30	0.24677	9.93955	7	28
33	9.69301	22	9.75353	29	0.24647	9.93948	7	27
34	9.69323	22	9.75382	29	0.24618	9.93941	7	26
35	9.69345	23	9.75411	30	0.24589	9.93934	7	25
36	9.69368	22	9.75441	29	0.24559	9.93927	7	24
37	9.69390	22	9.75470	30	0.24530	9.93920	8	23
38	9.69412	22	9.75500	29	0.24500	9.93912	7	22
39	9.69434	22	9.75529	30	0.24471	9.93905	7	21
40	9.69456	23	9.75558	29	0.24442	9.93898	7	20
41	9.69479	22	9.75588	30	0.24412	9.93891	7	19
42	9.69501	22	9.75617	29	0.24383	9.93884	7	18
43	9.69523	22	9.75647	30	0.24353	9.93876	8	17
44	9.69545	22	9.75676	29	0.24324	9.93869	7	16
45	9.69567	22	9.75705	30	0.24295	9.93862	7	15
46	9.69589	22	9.75735	29	0.24265	9.93855	7	14
47	9.69611	22	9.75764	30	0.24236	9.93847	8	13
48	9.69633	22	9.75793	29	0.24207	9.93840	7	12
49	9.69655	22	9.75822	30	0.24178	9.93833	7	11
50	9.69677	22	9.75852	29	0.24148	9.93826	7	10
51	9.69699	22	9.75881	30	0.24119	9.93819	7	9
52	9.69721	22	9.75910	29	0.24090	9.93811	8	8
53	9.69743	22	9.75939	30	0.24061	9.93804	7	7
54	9.69765	22	9.75969	29	0.24031	9.93797	7	6
55	9.69787	22	9.75998	30	0.24002	9.93789	8	5
56	9.69809	22	9.76027	29	0.23973	9.93782	7	4
57	9.69831	22	9.76056	30	0.23944	9.93775	7	3
58	9.69853	22	9.76086	29	0.23914	9.93768	7	2
59	9.69875	22	9.76115	30	0.23885	9.93760	8	1
60	9.69897	22	9.76144	29	0.23856	9.93753	7	0
	Cos. 60	ni2	Cot. 60		Tang. 60	Sin. 60		

'	Sin. 50	Dif.	Tang. 30	D. c.	Cot. 30	Cos. 30	Dif.	'
0	9.69897		9.76144		0.23856	9.93753		60
1	9.69919	22	9.76173	29	0.23827	9.93746	7	59
2	9.69941	22	9.76202	29	0.23798	9.93738	8	58
		22		29			7	
3	9.69963	21	9.76231	30	0.23769	9.93731	7	57
4	9.69984	21	9.76261	29	0.23739	9.93724	7	56
5	9.70006	21	9.76290	29	0.23710	9.93717	7	55
		22		29			8	
6	9.70028	22	9.76319	29	0.23681	9.93709	7	54
7	9.70050	22	9.76348	29	0.23652	9.93702	7	53
8	9.70072	22	9.76377	29	0.23623	9.93695	7	52
		21		29			8	
9	9.70093	22	9.76406	29	0.23594	9.93687	7	51
10	9.70115	22	9.76435	29	0.23565	9.93680	7	50
11	9.70137	22	9.76464	29	0.23536	9.93673	7	49
		22		29			8	
12	9.70159	21	9.76493	29	0.23507	9.93665	7	48
13	9.70180	22	9.76522	29	0.23478	9.93658	7	47
14	9.70202	22	9.76551	29	0.23449	9.93650	8	46
		22		29			7	
15	9.70224	21	9.76580	29	0.23420	9.93643	7	45
16	9.70245	22	9.76609	29	0.23391	9.93636	7	44
17	9.70267	22	9.76639	30	0.23361	9.93628	8	43
		21		29			7	
18	9.70288	22	9.76668	29	0.23332	9.93621	7	42
19	9.70310	22	9.76697	29	0.23303	9.93614	7	41
20	9.70332	22	9.76725	28	0.23275	9.93606	8	40
		21		29			7	
21	9.70353	22	9.76754	29	0.23246	9.93599	7	39
22	9.70375	21	9.76783	29	0.23217	9.93591	8	38
23	9.70396	22	9.76812	29	0.23188	9.93584	7	37
		22		29			7	
24	9.70418	21	9.76841	29	0.23159	9.93577	8	36
25	9.70439	22	9.76870	29	0.23130	9.93569	8	35
26	9.70461	21	9.76899	29	0.23101	9.93562	7	34
		21		29			8	
27	9.70482	22	9.76928	29	0.23072	9.93554	7	33
28	9.70504	22	9.76957	29	0.23043	9.93547	7	32
29	9.70525	21	9.76986	29	0.23014	9.93539	8	31
30	9.70547	22	9.77015	29	0.22985	9.93532	7	30
	Cos. 59		Cot. 59		Tang. 59	Sin. 59		

'	Sin. 30	Dif.	Tang. 30	D.c.	Cot. 30	Cos. 30	Dif.	'
30	9.70547	21	9.77015	29	0.22985	9.93532	7	30
31	9.70568	22	9.77044	29	0.22956	9.93525	8	29
32	9.70590	21	9.77073	28	0.22927	9.93517	7	28
33	9.70611	22	9.77101	29	0.22899	9.93510	8	27
34	9.70635	21	9.77130	29	0.22870	9.93502	7	26
35	9.70654	21	9.77159	29	0.22841	9.93495	8	25
36	9.70675	22	9.77188	29	0.22812	9.93487	7	24
37	9.70697	21	9.77217	29	0.22783	9.93480	8	23
38	9.70718	21	9.77246	28	0.22754	9.93472	7	22
39	9.70739	22	9.77274	29	0.22726	9.93465	8	21
40	9.70761	21	9.77303	29	0.22697	9.93457	7	20
41	9.70782	21	9.77332	29	0.22668	9.93450	8	19
42	9.70805	21	9.77361	29	0.22639	9.93442	7	18
43	9.70824	22	9.77390	28	0.22610	9.93435	8	17
44	9.70846	21	9.77418	29	0.22582	9.93427	7	16
45	9.70867	21	9.77447	29	0.22553	9.93420	8	15
46	9.70888	21	9.77476	29	0.22524	9.93412	7	14
47	9.70909	22	9.77505	28	0.22495	9.93405	8	13
48	9.70931	21	9.77533	29	0.22467	9.93397	7	12
49	9.70952	21	9.77562	29	0.22438	9.93390	8	11
50	9.70973	21	9.77591	28	0.22409	9.93382	7	10
51	9.70994	21	9.77619	29	0.22381	9.93375	8	9
52	9.71015	21	9.77648	29	0.22352	9.93367	7	8
53	9.71030	22	9.77677	29	0.22323	9.93360	8	7
54	9.71058	21	9.77706	28	0.22294	9.93352	7	6
55	9.71079	21	9.77734	29	0.22266	9.93344	8	5
56	9.71100	21	9.77763	28	0.22237	9.93337	7	4
57	9.71121	21	9.77791	29	0.22209	9.93329	8	3
58	9.71142	21	9.77820	29	0.22180	9.93322	7	2
59	9.71163	21	9.77849	28	0.22151	9.93314	8	1
60	9.71184	21	9.77877		0.22125	9.93307	7	0
	Cos. 59		Cot. 59		Tang. 59	Sin. 59		

'	Sin. 31	Dif.	Tang. 31	D.c.	Cot. 31	Cos. 31	Dif.	'
0	9.71184		9.77877		0.22123	9.95307		60
1	9.71205	21	9.77906	29	0.22094	9.95299	8	59
2	9.71226	21	9.77935	29	0.22065	9.95291	8	58
		21		28			7	
3	9.71247		9.77963		0.22037	9.95284		57
4	9.71268	21	9.77992	29	0.22008	9.95276	8	56
5	9.71289	21	9.78020	28	0.21980	9.95269	7	55
		21		29			8	
6	9.71310		9.78049		0.21951	9.95261		54
7	9.71331	21	9.78077	28	0.21923	9.95253	8	53
8	9.71352	21	9.78106	29	0.21894	9.95246	7	52
		21		29			8	
9	9.71373		9.78135		0.21865	9.95238		51
10	9.71393	20	9.78163	28	0.21837	9.95230	8	50
11	9.71414	21	9.78192	29	0.21808	9.95223	7	49
		21		28			8	
12	9.71435		9.78220		0.21780	9.95215		48
13	9.71456	21	9.78249	29	0.21751	9.95207	8	47
14	9.71477	21	9.78277	28	0.21723	9.95200	7	46
		21		29			8	
15	9.71498		9.78306		0.21694	9.95192		45
16	9.71519	21	9.78334	28	0.21666	9.95184	8	44
17	9.71539	20	9.78363	29	0.21637	9.95177	7	43
		21		28			8	
18	9.71560		9.78391		0.21609	9.95169		42
19	9.71581	21	9.78419	28	0.21581	9.95161	8	41
20	9.71602	21	9.78448	29	0.21552	9.95154	7	40
		20		28			8	
21	9.71622		9.78476		0.21524	9.95146		39
22	9.71643	21	9.78505	29	0.21495	9.95138	8	38
23	9.71664	21	9.78533	28	0.21467	9.95131	7	37
		21		29			8	
24	9.71685		9.78562		0.21438	9.95123		36
25	9.71705	20	9.78590	28	0.21410	9.95115	8	35
26	9.71726	21	9.78618	28	0.21382	9.95108	7	34
		21		29			8	
27	9.71747		9.78647		0.21353	9.95100		33
28	9.71767	20	9.78675	28	0.21325	9.95092	8	32
29	9.71788	21	9.78704	29	0.21296	9.95084	8	31
30	9.71809	21	9.78732	28	0.21268	9.95077	7	30
	Cos. 58		Cot. 58		Tang. 58	Sin. 58		

'	Sin. 31	Dif.	Tang. 31	D. c.	Cot. 31	Cos. 31	Dif.	'
30	9.71809	20	9.78732	28	0.21268	9.93077	8	30
31	9.71829	21	9.78760	29	0.21240	9.93069	8	29
32	9.71850	20	9.78789	28	0.21211	9.93061	8	28
33	9.71870	21	9.78817	28	0.21183	9.93053	8	27
34	9.71891	20	9.78845	29	0.21155	9.93046	7	26
35	9.71911	21	9.78874	28	0.21126	9.93038	8	25
36	9.71932	20	9.78902	28	0.21098	9.93030	8	24
37	9.71952	21	9.78930	29	0.21070	9.93022	8	23
38	9.71973	20	9.78959	28	0.21041	9.93014	8	22
39	9.71994	21	9.78987	28	0.21013	9.93007	7	21
40	9.72014	20	9.79015	28	0.20985	9.92999	8	20
41	9.72034	21	9.79043	29	0.20957	9.92991	8	19
42	9.72055	20	9.79072	28	0.20928	9.92983	8	18
43	9.72075	21	9.79100	28	0.20900	9.92976	7	17
44	9.72096	20	9.79128	28	0.20872	9.92968	8	16
45	9.72116	21	9.79156	29	0.20844	9.92960	8	15
46	9.72137	20	9.79185	28	0.20815	9.92952	8	14
47	9.72157	21	9.79213	28	0.20787	9.92944	8	13
48	9.72177	20	9.79241	28	0.20759	9.92936	8	12
49	9.72198	21	9.79269	28	0.20731	9.92929	7	11
50	9.72218	20	9.79297	29	0.20703	9.92921	8	10
51	9.72238	21	9.79326	28	0.20674	9.92913	8	9
52	9.72259	20	9.79354	28	0.20646	9.92905	8	8
53	9.72279	21	9.79382	28	0.20618	9.92897	8	7
54	9.72299	20	9.79410	28	0.20590	9.92889	8	6
55	9.72320	21	9.79438	28	0.20562	9.92881	8	5
56	9.72340	20	9.79466	28	0.20534	9.92874	7	4
57	9.72360	21	9.79495	28	0.20505	9.92866	8	3
58	9.72381	20	9.79523	28	0.20477	9.92858	8	2
59	9.72401	21	9.79551	28	0.20449	9.92850	8	1
60	9.72421	20	9.79579	28	0.20421	9.92842	8	0
	Cos. 58		Cot. 58		Tang. 58	Sin. 58		

'	Sin. 32	Dif.	Tang. 32	D.c.	Cot. 32	Cos. 32	Dif.	'
0	9.72421	20	9.79579	28	0.20421	9.92842	8	60
1	9.72441	20	9.79607	28	0.20393	9.92854	8	59
2	9.72461	21	9.79635	28	0.20365	9.92826	8	58
3	9.72482	20	9.79663	28	0.20337	9.92818	8	57
4	9.72502	20	9.79691	28	0.20309	9.92810	8	56
5	9.72522	20	9.79719	28	0.20281	9.92803	7	55
6	9.72542	20	9.79747	29	0.20253	9.92795	8	54
7	9.72562	20	9.79776	28	0.20224	9.92787	8	53
8	9.72582	20	9.79804	28	0.20196	9.92779	8	52
9	9.72602	20	9.79832	28	0.20168	9.92771	8	51
10	9.72622	21	9.79860	28	0.20140	9.92763	8	50
11	9.72643	20	9.79888	28	0.20112	9.92755	8	49
12	9.72663	20	9.79916	28	0.20084	9.92747	8	48
13	9.72683	20	9.79944	28	0.20056	9.92739	8	47
14	9.72703	20	9.79972	28	0.20028	9.92731	8	46
15	9.72723	20	9.80000	28	0.20000	9.92723	8	45
16	9.72743	20	9.80028	28	0.19972	9.92715	8	44
17	9.72763	20	9.80056	28	0.19944	9.92707	8	43
18	9.72783	20	9.80084	28	0.19916	9.92699	8	42
19	9.72803	20	9.80112	28	0.19888	9.92691	8	41
20	9.72823	20	9.80140	28	0.19860	9.92683	8	40
21	9.72843	20	9.80168	27	0.19832	9.92675	8	39
22	9.72863	20	9.80195	28	0.19805	9.92667	8	38
23	9.72883	19	9.80223	28	0.19777	9.92659	8	37
24	9.72902	20	9.80251	28	0.19749	9.92651	8	36
25	9.72922	20	9.80279	28	0.19721	9.92643	8	35
26	9.72942	20	9.80307	28	0.19693	9.92635	8	34
27	9.72962	20	9.80335	28	0.19665	9.92627	8	33
28	9.72982	20	9.80363	28	0.19637	9.92619	8	32
29	9.73002	20	9.80391	28	0.19609	9.92611	8	31
30	9.73022		9.80419		0.19581	9.92603	8	30
	Cos. 57		Cot. 57		Tang. 57	Sin. 57		

'	Sin. 32	Dif.	Tang. 32	D.c.	Cot. 32	Cos. 32	Dif.	'
30	9.73022	19	9.80419	28	0.19581	9.92603	8	30
31	9.73041	20	9.80447	27	0.19553	9.92596	8	29
32	9.73061	20	9.80474	28	0.19526	9.92587	8	28
33	9.73081	20	9.80502	28	0.19498	9.92579	8	27
34	9.73101	20	9.80530	28	0.19470	9.92571	8	26
35	9.73121	19	9.80558	28	0.19442	9.92563	8	25
36	9.73140	20	9.80586	28	0.19414	9.92555	8	24
37	9.73160	20	9.80614	28	0.19386	9.92546	9	23
38	9.73180	20	9.80642	27	0.19358	9.92538	8	22
39	9.73200	19	9.80669	28	0.19331	9.92530	8	21
40	9.73219	20	9.80697	28	0.19303	9.92522	8	20
41	9.73239	20	9.80725	28	0.19275	9.92514	8	19
42	9.73259	19	9.80753	28	0.19247	9.92506	8	18
43	9.73278	20	9.80781	27	0.19219	9.92498	8	17
44	9.73298	20	9.80808	28	0.19192	9.92490	8	16
45	9.73318	19	9.80836	28	0.19164	9.92482	9	15
46	9.73337	20	9.80864	28	0.19136	9.92473	8	14
47	9.73357	20	9.80892	27	0.19108	9.92465	8	13
48	9.73377	19	9.80919	28	0.19081	9.92457	8	12
49	9.73396	20	9.80947	28	0.19053	9.92449	8	11
50	9.73416	19	9.80975	28	0.19025	9.92441	8	10
51	9.73436	20	9.81003	27	0.18997	9.92433	8	9
52	9.73456	19	9.81030	28	0.18970	9.92425	9	8
53	9.73474	20	9.81058	28	0.18942	9.92416	8	7
54	9.73494	19	9.81086	27	0.18914	9.92408	8	6
55	9.73513	20	9.81113	28	0.18887	9.92400	8	5
56	9.73533	19	9.81141	28	0.18859	9.92392	8	4
57	9.73552	20	9.81169	27	0.18831	9.92384	8	3
58	9.73572	19	9.81196	28	0.18804	9.92376	9	2
59	9.73591	20	9.81224	28	0.18776	9.92367	8	1
60	9.73611		9.81252		0.18748	9.92359		0
	Cos. 57		Cot. 57		Tang. 57	Sin. 57		

'	Sin. 33	Dif.	Tang. 35	D.c.	Cot. 33	Cos. 33	Dif.	'
0	9.73611		9.81252		0.18748	9.92359		60
1	9.73630	19	9.81279	27	0.18721	9.92351	8	59
2	9.73650	20	9.81307	28	0.18695	9.92343	8	58
		19		28			8	
3	9.73669	20	9.81335	27	0.18665	9.92335	9	57
4	9.73689	20	9.81362	27	0.18638	9.92326	9	56
5	9.73708	19	9.81390	28	0.18610	9.92318	8	55
		19		28			8	
6	9.73727	20	9.81418	27	0.18582	9.92310	8	54
7	9.73747	19	9.81445	28	0.18555	9.92302	9	53
8	9.73766	19	9.81473	28	0.18527	9.92293	9	52
		19		27			8	
9	9.73785	20	9.81500	28	0.18500	9.92285	8	51
10	9.73805	19	9.81528	28	0.18472	9.92277	8	50
11	9.73824	19	9.81556	28	0.18444	9.92269	8	49
		19		27			9	
12	9.73843	20	9.81583	28	0.18417	9.92260	8	48
13	9.73863	19	9.81611	28	0.18389	9.92252	8	47
14	9.73882	19	9.81638	27	0.18362	9.92244	8	46
		19		28			9	
15	9.73901	20	9.81666	27	0.18334	9.92235	8	45
16	9.73921	19	9.81693	28	0.18307	9.92227	8	44
17	9.73940	19	9.81721	28	0.18279	9.92219	8	43
		19		27			8	
18	9.73959	19	9.81748	28	0.18252	9.92211	9	42
19	9.73978	19	9.81776	28	0.18224	9.92202	9	41
20	9.73997	19	9.81805	27	0.18197	9.92194	8	40
		20		28			8	
21	9.74017	19	9.81831	27	0.18169	9.92186	8	39
22	9.74036	19	9.81858	27	0.18142	9.92177	9	38
23	9.74055	19	9.81886	28	0.18114	9.92169	8	37
		19		27			8	
24	9.74074	19	9.81913	28	0.18087	9.92161	9	36
25	9.74093	20	9.81941	27	0.18059	9.92152	9	35
26	9.74115	19	9.81968	27	0.18032	9.92144	8	34
		19		28			8	
27	9.74132	19	9.81996	27	0.18004	9.92136	9	33
28	9.74151	19	9.82023	28	0.17977	9.92127	9	32
29	9.74170	19	9.82051	28	0.17949	9.92119	8	31
30	9.74189	19	9.82078	27	0.17922	9.92111	8	30
	Cos. 56		Cot. 56		Tang. 56	Sin. 56		

	Sin. 33	Dif.	Tang. 55	D.c.	Cot. 33	Cos. 35	Dif.	
30	9.74189	19	9.82078	28	0.17922	9.92111	9	30
31	9.74208	19	9.82106	27	0.17894	9.92102	8	29
32	9.74227	19	9.82133	28	0.17867	9.92094	8	28
33	9.74246	19	9.82161	27	0.17839	9.92086	9	27
34	9.74265	19	9.82188	27	0.17812	9.92077	8	26
35	9.74284	19	9.82215	28	0.17785	9.92069	9	25
36	9.74303	19	9.82243	27	0.17747	9.92060	8	24
37	9.74322	19	9.82270	28	0.17730	9.92052	8	23
38	9.74341	19	9.82298	27	0.17702	9.92044	9	22
39	9.74360	19	9.82325	27	0.17675	9.92035	8	21
40	9.74379	19	9.82352	28	0.17648	9.92027	9	20
41	9.74398	19	9.82380	27	0.17620	9.92018	8	19
42	9.74417	19	9.82407	28	0.17593	9.92010	8	18
43	9.74436	19	9.82435	27	0.17565	9.92002	9	17
44	9.74455	19	9.82462	27	0.17538	9.91993	8	16
45	9.74474	19	9.82489	28	0.17511	9.91985	9	15
46	9.74493	19	9.82517	27	0.17483	9.91976	8	14
47	9.74512	19	9.82544	27	0.17456	9.91968	9	13
48	9.74531	18	9.82571	28	0.17429	9.91959	8	12
49	9.74549	19	9.82599	27	0.17401	9.91951	9	11
50	9.74568	19	9.82626	27	0.17374	9.91942	8	10
51	9.74587	19	9.82653	28	0.17347	9.91934	9	9
52	9.74606	19	9.82681	27	0.17319	9.91925	8	8
53	9.74625	19	9.82708	27	0.17292	9.91917	9	7
54	9.74644	18	9.82735	27	0.17265	9.91908	8	6
55	9.74662	19	9.82762	28	0.17238	9.91900	9	5
56	9.74681	19	9.82790	27	0.17210	9.91891	8	4
57	6.74700	19	9.82817	27	0.17183	9.91883	9	3
58	9.74719	18	9.82844	27	0.17156	9.91874	8	2
59	9.74737	19	9.82871	28	0.17129	9.91866	9	1
60	9.74756	19	9.82899	27	0.17101	9.91857	9	0
	Cos. 56		Cot. 56		Tang. 56	Sin. 56		

'	Sin. 34	Dif.	Tang. 34	D.c.	Cot. 34	Cos. 34	Dif.	'
0	9.74756		9.82899		0.17101	9.91857		60
1	9.74775	19	9.82926	27	0.17074	9.91849	8	59
2	9.74794	19	9.82953	27	0.17047	9.91840	9	58
		18		27			8	
3	9.74812		9.82980		0.17020	9.91832		57
4	9.74831	19	9.83008	28	0.16992	9.91823	9	56
5	9.74850	19	9.83035	27	0.16965	9.91815	8	55
		18		27			9	
6	9.74868		9.83062		0.16938	9.91806		54
7	9.74887	19	9.83089	27	0.16911	9.91798	8	53
8	9.74906	19	9.83117	28	0.16883	9.91789	9	52
		18		27			8	
9	9.74924		9.83144		0.16856	9.91781		51
10	9.74943	19	9.83171	27	0.16829	9.91772	9	50
11	9.74961	18	9.83198	27	0.16802	9.91763	9	49
		19		27			8	
12	9.74980		9.83225		0.16775	9.91755		48
13	9.74999	19	9.83252	27	0.16748	9.91746	9	47
14	9.75017	18	9.83280	28	0.16720	9.91738	8	46
		19		27			9	
15	9.75036		9.83307		0.16693	9.91729		45
16	9.75054	18	9.83334	27	0.16666	9.91720	9	44
17	9.75073	19	9.83361	27	0.16639	9.91712	8	43
		18		27			9	
18	9.75091		9.83388		0.16612	9.91703		42
19	9.75110	19	9.83415	27	0.16585	9.91695	8	41
20	9.75128	18	9.83442	27	0.16558	9.91686	9	40
		19		28			9	
21	9.75147		9.83470		0.16530	9.91677		39
22	9.75165	18	9.83497	27	0.16503	9.91669	8	38
23	9.75184	19	9.83524	27	0.16476	9.91660	9	37
		18		27			9	
24	9.75202		9.83551		0.16449	9.91651		36
25	9.75221	19	9.83578	27	0.16422	9.91643	8	35
26	9.75239	18	9.83605	27	0.16395	9.91634	9	34
		19		27			9	
27	9.75258		9.83632		0.16368	9.91625		33
28	9.75276	18	9.83659	27	0.16341	9.91617	8	32
29	9.75294	18	9.83686	27	0.16314	9.91608	9	31
30	9.75313	19	9.83713	27	0.16287	9.91599	9	30
	Cos. 55		Cot. 55		Tang. 55	Sin. 55		

	Sin. 34	Dif.	Tang. 34	D. c.	Cot. 34	Cos. 34	Dif.	
30	9.75313		9.83713		0.16287	9.91599		30
31	9.75331	18	9.83740	27	0.16260	9.91591	8	29
32	9.75350	19	9.83768	38	0.16232	9.91582	9	28
		18		27			9	
33	9.75368		9.83795		0.16205	9.91573		27
34	9.75386	18	9.83822	27	0.16178	9.91565	8	26
35	9.75405	19	9.83849	27	0.16151	9.91556	9	25
		18		27			9	
36	9.75423		9.83876		0.16124	9.91547		24
37	9.75441	18	9.83905	27	0.16097	9.91538	9	23
38	9.75459	18	9.83930	27	0.16070	9.91530	8	22
		19		27			9	
39	9.75478		9.83957		0.16043	9.91521		21
40	9.75496	18	9.83984	27	0.16016	9.91512	9	20
41	9.75514	18	9.84011	27	0.15989	9.91504	8	19
		19		27			9	
42	9.75533		9.84038		0.15962	9.91495		18
43	9.75551	18	9.84065	27	0.15935	9.91486	9	17
44	9.75569	18	9.84092	27	0.15908	9.91477	9	16
		18		27			8	
45	9.75587		9.84119		0.15881	9.91469		15
46	9.75605	18	9.84146	27	0.15854	9.91460	9	14
47	9.75624	19	9.84173	27	0.15827	9.91451	9	13
		18		27			9	
48	9.75642		9.84200		0.15800	9.91442		12
49	9.75660	18	9.84227	27	0.15773	9.91433	9	11
50	9.75678	18	9.84254	27	0.15746	9.91425	8	10
		18		26			9	
51	9.75696		9.84280		0.15720	9.91416		9
52	9.75714	18	9.84307	27	0.15693	9.91407	9	8
53	9.75733	19	9.84334	27	0.15666	9.91398	9	7
		18		27			9	
54	9.75751		9.84361		0.15639	9.91389		6
55	9.75769	18	9.84388	27	0.15612	9.91381	8	5
56	9.75787	18	9.84415	27	0.15585	9.91372	9	4
		18		27			9	
57	9.75805		9.84442		0.15558	9.91363		3
58	9.75823	18	9.84469	27	0.15531	9.91354	9	2
59	9.75841	18	9.84496	27	0.15504	9.91345	9	1
60	9.75859		9.84523		0.15477	9.91336		0
	Cos. 55		Cot. 55		Tang. 55	Sin. 55		

	Sin. 55	Dif.	Tang. 55	D.c.	Cot. 55	Cos. 55	Dif.	
0	9.75859	18	9.84523		0.15477	9.91336		60
1	9.75877	18	9.84550	27	0.15450	9.91328	8	59
2	9.75895	18	9.84576	26	0.15424	9.91319	9	58
		18		27			9	
3	9.75913	18	9.84603		0.15397	9.91310		57
4	9.75931	18	9.84630	27	0.15370	9.91301	9	56
5	9.75949	18	9.84657	27	0.15343	9.91292	9	55
		18		27			9	
6	9.75967	18	9.84684		0.15316	9.91283		54
7	9.75985	18	9.84711	27	0.15289	9.91274	9	53
8	9.76003	18	9.84738	27	0.15262	9.91266	8	52
		18		26			9	
9	9.76021	18	9.84764		0.15236	9.91257		51
10	9.76039	18	9.84791	27	0.15209	9.91248	9	50
11	9.76057	18	9.84818	27	0.15182	9.91239	9	49
		18		27			9	
12	9.76075	18	9.84845		0.15155	9.91230		48
13	9.76093	18	9.84872	27	0.15128	9.91221	9	47
14	9.76111	18	9.84899	27	0.15101	9.91212	9	46
		18		26			9	
15	9.76129	17	9.84925		0.15075	9.91203		45
16	9.76146	18	9.84952	27	0.15048	9.91194	9	44
17	9.76164	18	9.84979	27	0.15021	9.91185	9	43
		18		27			9	
18	9.76182	18	9.85006		0.14994	9.91176		42
19	9.76200	18	9.85033	27	0.14967	9.91167	9	41
20	9.76218	18	9.85059	26	0.14941	9.91158	9	40
		18		27			9	
21	9.76236	17	9.85086		0.14914	9.91149		39
22	9.76253	18	9.85113	27	0.14887	9.91141	8	38
23	9.76271	18	9.85140	27	0.14860	9.91132	9	37
		18		26			9	
24	9.76289	18	9.85166		0.14834	9.91123		36
25	9.76307	18	9.85193	27	0.14807	9.91114	9	35
26	9.76324	17	9.85220	27	0.14780	9.91105	9	34
		18		27			9	
27	9.76342	18	9.85247		0.14753	9.91096		33
28	9.76360	18	9.85273	26	0.14727	9.91087	9	32
29	9.76378	18	9.85300	27	0.14700	9.91078	9	31
30	9.76395	17	9.85327	27	0.14673	9.91069	9	30
	Cos. 54		Cot. 54		Tang. 54	Sin. 54		

	Sin. 35	Dif.	Tang. 35	D. c.	Cot. 35	Cos. 35	Dif.	
30	9.76595		9.85327		0.14673	9.91069		30
31	9.76413	18	9.85354	27	0.14646	9.91060	9	29
32	9.76431	18	9.85380	26	0.14620	9.91051	9	28
		17		27			9	
33	9.76448	18	9.85407	27	0.14595	9.91042	9	27
34	9.76466	18	9.85434	27	0.14566	9.91033	9	26
35	9.76484	18	9.85460	26	0.14540	9.91023	10	25
		17		27			9	
36	9.76501	18	9.85487	27	0.14513	9.91014	9	24
37	9.76519	18	9.85514	27	0.14486	9.91005	9	23
38	9.76537	18	9.85540	26	0.14460	9.90996	9	22
		17		27			9	
39	9.76554	18	9.85567	27	0.14433	9.90987	9	21
40	9.76572	18	9.85594	26	0.14406	9.90978	9	20
41	9.76590	18	9.85620	26	0.14380	9.90969	9	19
		17		27			9	
42	9.76607	18	9.85647	27	0.14353	9.90960	9	18
43	9.76625	17	9.85674	26	0.14326	9.90951	9	17
44	9.76642	18	9.85700	27	0.14300	9.90942	9	16
		18		27			9	
45	9.76660	17	9.85727	27	0.14273	9.90933	9	15
46	9.76677	18	9.85754	26	0.14246	9.90924	9	14
47	9.76695	17	9.85780	27	0.14220	9.90915	9	13
		18		27			9	
48	9.76712	18	9.85807	27	0.14193	9.90906	10	12
49	9.76730	17	9.85834	26	0.14166	9.90896	9	11
50	9.76747	18	9.85860	27	0.14140	9.90887	9	10
		17		26			9	
51	9.76765	18	9.85887	27	0.14113	9.90878	9	9
52	9.76782	18	9.85913	27	0.14087	9.90869	9	8
53	9.76800	17	9.85940	27	0.14060	9.90860	9	7
		18		27			9	
54	9.76817	18	9.85967	26	0.14033	9.90851	9	6
55	9.76835	17	9.85993	27	0.14007	9.90842	9	5
56	9.76852	18	9.86020	26	0.13980	9.90832	10	4
		17		26			9	
57	9.76870	17	9.86046	27	0.13954	9.90823	9	3
58	9.76887	17	9.86073	27	0.13927	9.90814	9	2
59	9.76904	18	9.86100	26	0.13900	9.90805	9	1
60	9.76922		9.86126	26	0.13874	9.90796	9	0
	Cos. 54		Cot. 54		Tang. 54	Sin. 54		

'	Sin. 36	Dif.	Tang.36	D.c.	Cot. 36	Cos. 36	Dif.	'
0	9.76922		9.86126		0.13874	9.90796		60
1	9.76959	17	9.86153	27	0.13847	9.90787	9	59
2	9.76997	18	9.86179	26	0.13821	9.90777	10	58
		17		27			9	
3	9.76974	17	9.86206	26	0.13794	9.90768	9	57
4	9.76991	17	9.86232	26	0.13768	9.90759	9	56
5	9.77009	18	9.86259	27	0.13741	9.90750	9	55
		17		26			9	
6	9.77026	17	9.86285	27	0.13715	9.90741	10	54
7	9.77043	17	9.86312	27	0.13688	9.90731	9	53
8	9.77061	18	9.86338	26	0.13662	9.90722	9	52
		17		27			9	
9	9.77078	17	9.86365	27	0.13635	9.90713	9	51
10	9.77095	17	9.86392	27	0.13608	9.90704	10	50
11	9.77112	17	9.86418	26	0.13582	9.90694	9	49
		18		27			9	
12	9.77130	17	9.86445	26	0.13555	9.90685	9	48
13	9.77147	17	9.86471	27	0.13529	9.90676	9	47
14	9.77164	17	9.86498	27	0.13502	9.90667	9	46
		17		26			10	
15	9.77181	18	9.86524	27	0.13476	9.90657	9	45
16	9.77199	17	9.86551	26	0.13449	9.90648	9	44
17	9.77216	17	9.86577	26	0.13423	9.90639	9	43
		17		26			9	
18	9.77233	17	9.86603	27	0.13397	9.90630	10	42
19	9.77250	17	9.86630	26	0.13370	9.90620	9	41
20	9.77268	18	9.86656	26	0.13344	9.90611	9	40
		17		27			9	
21	9.77285	17	9.86683	26	0.13317	9.90602	10	39
22	9.77302	17	9.86709	27	0.13291	9.90592	9	38
23	9.77319	17	9.86736	26	0.13264	9.90583	9	37
		17		26			9	
24	9.77336	17	9.86762	27	0.13238	9.90574	9	36
25	9.77353	17	9.86789	26	0.13211	9.90565	9	35
26	9.77370	17	9.86815	26	0.13185	9.90555	10	34
		17		27			9	
27	9.77387	18	9.86842	26	0.13158	9.90546	9	33
28	9.77405	17	9.86868	26	0.13132	9.90537	9	32
29	9.77422	17	9.86894	26	0.13106	9.90527	10	31
30	9.77439	17	9.86921	27	0.13079	9.90518	9	30
	Cos. 53		Cot. 53		Tang. 53	Sin. 53		

'	Sin. 36	Dif.	Tang. 36	D.c.	Cot. 36	Cos. 36	Dif.	'
30	9.77439		9.86921	26	0.13079	9.90518		30
31	9.77456	17	9.86947	26	0.13053	9.90509	9	29
32	9.77473	17	9.86974	27	0.13026	9.90499	10	28
		17		26			9	
33	9.77490	17	9.87000	27	0.13000	9.90490	10	27
34	9.77507	17	9.87027	26	0.12973	9.90480	9	26
35	9.77524	17	9.87053	26	0.12947	9.90471	9	25
		17		26			9	
36	9.77541	17	9.87079	27	0.12921	9.90462	10	24
37	9.77558	17	9.87106	26	0.12894	9.90452	9	23
38	9.77575	17	9.87132	26	0.12868	9.90443	9	22
		17		26			9	
39	9.77592	17	9.87158	27	0.12842	9.90434	10	21
40	9.77609	17	9.87185	26	0.12815	9.90424	9	20
41	9.77626	17	9.87211	26	0.12789	9.90415	10	19
		17		27			9	
42	9.77643	17	9.87238	26	0.12762	9.90405	9	18
43	9.77660	17	9.87264	26	0.12736	9.90396	10	17
44	9.77677	17	9.87290	26	0.12710	9.90386	9	16
		17		27			10	
45	9.77694	17	9.87317	26	0.12683	9.90377	9	15
46	9.77711	17	9.87343	26	0.12657	9.90368	9	14
47	9.77728	17	9.87369	26	0.12631	9.90358	10	13
		16		27			9	
48	9.77744	17	9.87396	26	0.12604	9.90349	10	12
49	9.77761	17	9.87422	26	0.12578	9.90339	9	11
50	9.77778	17	9.87448	26	0.12552	9.90330	9	10
		17		27			10	
51	9.77795	17	9.87475	26	0.12525	9.90320	9	9
52	9.77812	17	9.87501	26	0.12499	9.90311	9	8
53	9.77829	17	9.87527	26	0.12473	9.90301	10	7
		17		27			9	
54	9.77846	16	9.87554	26	0.12446	9.90292	10	6
55	9.77862	17	9.87580	26	0.12420	9.90282	9	5
56	9.77879	17	9.87606	26	0.12394	9.90273	10	4
		17		27			9	
57	6.77896	17	9.87633	26	0.12367	9.90263	10	3
58	9.77913	17	9.87659	26	0.12341	9.90254	9	2
59	9.77930	17	9.87685	26	0.12315	9.90244	10	1
60	9.77946	16	9.87711	26	0.12289	9.90235	9	0
	Cos. 53		Cot. 53		Tang. 53	Sin. 53		

°	Sin. 37	Dif.	Tang. 57	D.c.	Cot. 37	Cos. 37	Dif.	'
0	9.77946		9.87711		0.12289	9.90255		60
1	9.77963	17	9.87738	27	0.12262	9.90225	10	59
2	9.77980	17	9.87764	26	0.12236	9.90216	9	58
3	9.77997	17	9.87790	26	0.12210	9.90206	10	57
4	9.78013	16	9.87817	27	0.12185	9.90197	9	56
5	9.78030	17	9.87843	26	0.12157	9.90187	10	55
6	9.78047	17	9.87869	26	0.12131	9.90178	9	54
7	9.78063	16	9.87895	26	0.12105	9.90168	10	53
8	9.78080	17	9.87922	27	0.12078	9.90159	9	52
9	9.78097	17	9.87948	26	0.12052	9.90149	10	51
10	9.78113	16	9.87974	26	0.12026	9.90139	10	50
11	9.78130	17	9.88000	26	0.12000	9.90130	9	49
12	9.78147	17	9.88027	27	0.11973	9.90120	10	48
13	9.78163	16	9.88053	26	0.11947	9.90111	9	47
14	9.78180	17	9.88079	26	0.11921	9.90101	10	46
15	9.78197	17	9.88105	26	0.11895	9.90091	10	45
16	9.78213	16	9.88131	26	0.11869	9.90082	9	44
17	9.78230	17	9.88158	27	0.11842	9.90072	10	43
18	9.78246	16	9.88184	26	0.11816	9.90063	9	42
19	9.78263	17	9.88210	26	0.11790	9.90053	10	41
20	9.78280	17	9.88236	26	0.11764	9.90043	10	40
21	9.78296	16	9.88262	26	0.11738	9.90034	9	39
22	9.78313	17	9.88289	27	0.11711	9.90024	10	38
23	9.78329	16	9.88315	26	0.11685	9.90014	10	37
24	9.78346	17	9.88341	26	0.11659	9.90005	9	36
25	9.78362	16	9.88367	26	0.11633	9.89995	10	35
26	9.78379	17	9.88393	26	0.11607	9.89985	10	34
27	9.78395	16	9.88420	27	0.11580	9.89976	9	33
28	9.78412	17	9.88446	26	0.11554	9.89966	10	32
29	9.78428	16	9.88472	26	0.11528	9.89956	10	31
30	9.78445	17	9.88498	26	0.11502	9.89947	9	30
	Cos. 52		Cot. 52		Tang. 52	Sin. 52		

'	Sin. 57	Dif.	Tang. 37	D.c.	Cot. 37	Cos. 37	Dif.	'
30	9.78445	16	9.88498	26	0.11502	9.89947		30
31	9.78461	17	9.88524	26	0.11476	9.89957	10	29
32	9.78478	16	9.88550	27	0.11450	9.89927	10	28
33	9.78494	16	9.88577	26	0.11423	9.89918	9	27
34	9.78510	17	9.88603	26	0.11397	9.89908	10	26
35	9.78527	16	9.88629	26	0.11371	9.89898	10	25
36	9.78543	17	9.88655	26	0.11345	9.89888	10	24
37	9.78560	16	9.88681	26	0.11319	9.89879	9	23
38	9.78576	16	9.88707	26	0.11293	9.89869	10	22
39	9.78592	17	9.88733	26	0.11267	9.89859	10	21
40	9.78609	16	9.88759	27	0.11241	9.89849	9	20
41	9.78625	17	9.88786	26	0.11214	9.89840	10	19
42	9.78642	16	9.88812	26	0.11188	9.89830	10	18
43	9.78658	16	9.88838	26	0.11162	9.89820	10	17
44	9.78674	17	9.88864	26	0.11136	9.89810	9	16
45	9.78691	16	9.88890	26	0.11110	9.89801	10	15
46	9.78707	16	9.88916	26	0.11084	9.89791	10	14
47	9.78723	16	9.88942	26	0.11058	9.89781	10	13
48	9.78739	17	9.88968	26	0.11032	9.89771	10	12
49	9.78756	16	9.88994	26	0.11006	9.89761	10	11
50	9.78772	16	9.89020	26	0.10980	9.89752	9	10
51	9.78788	17	9.89046	27	0.10954	9.89742	10	9
52	9.78805	16	9.89073	26	0.10927	9.89732	10	8
53	9.78821	16	9.89099	26	0.10901	9.89722	10	7
54	9.78837	16	9.89125	26	0.10875	9.89712	10	6
55	9.78853	16	9.89151	26	0.10849	9.89702	10	5
56	9.78869	17	9.89177	26	0.10823	9.89693	9	4
57	9.78886	16	9.89203	26	0.10797	9.89683	10	3
58	9.78902	16	9.89229	26	0.10771	9.89673	10	2
59	9.78918	16	9.89255	26	0.10745	9.89663	10	1
60	9.78934	16	9.89281	26	0.10719	9.89653	10	0
	Cos. 52		Cot. 52		Tang. 52	Sin. 52		

'	Sin. 38	Dif.	Tang. 38	D.c.	Cot. 38	Cos. 38	Dif.	'
0	9.78954	16	9.89281	26	0.10719	9.89653	10	60
1	9.78950	17	9.89307	26	0.10693	9.89643	10	59
2	9.78967	16	9.89335	26	0.10667	9.89633	10	58
3	9.78983	16	9.89359	26	0.10641	9.89624	9	57
4	9.78999	16	9.89385	26	0.10615	9.89614	10	56
5	9.79015	16	9.89411	26	0.10589	9.89604	10	55
6	9.79031	16	9.89437	26	0.10563	9.89594	10	54
7	9.79047	16	9.89463	26	0.10537	9.89584	10	53
8	9.79063	16	9.89489	26	0.10511	9.89574	10	52
9	9.79079	16	9.89515	26	0.10485	9.89564	10	51
10	9.79095	16	9.89541	26	0.10459	9.89554	10	50
11	9.79111	17	9.89567	26	0.10433	9.89544	10	49
12	9.79128	16	9.89593	26	0.10407	9.89534	10	48
13	9.79144	16	9.89619	26	0.10381	9.89524	10	47
14	9.79160	16	9.89645	26	0.10355	9.89514	10	46
15	9.79176	16	9.89671	26	0.10329	9.89504	9	45
16	9.79192	16	9.89697	26	0.10303	9.89495	10	44
17	9.79208	16	9.89723	26	0.10277	9.89485	10	43
18	9.79224	16	9.89749	26	0.10251	9.89475	10	42
19	9.79240	16	9.89775	26	0.10225	9.89465	10	41
20	9.79256	16	9.89801	26	0.10199	9.89455	10	40
21	9.79272	16	9.89827	26	0.10173	9.89445	10	39
22	9.79288	16	9.89853	26	0.10147	9.89435	10	38
23	9.79304	15	9.89879	26	0.10121	9.89425	10	37
24	9.79319	16	9.89905	26	0.10095	9.89415	10	36
25	9.79335	16	9.89931	26	0.10069	9.89405	10	35
26	9.79351	16	9.89957	26	0.10043	9.89395	10	34
27	9.79367	16	9.89983	26	0.10017	9.89385	10	33
28	9.79383	16	9.90009	26	0.09991	9.89375	11	32
29	9.79399	16	9.90035	26	0.09965	9.89364	10	31
30	9.79415	16	9.90061	26	0.09939	9.89354	10	30
	Cos. 51		Cot. 51		Tang. 51	Sin. 51		

'	Sin. 38	Dif.	Tang. 38	D. c.	Cot. 38	Cos. 38	Dif.	'
30	9.79415	16	9.90061	25	0.09939	9.89354	10	30
31	9.79431	16	9.90086	26	0.09914	9.89344	10	29
32	9.79447	16	9.90112	26	0.09888	9.89334	10	28
33	9.79463	15	9.90138	26	0.09862	9.89324	10	27
34	9.79478	16	9.90164	26	0.09836	9.89314	10	26
35	9.79494	16	9.90190	26	0.09810	9.89304	10	25
36	9.79510	16	9.90216	26	0.09784	9.89294	10	24
37	9.79526	16	9.90242	26	0.09758	9.89284	10	23
38	9.79542	16	9.90268	26	0.09732	9.89274	10	22
39	9.79558	15	9.90294	26	0.09706	9.89264	10	21
40	9.79573	16	9.90320	26	0.09680	9.89254	10	20
41	9.79589	16	9.90346	25	0.09654	9.89244	10	19
42	9.79605	16	9.90371	26	0.09629	9.89233	10	18
43	9.79621	15	9.90397	26	0.09603	9.89223	10	17
44	9.79636	16	9.90423	26	0.09577	9.89213	10	16
45	9.79652	16	9.90449	26	0.09551	9.89203	10	15
46	9.79668	16	9.90475	26	0.09525	9.89193	10	14
47	9.79684	15	9.90501	26	0.09499	9.89183	10	13
48	9.79699	16	9.90527	26	0.09473	9.89173	10	12
49	9.79715	16	9.90553	25	0.09447	9.89162	10	11
50	9.79731	15	9.90578	26	0.09422	9.89152	10	10
51	9.79746	16	9.90604	26	0.09396	9.89142	10	9
52	9.79762	16	9.90630	26	0.09370	9.89132	10	8
53	9.79778	15	9.90656	26	0.09344	9.89122	10	7
54	9.79793	16	9.90682	26	0.09318	9.89112	10	6
55	9.79809	16	9.90708	26	0.09292	9.89101	10	5
56	9.79825	15	9.90734	25	0.09266	9.89091	10	4
57	9.79840	16	9.90759	26	0.09241	9.89081	10	3
58	9.79856	16	9.90785	26	0.09215	9.89071	10	2
59	9.79872	15	9.90811	26	0.09189	9.89060	10	1
60	9.79887	15	9.90837	26	0.09163	9.89050	10	0
	Cos. 51		Cot. 51		Tang. 51	Sin. 51		

'	Sin. 39	Dif.	Tang. 39	D.c.	Cot. 39	Cos. 39	Dif.	'
0	9.79887	16	9.90837	26	0.09163	9.89050	10	60
1	9.79903	15	9.90863	26	0.09137	9.89040	10	59
2	9.79918	16	9.90889	25	0.09111	9.89030	10	58
3	9.79934	16	9.90914	26	0.09086	9.89020	11	57
4	9.79950	15	9.90940	26	0.09060	9.89009	10	56
5	9.79965	16	9.90966	26	0.09034	9.88999	10	55
6	9.79981	15	9.90992	26	0.09008	9.88989	11	54
7	9.79996	16	9.91018	25	0.08982	9.88978	10	53
8	9.80012	15	9.91043	26	0.08957	9.88968	10	52
9	9.80027	16	9.91069	26	0.08931	9.88958	10	51
10	9.80043	15	9.91095	26	0.08905	9.88948	11	50
11	9.80058	16	9.91121	26	0.08879	9.88937	10	49
12	9.80074	15	9.91147	25	0.08853	9.88927	10	48
13	9.80089	16	9.91172	26	0.08828	9.88917	11	47
14	9.80105	15	9.91198	26	0.08802	9.88906	10	46
15	9.80120	16	9.91224	26	0.08776	9.88896	10	45
16	9.80136	15	9.91250	26	0.08750	9.88886	11	44
17	9.80151	15	9.91276	25	0.08724	9.88875	10	43
18	9.80166	16	9.91301	26	0.08699	9.88865	10	42
19	9.80182	15	9.91327	26	0.08673	9.88855	11	41
20	9.80197	16	9.91353	26	0.08647	9.88844	10	40
21	9.80213	15	9.91379	25	0.08621	9.88834	10	39
22	9.80228	16	9.91404	26	0.08596	9.88824	11	38
23	9.80244	15	9.91430	26	0.08570	9.88813	10	37
24	9.80259	15	9.91456	26	0.08544	9.88803	10	36
25	9.80274	16	9.91482	25	0.08518	9.88793	11	35
26	9.80290	15	9.91507	26	0.08493	9.88782	10	34
27	9.80305	15	9.91533	26	0.08467	9.88772	11	33
28	9.80320	16	9.91559	26	0.08441	9.88761	10	32
29	9.80336	15	9.91585	25	0.08415	9.88751	10	31
30	9.80351	15	9.91610	25	0.08390	9.88741	10	30
	Cos. 50		Cot. 50		Tang. 50	Sin. 50		

	Sin. 39	Dif.	Tang. 39	D. c.	Cot. 39	Cos. 39	Dif.	
30	9.80351	15	9.91610	26	0.08390	9.88741		30
31	9.80366	16	9.91636	26	0.08364	9.88730	11	29
32	9.80382	15	9.91662	26	0.08338	9.88720	10	28
							11	
33	9.80397	15	9.91688	25	0.08312	9.88709	10	27
34	9.80412	16	9.91713	26	0.08287	9.88699	11	26
35	9.80428	15	9.91739	26	0.08261	9.88688	10	25
							11	
36	9.80443	15	9.91765	26	0.08235	9.88678	10	24
37	9.80458	15	9.91791	25	0.08209	9.88668	11	23
38	9.80473	16	9.91816	26	0.08184	9.88657	10	22
							11	
39	9.80489	15	9.91842	26	0.08158	9.88647	10	21
40	9.80504	15	9.91868	25	0.08132	9.88636	11	20
41	9.80519	15	9.91893	26	0.08107	9.88626	10	19
							11	
42	9.80534	16	9.91919	26	0.08081	9.88615	10	18
43	9.80550	15	9.91945	26	0.08055	9.88605	11	17
44	9.80565	15	9.91971	25	0.08029	9.88594	10	16
							11	
45	9.80580	15	9.91996	26	0.08004	9.88584	10	15
46	9.80595	15	9.92022	26	0.07978	9.88573	11	14
47	9.80610	15	9.92048	25	0.07952	9.88563	10	13
							11	
48	9.80625	16	9.92075	26	0.07927	9.88552	10	12
49	9.80641	15	9.92099	26	0.07901	9.88542	11	11
50	9.80656	15	9.92125	25	0.07875	9.88531	10	10
							11	
51	9.80671	15	9.92150	26	0.07850	9.88521	10	9
52	9.80686	15	9.92176	26	0.07824	9.88510	11	8
53	9.80701	15	9.92202	26	0.07798	9.88499	10	7
							11	
54	9.80716	16	9.92227	25	0.07773	9.88489	10	6
55	9.80731	15	9.92253	26	0.07747	9.88478	11	5
56	9.80746	15	9.92279	26	0.07721	9.88468	10	4
							11	
57	9.80762	15	9.92304	26	0.07696	9.88457	10	3
58	9.80777	15	9.92330	26	0.07670	9.88447	11	2
59	9.80792	15	9.92356	25	0.07644	9.88436	10	1
60	9.80807	15	9.92381	25	0.07619	9.88425	11	0
	Cos. 50		Cot. 50		Tang. 50	Sin. 50		

'	Sin. 40	Dif.	Tang. 40	D.c.	Cot. 40	Cos. 40	Dif.	'
0	9.80807	15	9.92381	26	0.07619	9.88425	10	60
1	9.80822	15	9.92407	26	0.07593	9.88415	11	59
2	9.80837	15	9.92433	25	0.07567	9.88404	10	58
3	9.80852	15	9.92458	26	0.07542	9.88394	11	57
4	9.80867	15	9.92484	26	0.07516	9.88383	11	56
5	9.80882	15	9.92510	25	0.07490	9.88372	10	55
6	9.80897	15	9.92535	26	0.07465	9.88362	11	54
7	9.80912	15	9.92561	26	0.07439	9.88351	11	53
8	9.80927	15	9.92587	25	0.07413	9.88340	10	52
9	9.80942	15	9.92612	26	0.07388	9.88330	11	51
10	9.80957	15	9.92638	25	0.07362	9.88319	11	50
11	9.80972	15	9.92663	26	0.07337	9.88308	10	49
12	9.80987	15	9.92689	26	0.07311	9.88298	11	48
13	9.81002	15	9.92715	25	0.07285	9.88287	11	47
14	9.81017	15	9.92740	26	0.07260	9.88276	10	46
15	9.81032	15	9.92766	26	0.07234	9.88266	11	45
16	9.81047	14	9.92792	25	0.07208	9.88255	11	44
17	9.81061	15	9.92817	26	0.07183	9.88244	10	43
18	9.81076	15	9.92843	25	0.07157	9.88234	11	42
19	9.81091	15	9.92868	26	0.07132	9.88223	11	41
20	9.81106	15	9.92894	26	0.07106	9.88212	11	40
21	9.81121	15	9.92920	25	0.07080	9.88201	10	39
22	9.81136	15	9.92945	26	0.07055	9.88191	11	38
23	9.81151	15	9.92971	25	0.07029	9.88180	11	37
24	9.81166	14	9.92996	26	0.07004	9.88169	11	36
25	9.81180	15	9.93022	26	0.06978	9.88158	10	35
26	9.81195	15	9.93048	25	0.06952	9.88148	11	34
27	9.81210	15	9.93073	26	0.06927	9.88137	11	33
28	9.81225	15	9.93099	25	0.06901	9.88126	11	32
29	9.81240	14	9.93124	26	0.06876	9.88115	10	31
30	9.81254	14	9.93150	26	0.06850	9.88105	10	30
	Cos. 49		Cot. 49		Tang. 49	Sin. 49		

'	Sin. 40	Dif.	Tang. 40	D.c.	Cot. 40	Cos. 37	Dif.	'
30	9.81254		9.95150		0.06850	9.88105		30
31	9.81269	15	9.95175	25	0.06825	9.88094	11	29
32	9.81284	15	9.95201	26	0.06799	9.88083	11	28
		15		26			11	
33	9.81299	15	9.95227	25	0.06773	9.88072	11	27
34	9.81314	15	9.95252	25	0.06748	9.88061	11	26
35	9.81328	14	9.95278	26	0.06722	9.88051	10	25
		15		25			11	
36	9.81343	15	9.95303	26	0.06697	9.88040	11	24
37	9.81358	15	9.95329	25	0.06671	9.88029	11	23
38	9.81372	14	9.95354	25	0.06646	9.88018	11	22
		15		26			11	
39	9.81387	15	9.95380	26	0.06620	9.88007	11	21
40	9.81402	15	9.95406	25	0.06594	9.87996	11	20
41	9.81417	15	9.95431	25	0.06569	9.87985	11	19
		14		26			10	
42	9.81431	15	9.95457	25	0.06543	9.87975	11	18
43	9.81446	15	9.95482	26	0.06518	9.87964	11	17
44	9.81461	15	9.95508	26	0.06492	9.87953	11	16
		14		25			11	
45	9.81475	15	9.95533	26	0.06467	9.87942	11	15
46	9.81490	15	9.95559	25	0.06441	9.87931	11	14
47	9.81505	15	9.95584	25	0.06416	9.87920	11	13
		14		26			11	
48	9.81519	15	9.95610	26	0.06390	9.87909	11	12
49	9.81534	15	9.95636	26	0.06364	9.87898	11	11
50	9.81549	15	9.95661	25	0.06339	9.87887	11	10
		14		26			10	
51	9.81563	15	9.95687	25	0.06313	9.87877	11	9
52	9.81578	15	9.95712	25	0.06288	9.87866	11	8
53	9.81592	14	9.95738	26	0.06262	9.87855	11	7
		15		25			11	
54	9.81607	15	9.95763	26	0.06237	9.87844	11	6
55	9.81622	15	9.95789	26	0.06211	9.87833	11	5
56	9.81636	14	9.95814	25	0.06186	9.87822	11	4
		15		26			11	
57	9.81651	14	9.95840	25	0.06160	9.87811	11	3
58	9.81665	15	9.95865	26	0.06135	9.87800	11	2
59	9.81680	15	9.95891	26	0.06109	9.87789	11	1
60	9.81694	14	9.95916	25	0.06084	9.87778	11	0
	Cos. 49		Cot. 49		Tang. 49	Sin. 49		

'	Sin. 41	Dif.	Fang. 41	D.c.	Cot. 41	Cos. 41	Dif.	'
0	9.81694	15	9.93916	26	0.06084	9.87778	11	60
1	9.81709	14	9.93942	25	0.06058	9.87767	11	59
2	9.81723	15	9.93967	26	0.06033	9.87756	11	58
3	9.81738	14	9.93993	25	0.06007	9.87745	11	57
4	9.81752	15	9.94018	26	0.05982	9.87734	11	56
5	9.81767	14	9.94044	25	0.05956	9.87723	11	55
6	9.81781	15	9.94069	26	0.05931	9.87712	11	54
7	9.81796	14	9.94095	25	0.05905	9.87701	11	53
8	9.81810	15	9.94120	26	0.05880	9.87690	11	52
9	9.81825	14	9.94146	25	0.05854	9.87679	11	51
10	9.81839	15	9.94171	26	0.05829	9.87668	11	50
11	9.81854	14	9.94197	25	0.05803	9.87657	11	49
12	9.81868	15	9.94222	26	0.05778	9.87646	11	48
13	9.81882	14	9.94248	25	0.05752	9.87635	11	47
14	9.81897	15	9.94273	26	0.05727	9.87624	11	46
15	9.81911	14	9.94299	25	0.05701	9.87613	12	45
16	9.81926	15	9.94324	26	0.05676	9.87601	11	44
17	9.81940	14	9.94350	25	0.05650	9.87590	11	43
18	9.81955	15	9.94375	26	0.05625	9.87579	11	42
19	9.81969	14	9.94401	25	0.05599	9.87568	11	41
20	9.81983	15	9.94426	26	0.05574	9.87557	11	40
21	9.81998	14	9.94452	25	0.05548	9.87546	11	39
22	9.82012	15	9.94477	26	0.05523	9.87535	11	38
23	9.82026	14	9.94503	25	0.05497	9.87524	11	37
24	9.82041	15	9.94528	26	0.05472	9.87513	12	36
25	9.82055	14	9.94554	25	0.05446	9.87501	11	35
26	9.82069	15	9.94579	26	0.05421	9.87490	11	34
27	9.82084	14	9.94604	25	0.05396	9.87479	11	33
28	9.82098	15	9.94630	26	0.05370	9.87468	11	32
29	9.82112	14	9.94655	25	0.05345	9.87457	11	31
30	9.82126	14	9.94681	26	0.05319	9.87446	11	30
	Cos. 48		Cot. 48		Fang. 48	Sin. 48		

	Sin. 41	Dif.	Tang. 41	D.c.	Cot. 36	Cos. 41	Dif.	
30	9.82126	15	9.94681	25	0.05319	9.87446	12	30
31	9.82141	14	9.94706	26	0.05291	9.87434	11	29
32	9.82155	14	9.94732	25	0.05268	9.87423	11	28
33	9.82169	15	9.94757	26	0.05243	9.87412	11	27
34	9.82184	14	9.94783	25	0.05217	9.87401	11	26
35	9.82198	14	9.94808	26	0.05192	9.87390	12	25
36	9.82212	14	9.94834	25	0.05166	9.87378	11	24
37	9.82226	14	9.94859	25	0.05141	9.87367	11	23
38	9.82240	15	9.94884	26	0.05116	9.87356	11	22
39	9.82255	14	9.94910	25	0.05090	9.87345	11	21
40	9.82269	14	9.94935	26	0.05065	9.87334	12	20
41	9.82283	14	9.94961	25	0.05039	9.87322	11	19
42	9.82297	14	9.94986	26	0.05014	9.87311	11	18
43	9.82311	15	9.95012	25	0.04988	9.87300	12	17
44	9.82326	14	9.95037	26	0.04963	9.87288	11	16
45	9.82340	14	9.95062	25	0.04938	9.87277	11	15
46	9.82354	14	9.95088	26	0.04912	9.87266	11	14
47	9.82368	14	9.95113	25	0.04887	9.87255	12	13
48	9.82382	14	9.95139	26	0.04861	9.87243	11	12
49	9.82396	14	9.95164	25	0.04836	9.87232	11	11
50	9.82410	14	9.95190	26	0.04810	9.87221	12	10
51	9.82424	15	9.95215	25	0.04785	9.87209	11	9
52	9.82439	14	9.95240	26	0.04760	9.87198	11	8
53	9.82453	14	9.95266	25	0.04734	9.87187	12	7
54	9.82467	14	9.95291	26	0.04709	9.87175	11	6
55	9.82481	14	9.95317	25	0.04683	9.87164	11	5
56	9.82495	14	9.95342	26	0.04658	9.87153	12	4
57	9.82509	14	9.95368	25	0.04632	9.87141	11	3
58	9.82523	14	9.95393	25	0.04607	9.87130	11	2
59	9.82537	14	9.95418	26	0.04582	9.87119	12	1
60	9.82551	14	9.95444	26	0.04556	9.87107	12	0
	Cos. 48		Cot. 48		Tang. 48	Sin. 48		

'	Sin. 42	Dif.	Tang. 42	D. c.	Cot. 42	Cos. 42	Dif.	'
0	9.82551		9.95444		0.04556	9.87107		60
1	9.82565	14	9.95469	25	0.04551	9.87096	11	59
2	9.82579	14	9.95495	26	0.04505	9.87085	11	58
		14		25			12	
3	9.82593	14	9.95520	25	0.04480	9.87073	11	57
4	9.82607	14	9.95545	25	0.04455	9.87062	12	56
5	9.82621	14	9.95571	26	0.04429	9.87050	12	55
		14		25			11	
6	9.82635	14	9.95596	26	0.04404	9.87039	11	54
7	9.82649	14	9.95622	25	0.04378	9.87028	12	53
8	9.82663	14	9.95647	25	0.04353	9.87016	12	52
		14		25			11	
9	9.82677	14	9.95672	26	0.04328	9.87005	12	51
10	9.82691	14	9.95698	25	0.04302	9.86993	11	50
11	9.82705	14	9.95723	25	0.04277	9.86982	12	49
		14		25			12	
12	9.82719	14	9.95748	26	0.04252	9.86970	11	48
13	9.82733	14	9.95774	25	0.04226	9.86959	12	47
14	9.82747	14	9.95799	25	0.04201	9.86947	12	46
		14		26			11	
15	9.82761	14	9.95825	25	0.04175	9.86936	12	45
16	9.82775	13	9.95850	25	0.04150	9.86924	11	44
17	9.82788	14	9.95875	26	0.04125	9.86913	11	43
		14		26			11	
18	9.82802	14	9.95901	25	0.04099	9.86902	12	42
19	9.82816	14	9.95926	26	0.04074	9.86890	11	41
20	9.82830	14	9.95952	25	0.04048	9.86879	12	40
		14		25			12	
21	9.82844	14	9.95977	25	0.04023	9.86867	12	39
22	9.82858	14	9.96002	26	0.03998	9.86855	11	38
23	9.82872	13	9.96028	25	0.03972	9.86844	11	37
		14		25			12	
24	9.82885	14	9.96053	25	0.03947	9.86832	11	36
25	9.82899	14	9.96078	26	0.03922	9.86821	11	35
26	9.82913	14	9.96104	25	0.03896	9.86809	12	34
		14		25			11	
27	9.82927	14	9.96129	26	0.03871	9.86798	12	33
28	9.82941	14	9.96155	25	0.03845	9.86786	12	32
29	9.82955	14	9.96180	25	0.03820	9.86775	12	31
30	9.82968	13	9.96205	25	0.03795	9.86763	12	30
		14						
	Cos. 47		Cot. 47		Tang. 47	Sin. 47		

'	Sin. 42	Dif.	Tang. 42	D. c.	Cot. 42	Cos. 42	Dif.	'
30	9.82968		9.96205		0.03795	9.86763		30
31	9.82982	14	9.96231	26	0.03769	9.86752	11	29
32	9.82996	14	9.96256	25	0.03744	9.86740	12	28
		14		25			12	
33	9.83010	13	9.96281	26	0.03719	9.86728	11	27
34	9.83023	14	9.96307	25	0.03693	9.86717	12	26
35	9.83037	14	9.96332	25	0.03668	9.86705	11	25
		14		25			11	
36	9.83051	14	9.96357	26	0.03643	9.86694	12	24
37	9.83065	13	9.96383	25	0.03617	9.86682	12	23
38	9.83078	14	9.96408	25	0.03592	9.86670	11	22
		14		25			11	
39	9.83092	14	9.96433	26	0.03567	9.86659	12	21
40	9.83106	14	9.96459	25	0.03541	9.86647	12	20
41	9.83120	13	9.96484	26	0.03516	9.86635	11	19
		14		25			11	
42	9.83133	14	9.96510	25	0.03490	9.86624	12	18
43	9.83147	14	9.96535	25	0.03465	9.86612	12	17
44	9.83161	13	9.96560	26	0.03440	9.86600	11	16
		14		25			11	
45	9.83174	14	9.96586	25	0.03414	9.86589	12	15
46	9.83188	14	9.96611	25	0.03389	9.86577	12	14
47	9.83202	13	9.96636	26	0.03364	9.86565	11	13
		14		25			11	
48	9.83215	14	9.96662	25	0.03338	9.86554	12	12
49	9.83229	13	9.96687	25	0.03313	9.86542	12	11
50	9.83242	14	9.96712	26	0.03288	9.86530	12	10
		14		25			12	
51	9.83256	14	9.96738	25	0.03262	9.86518	11	9
52	9.83270	13	9.96763	25	0.03237	9.86507	12	8
53	9.83283	14	9.96788	26	0.03212	9.86495	12	7
		13		25			12	
54	9.83297	13	9.96814	25	0.03186	9.86483	11	6
55	9.83310	14	9.96839	25	0.03161	9.86472	12	5
56	9.83324	14	9.96864	26	0.03136	9.86460	12	4
		13		25			12	
57	9.83338	13	9.96890	25	0.03110	9.86448	12	3
58	9.83351	14	9.96915	25	0.03085	9.86436	11	2
59	9.83365	15	9.96940	26	0.03060	9.86425	12	1
60	9.83378		9.96966		0.03034	9.86413		0
	Cos. 47		Cot. 47		Tang. 47	Sin. 47		

'	Sin. 43	Dif.	Tang. 43	D.c.	Cot. 43	Cos. 43	Dif.	'
0	9.83578		9.96966		0.03034	9.86415		60
1	9.83592	14	9.96991	25	0.03009	9.86401	12	59
2	9.83405	13	9.97016	25	0.02984	9.86389	12	58
		14		26			12	
3	9.83419	13	9.97042	25	0.02958	9.86377	11	57
4	9.83432	14	9.97067	25	0.02933	9.86366	12	56
5	9.83446	13	9.97092	26	0.02908	9.86354	12	55
		14		25			12	
6	9.83459	14	9.97118	25	0.02882	9.86342	12	54
7	9.83473	13	9.97143	25	0.02857	9.86330	12	53
8	9.83486	14	9.97168	25	0.02832	9.86318	12	52
		14		25			12	
9	9.83500	13	9.97193	26	0.02807	9.86306	11	51
10	9.83513	14	9.97219	25	0.02781	9.86295	12	50
11	9.83527	13	9.97244	25	0.02756	9.86283	12	49
		14		26			12	
12	9.83540	14	9.97269	26	0.02731	9.86271	12	48
13	9.83554	13	9.97293	25	0.02705	9.86259	12	47
14	9.83567	14	9.97320	25	0.02680	9.86247	12	46
		14		25			12	
15	9.83581	13	9.97345	26	0.02655	9.86235	12	45
16	9.83594	14	9.97371	25	0.02629	9.86223	12	44
17	9.83608	13	9.97396	25	0.02604	9.86211	11	43
		13		25			11	
18	9.83621	13	9.97421	26	0.02579	9.86200	12	42
19	9.83634	14	9.97447	25	0.02553	9.86188	12	41
20	9.83648	13	9.97472	25	0.02528	9.86176	12	40
		13		25			12	
21	9.83661	13	9.97497	26	0.02503	9.86164	12	39
22	9.83674	14	9.97523	25	0.02477	9.86152	12	38
23	9.83688	13	9.97548	25	0.02452	9.86140	12	37
		13		25			12	
24	9.83701	14	9.97573	25	0.02427	9.86128	12	36
25	9.83715	13	9.97598	26	0.02402	9.86116	12	35
26	9.83728	13	9.97624	25	0.02376	9.86104	12	34
		13		25			12	
27	9.83741	14	9.97649	25	0.02351	9.86092	12	33
28	9.83755	13	9.97674	26	0.02326	9.86080	12	32
29	9.83768	13	9.97700	25	0.02300	9.86068	12	31
30	9.83781	13	9.97725	25	0.02275	9.86056	12	30
	Cos. 46		Cot. 46		Tang. 46	Sin. 46		

	Sin. 43	Dif.	Tang. 43	D. c.	Cot. 43	Cos. 43	Dif.	
30	9.83781	14	9.97725	25	0.02275	9.86056	12	36
31	9.83795	13	9.97750	26	0.02250	9.86044	12	29
32	9.83808	15	9.97776	25	0.02224	9.86032	12	28
33	9.83821	13	9.97801	25	0.02199	9.86020	12	27
34	9.83834	14	9.97826	25	0.02174	9.86008	12	26
35	9.83848	13	9.97851	26	0.02149	9.85996	12	25
36	9.83861	13	9.97877	25	0.02123	9.85984	12	24
37	9.83874	13	9.97902	25	0.02098	9.85972	12	23
38	9.83887	14	9.97927	26	0.02073	9.85960	12	22
39	9.83901	13	9.97953	25	0.02047	9.85948	12	21
40	9.83914	13	9.97978	25	0.02022	9.85936	12	20
41	9.83927	15	9.98003	26	0.01997	9.85924	12	19
42	9.83940	14	9.98029	25	0.01971	9.85912	12	18
43	9.83954	13	9.98054	25	0.01946	9.85900	12	17
44	9.83967	13	9.98079	25	0.01921	9.85888	12	16
45	9.83980	13	9.98104	26	0.01896	9.85876	12	15
46	9.83993	13	9.98130	25	0.01870	9.85864	12	14
47	9.84006	14	9.98155	25	0.01845	9.85851	12	13
48	9.84020	13	9.98180	26	0.01820	9.85839	12	12
49	9.84033	13	9.98206	25	0.01794	9.85827	12	11
50	9.84046	13	9.98231	25	0.01769	9.85815	12	10
51	9.84059	13	9.98256	25	0.01744	9.85803	12	9
52	9.84072	13	9.98281	26	0.01719	9.85791	12	8
53	9.84085	13	9.98307	25	0.01693	9.85779	12	7
54	9.84098	14	9.98332	25	0.01668	9.85766	12	6
55	9.84112	13	9.98357	26	0.01643	9.85754	12	5
56	9.84125	13	9.98383	25	0.01617	9.85742	12	4
57	9.84138	13	9.98408	25	0.01592	9.85730	12	3
58	9.84151	13	9.98433	25	0.01567	9.85718	12	2
59	9.84164	13	9.98458	26	0.01542	9.85706	12	1
60	9.84177		9.98484		0.01516	9.85693	15	0
	Cos. 46		Cot. 46		Tang. 46	Sin. 46		

'	Sin. 44	Dif.	Tang. 44	D. c.	Cot. 44	Cos. 44	Dif.	'
0	9.84177		9.98484		0.01516	9.85693		60
1	9.84190	13	9.98509	25	0.01491	9.85681	12	59
2	9.84203	13	9.98534	25	0.01466	9.85669	12	58
		15		26			12	
3	9.84216	13	9.98560	25	0.01440	9.85657	12	57
4	9.84229	13	9.98585	25	0.01415	9.85645	12	56
5	9.84242	13	9.98610	25	0.01390	9.85632	13	55
		13		25			12	
6	9.84255	14	9.98635	26	0.01365	9.85620	12	54
7	9.84269	13	9.98661	25	0.01339	9.85608	12	53
8	9.84282	13	9.98686	25	0.01314	9.85596	12	52
		13		25			13	
9	9.84295	13	9.98711	26	0.01289	9.85583	12	51
10	9.84308	13	9.98737	25	0.01263	9.85571	12	50
11	9.84321	13	9.98762	25	0.01238	9.85559	12	49
		13		25			12	
12	9.84334	15	9.98787	25	0.01213	9.85547	13	48
13	9.84347	13	9.98812	26	0.01188	9.85534	12	47
14	9.84360	13	9.98838	25	0.01162	9.85522	12	46
		13		25			12	
15	9.84373	12	9.98863	25	0.01137	9.85510	13	45
16	9.84385	13	9.98888	25	0.01112	9.85497	12	44
17	9.84398	13	9.98913	25	0.01087	9.85485	12	43
		13		26			12	
18	9.84411	13	9.98939	25	0.01061	9.85473	13	42
19	9.84424	13	9.98964	25	0.01036	9.85460	12	41
20	9.84437	13	9.98989	25	0.01011	9.85448	12	40
		15		26			12	
21	9.84450	15	9.99015	25	0.00985	9.85436	13	39
22	9.84463	13	9.99040	25	0.00960	9.85423	13	38
23	9.84476	13	9.99065	25	0.00935	9.85411	12	37
		13		25			12	
24	9.84489	13	9.99090	26	0.00910	9.85399	12	36
25	9.84502	15	9.99116	25	0.00884	9.85386	13	35
26	9.84515	15	9.99141	25	0.00859	9.85374	12	34
		13		25			13	
27	9.84528	12	9.99166	25	0.00834	9.85361	12	33
28	9.84540	13	9.99191	26	0.00809	9.85349	12	32
29	9.84553	13	9.99217	25	0.00783	9.85337	12	31
30	9.84566	13	9.99242	25	0.00758	9.85324	13	30
	Cos. 45		Cot. 45		Tang. 45	Sin. 45		

	Sin. 44	Dif.	Tang. 44	D.c.	Cot. 44	Cos. 44	Dif.	
30	9.84566	13	9.99242	25	0.00758	9.85324	12	30
31	9.84579	13	9.99267	26	0.00733	9.85312	13	29
32	9.84592	13	9.99293	25	0.00707	9.85299	12	28
33	9.84605	13	9.99318	25	0.00682	9.85287	13	27
34	9.84618	12	9.99343	25	0.00657	9.85274	12	26
35	9.84630	13	9.99368	26	0.00632	9.85262	12	25
36	9.84643	13	9.99394	25	0.00606	9.85250	13	24
37	9.84656	13	9.99419	25	0.00581	9.85237	12	23
38	9.84669	13	9.99444	25	0.00556	9.85225	13	22
39	9.84682	12	9.99469	26	0.00531	9.85212	12	21
40	9.84694	13	9.99495	25	0.00505	9.85200	13	20
41	9.84707	13	9.99520	25	0.00480	9.85187	12	19
42	9.84720	13	9.99545	25	0.00455	9.85175	13	18
43	9.84733	12	9.99570	26	0.00430	9.85162	12	17
44	9.84745	13	9.99596	25	0.00404	9.85150	13	16
45	9.84758	13	9.99621	25	0.00379	9.85137	12	15
46	9.84771	13	9.99646	26	0.00354	9.85125	13	14
47	9.84784	12	9.99672	25	0.00328	9.85112	12	13
48	9.84796	13	9.99697	25	0.00303	9.85100	13	12
49	9.84809	13	9.99722	25	0.00278	9.85087	13	11
50	9.84822	13	9.99747	26	0.00253	9.85074	12	10
51	9.84835	12	9.99773	25	0.00227	9.85062	13	9
52	9.84847	13	9.99798	25	0.00202	9.85049	12	8
53	9.84860	13	9.99823	25	0.00177	9.85037	13	7
54	9.84873	12	9.99848	26	0.00152	9.85024	12	6
55	9.84885	13	9.99874	25	0.00126	9.85012	13	5
56	9.84898	13	9.99899	25	0.00101	9.84999	13	4
57	9.84911	12	9.99924	25	0.00076	9.84986	12	3
58	9.84923	13	9.99949	26	0.00051	9.84974	15	2
59	9.84936	13	9.99975	25	0.00025	9.84961	12	1
60	9.84949		0.00000	25	0.00000	9.84949		0
	Cos. 43		Cot. 45		Tang. 45	Sin. 45		

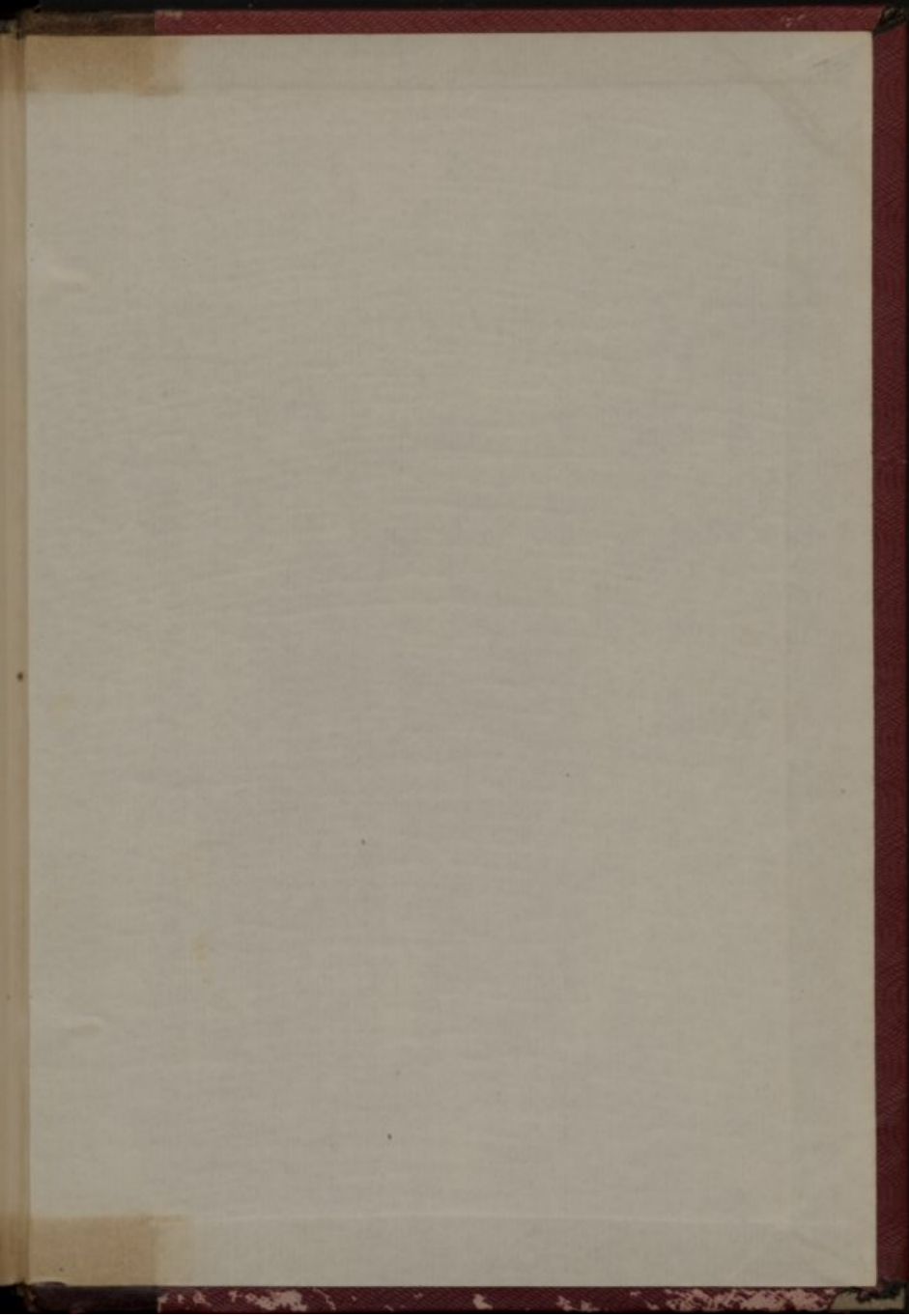
Year	Month	Day	Event	Location	Notes
1800	Jan	1
1800	Jan	2
1800	Jan	3
1800	Jan	4
1800	Jan	5
1800	Jan	6
1800	Jan	7
1800	Jan	8
1800	Jan	9
1800	Jan	10
1800	Jan	11
1800	Jan	12
1800	Jan	13
1800	Jan	14
1800	Jan	15
1800	Jan	16
1800	Jan	17
1800	Jan	18
1800	Jan	19
1800	Jan	20
1800	Jan	21
1800	Jan	22
1800	Jan	23
1800	Jan	24
1800	Jan	25
1800	Jan	26
1800	Jan	27
1800	Jan	28
1800	Jan	29
1800	Jan	30
1800	Jan	31
1800	Feb	1
1800	Feb	2
1800	Feb	3
1800	Feb	4
1800	Feb	5
1800	Feb	6
1800	Feb	7
1800	Feb	8
1800	Feb	9
1800	Feb	10
1800	Feb	11
1800	Feb	12
1800	Feb	13
1800	Feb	14
1800	Feb	15
1800	Feb	16
1800	Feb	17
1800	Feb	18
1800	Feb	19
1800	Feb	20
1800	Feb	21
1800	Feb	22
1800	Feb	23
1800	Feb	24
1800	Feb	25
1800	Feb	26
1800	Feb	27
1800	Feb	28
1800	Feb	29
1800	Feb	30
1800	Mar	1
1800	Mar	2
1800	Mar	3
1800	Mar	4
1800	Mar	5
1800	Mar	6
1800	Mar	7
1800	Mar	8
1800	Mar	9
1800	Mar	10
1800	Mar	11
1800	Mar	12
1800	Mar	13
1800	Mar	14
1800	Mar	15
1800	Mar	16
1800	Mar	17
1800	Mar	18
1800	Mar	19
1800	Mar	20
1800	Mar	21
1800	Mar	22
1800	Mar	23
1800	Mar	24
1800	Mar	25
1800	Mar	26
1800	Mar	27
1800	Mar	28
1800	Mar	29
1800	Mar	30
1800	Mar	31
1800	Apr	1
1800	Apr	2
1800	Apr	3
1800	Apr	4
1800	Apr	5
1800	Apr	6
1800	Apr	7
1800	Apr	8
1800	Apr	9
1800	Apr	10
1800	Apr	11
1800	Apr	12
1800	Apr	13
1800	Apr	14
1800	Apr	15
1800	Apr	16
1800	Apr	17
1800	Apr	18
1800	Apr	19
1800	Apr	20
1800	Apr	21
1800	Apr	22
1800	Apr	23
1800	Apr	24
1800	Apr	25
1800	Apr	26
1800	Apr	27
1800	Apr	28
1800	Apr	29
1800	Apr	30
1800	Apr	30

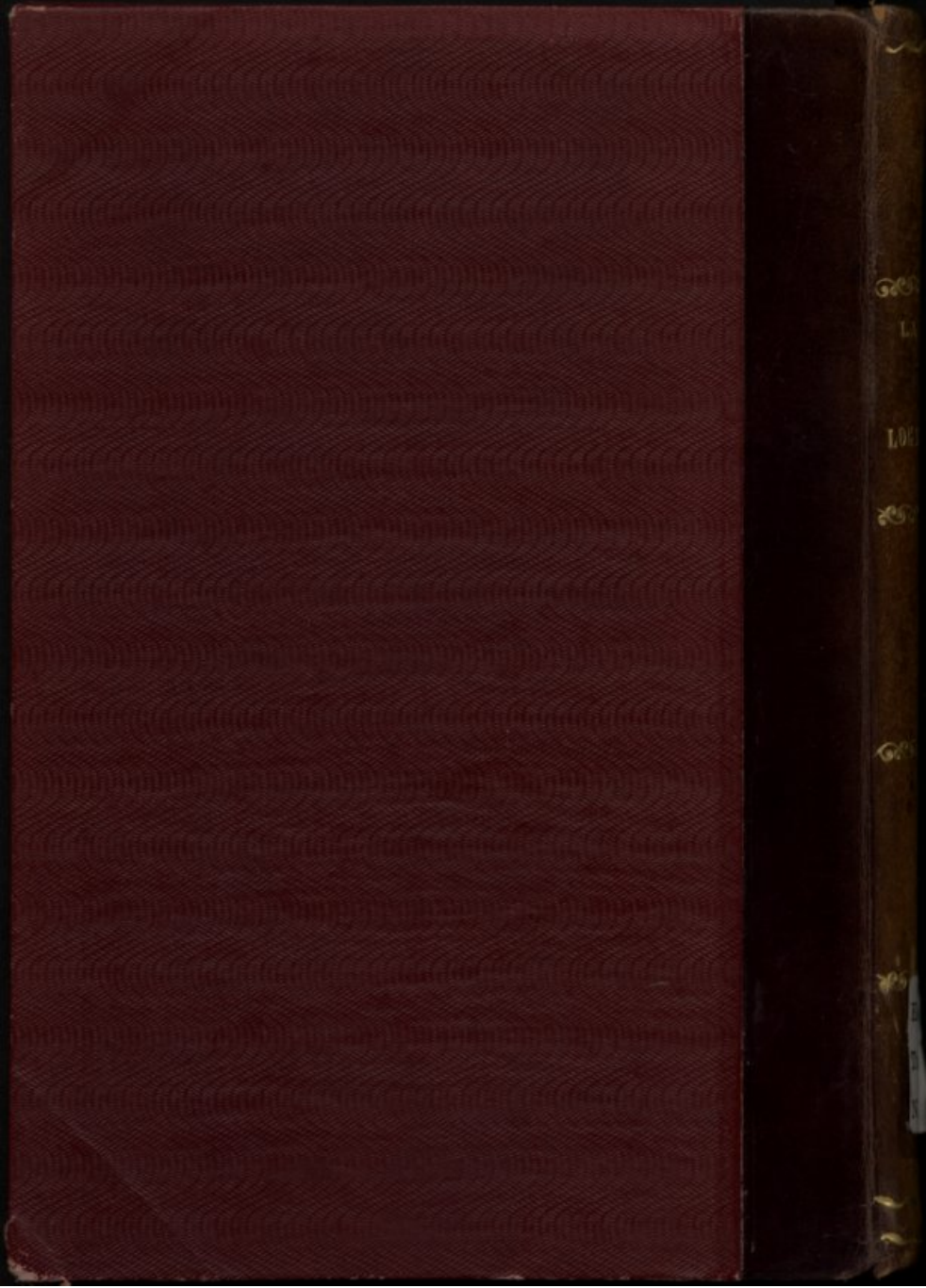












LA LANDE

LOGARITHMIQUE

Est. B. / SR

Tab.

N.º