

Estão archivadas n' este livro quinze estampas de desenhos relativos
às obras de reconstrução das Hospitães da Universidade.

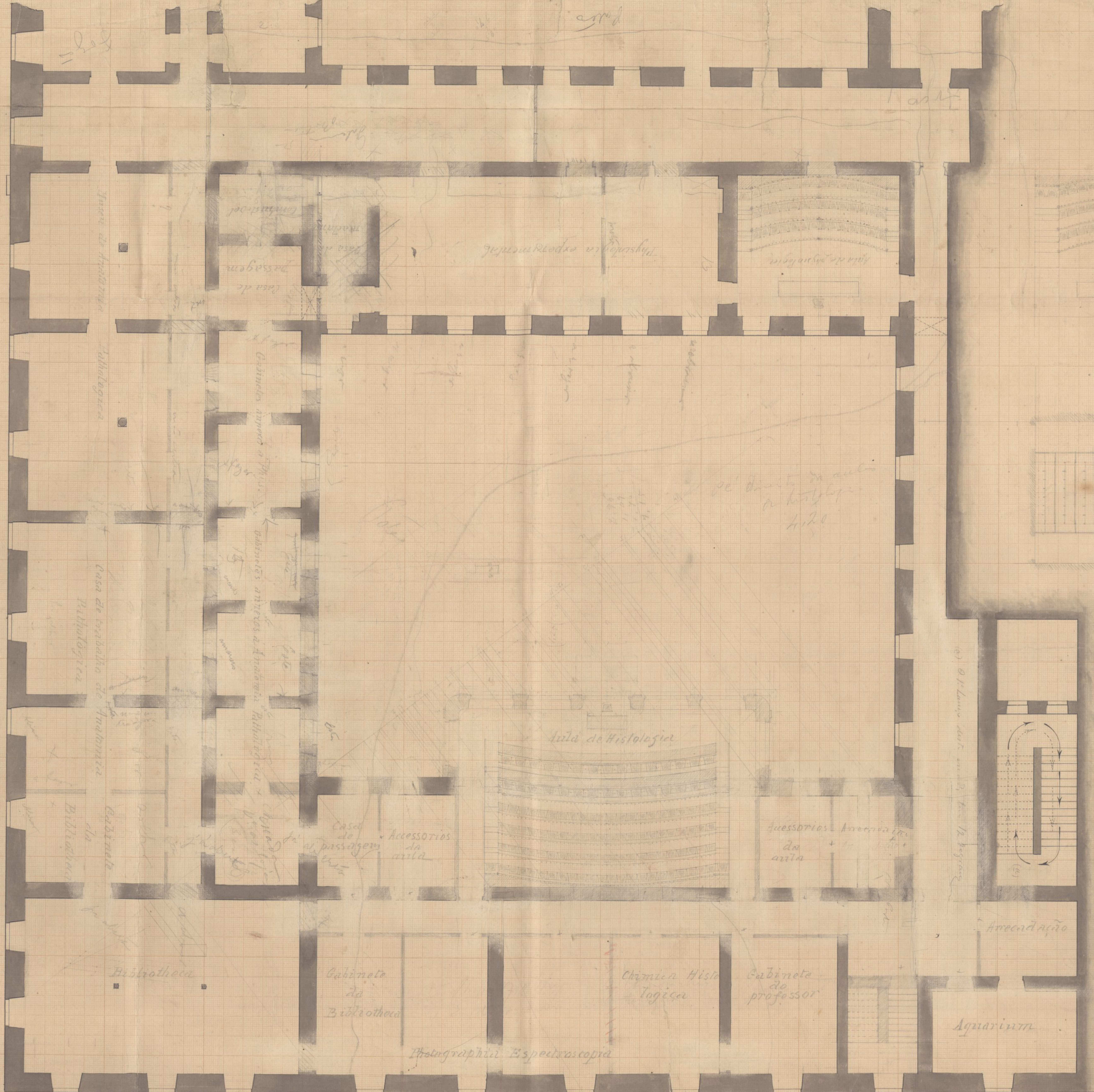
Administração das Hospitães da Universidade de Coimbra,
1.º de julho de 1884.

O Administrador,

Antonio Augusto da Costa Sousa

Estabelecimentos da Faculdade de Me-
decina no edificio do Museu

Costa Sousa



11

11

11

Casa de passagem

Phylogenia experimental

Casa de passagem

Casa de passagem

Cabinete de Anatomia

Cabinete de Anatomia

Casa de trabalho de Anatomia

Cabinete de Anatomia

Cabinete de Anatomia

Casa de passagem

Accessorios da aula

Accessorios da aula

Bibliotheca

Cabinete da Bibliotheca

Chimica Histologica

Cabinete do professor

Aparato

Photographia Espectroscopia

Escadaria

Escadaria

Handwritten notes and sketches on the left margin, including a staircase drawing and various measurements.

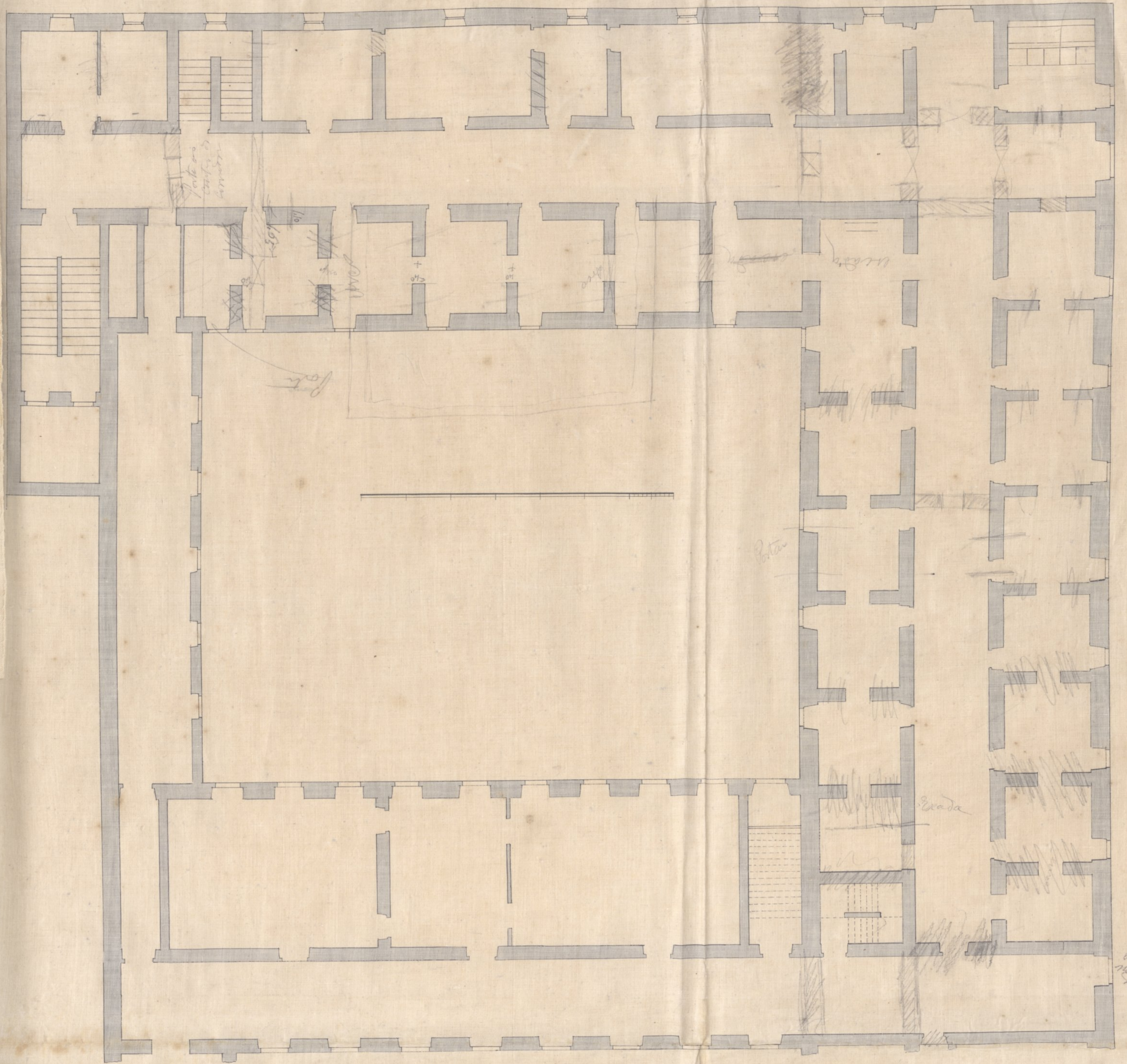
Handwritten notes at the bottom right, including the word 'Chimica'.

2 (a)



Handwritten text, possibly a title or description, including the letter 'B'.





Porto
Cidade
Lisboa

1/10

1/10

1/10

+

+

Porto

Porto

Evada

o plano geral

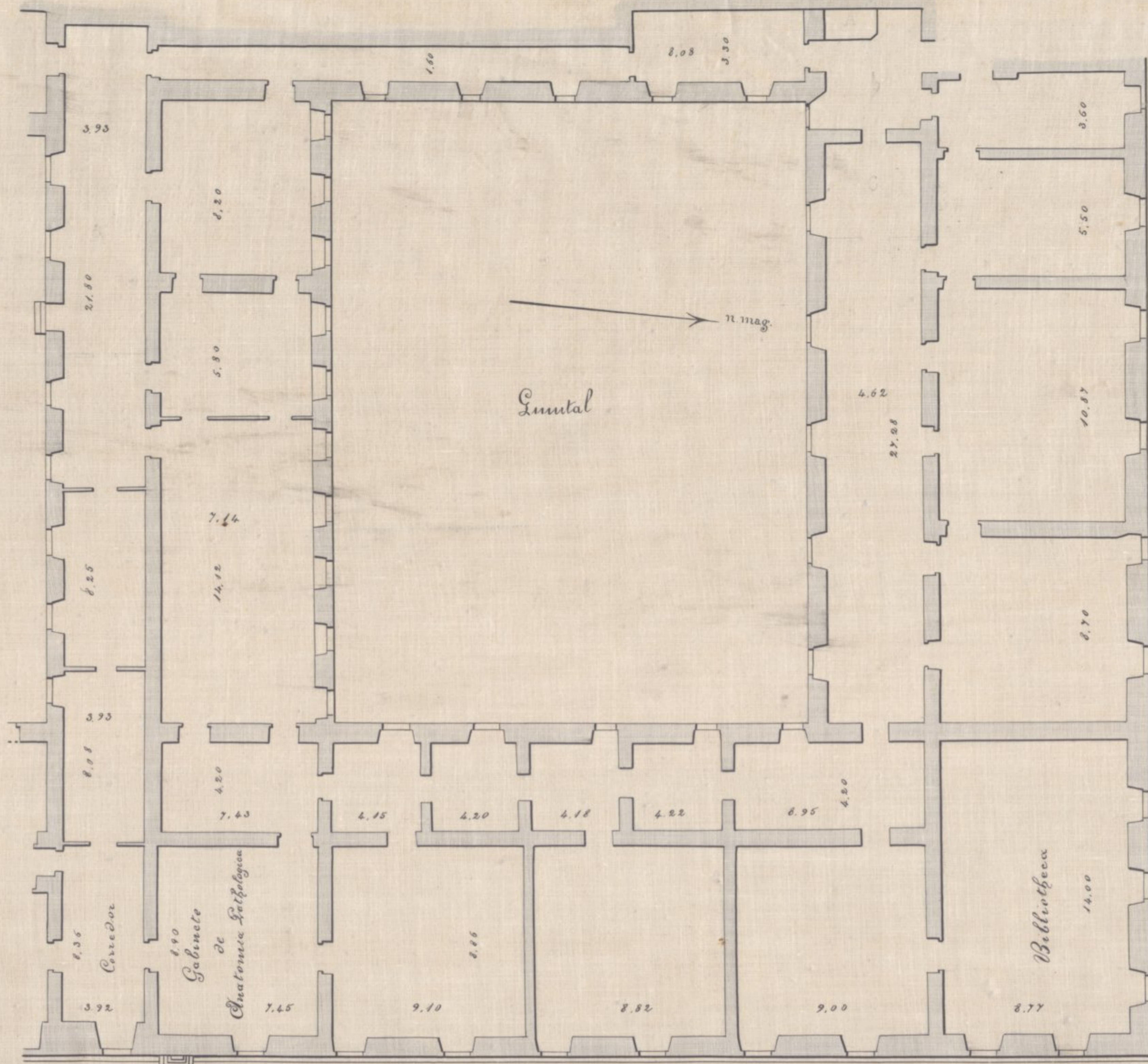
o plano
na primeira
sala

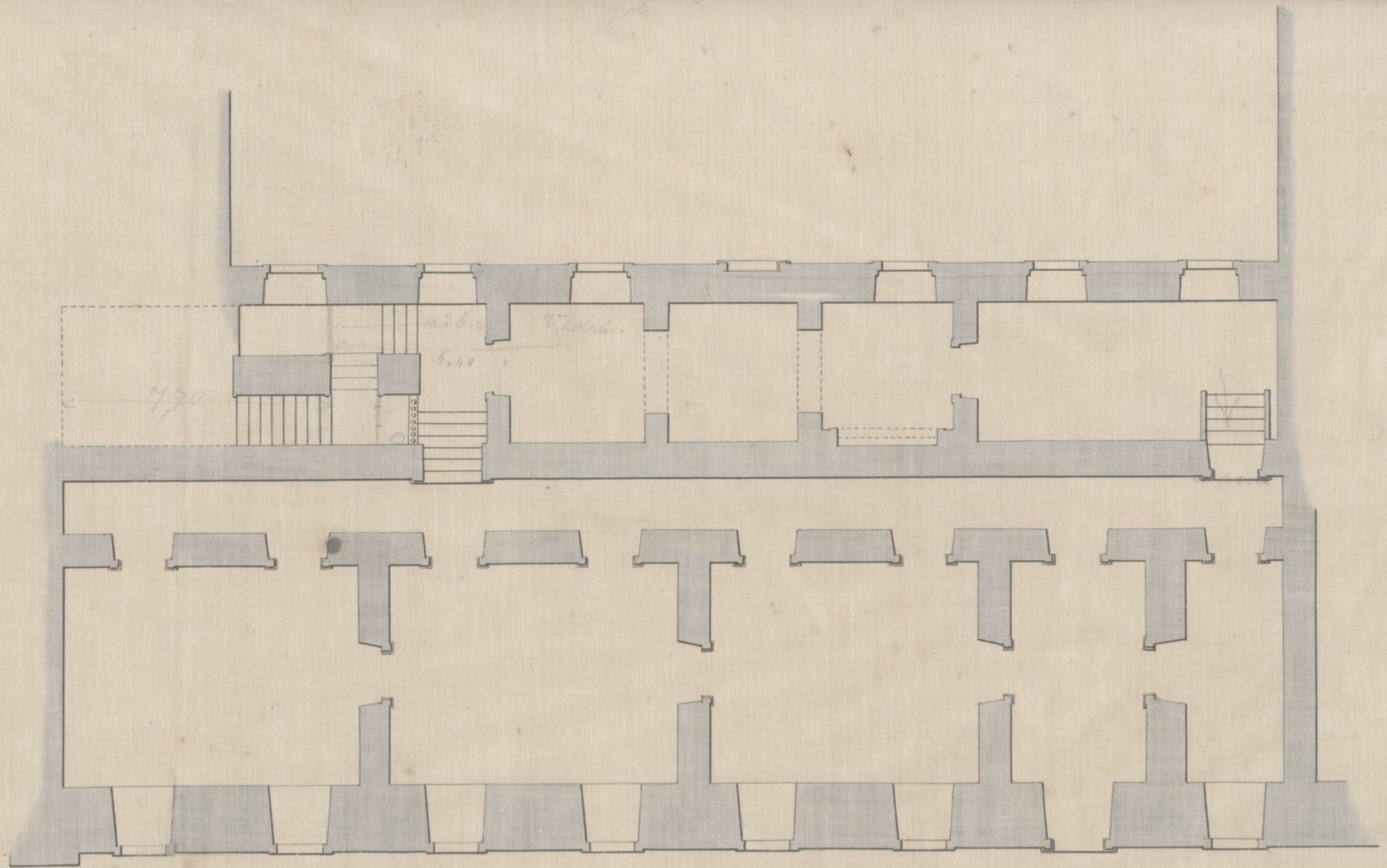
Edifício do Museu de Coimbra

Planta

Escala $\frac{1}{200}$

Cópia de uma planta levantada pela Direcção das Obras publicas em Julho de 1880



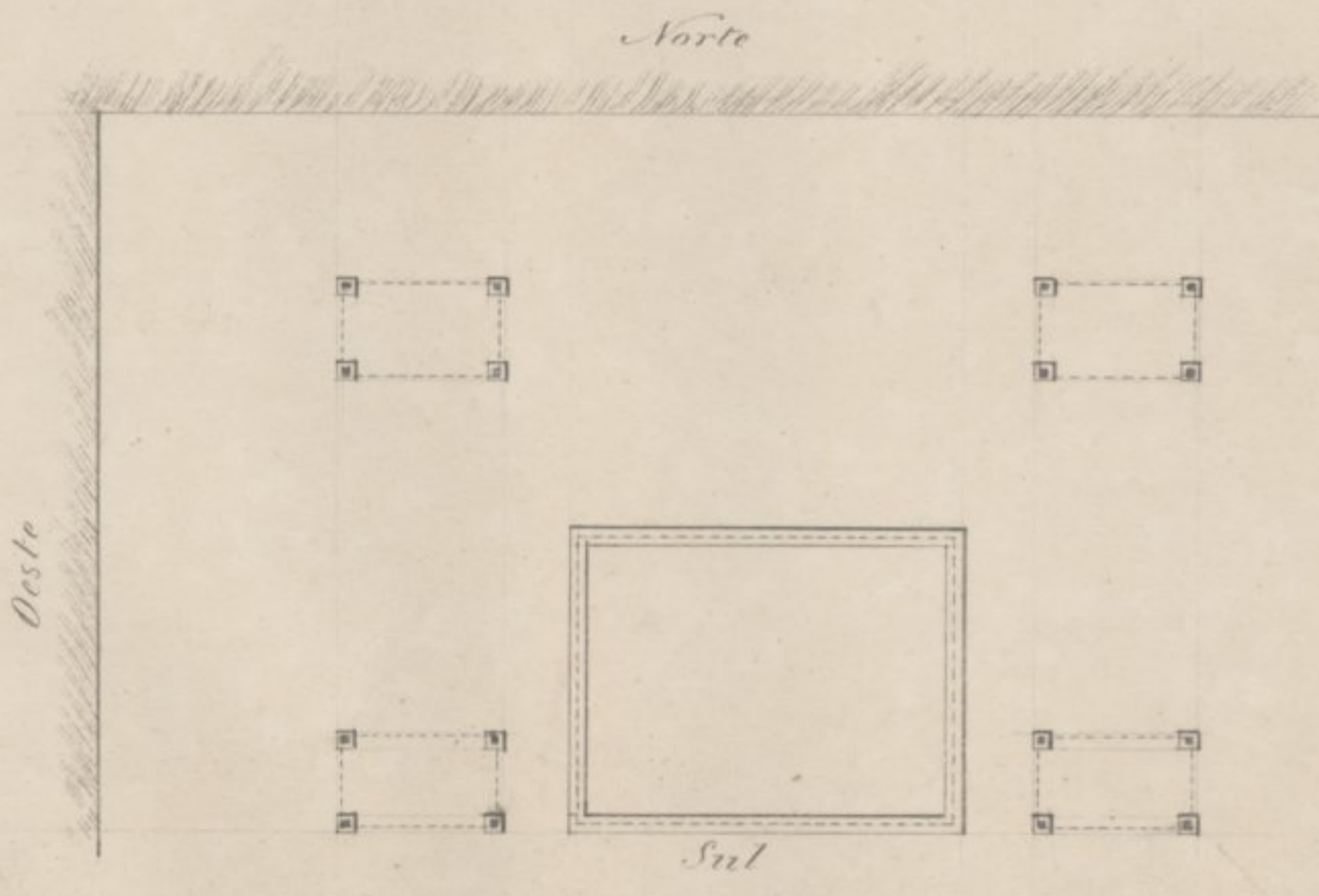


5 10 20 30 40 50 60 70 80 90 100 *Palmos*



5. Suel

Fig. 100



Escala $\frac{1}{100}$

9(a)

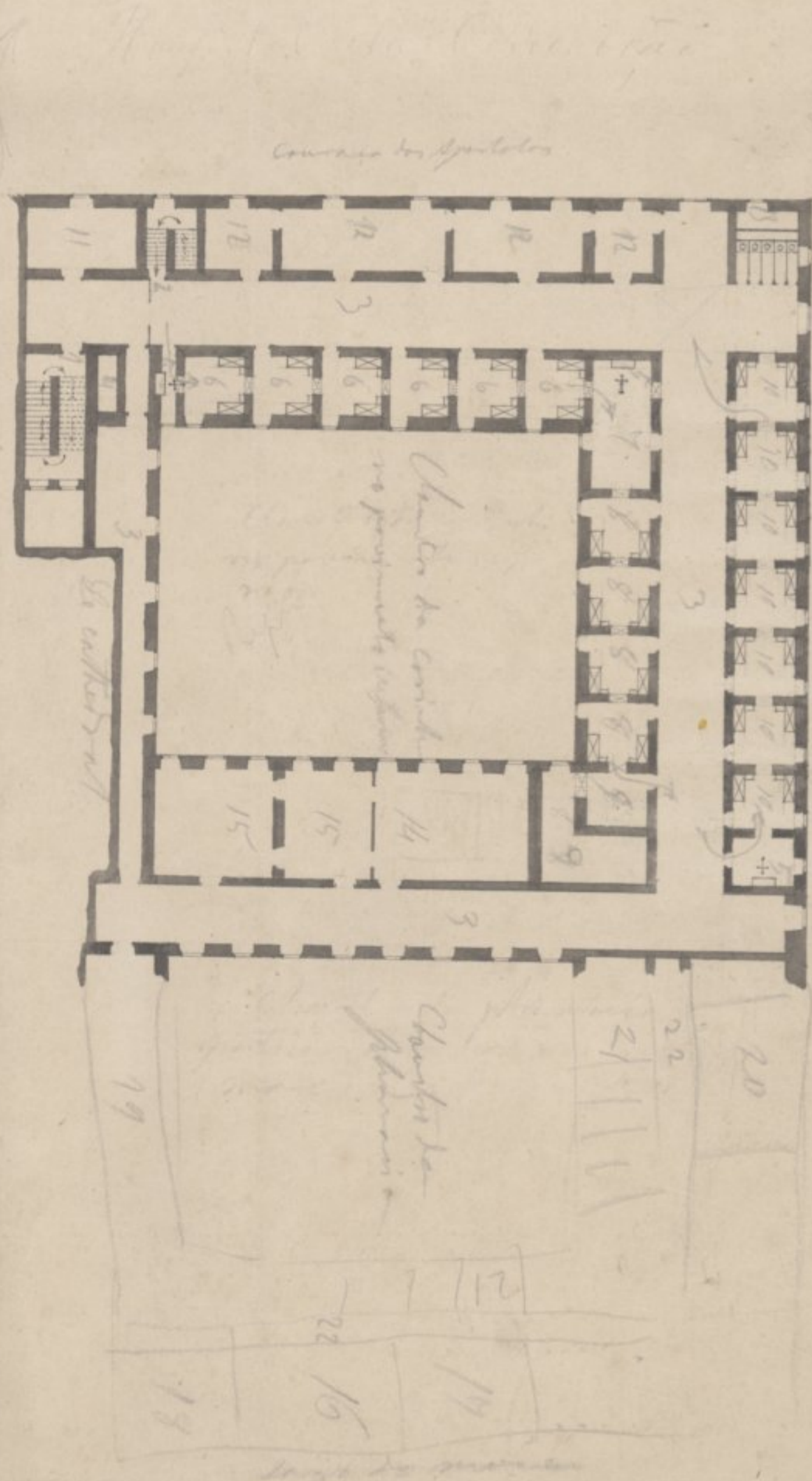
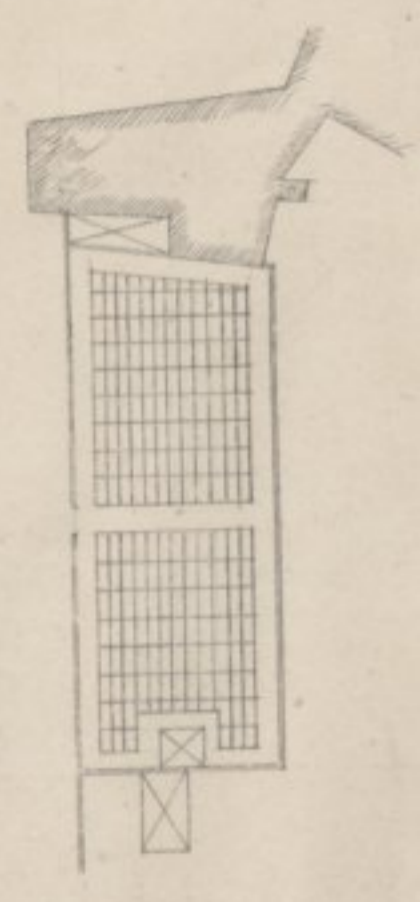
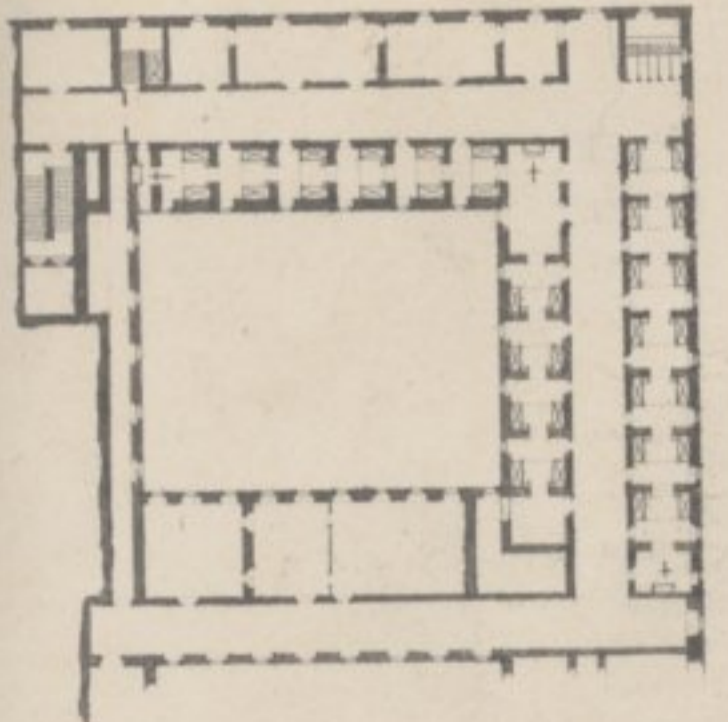
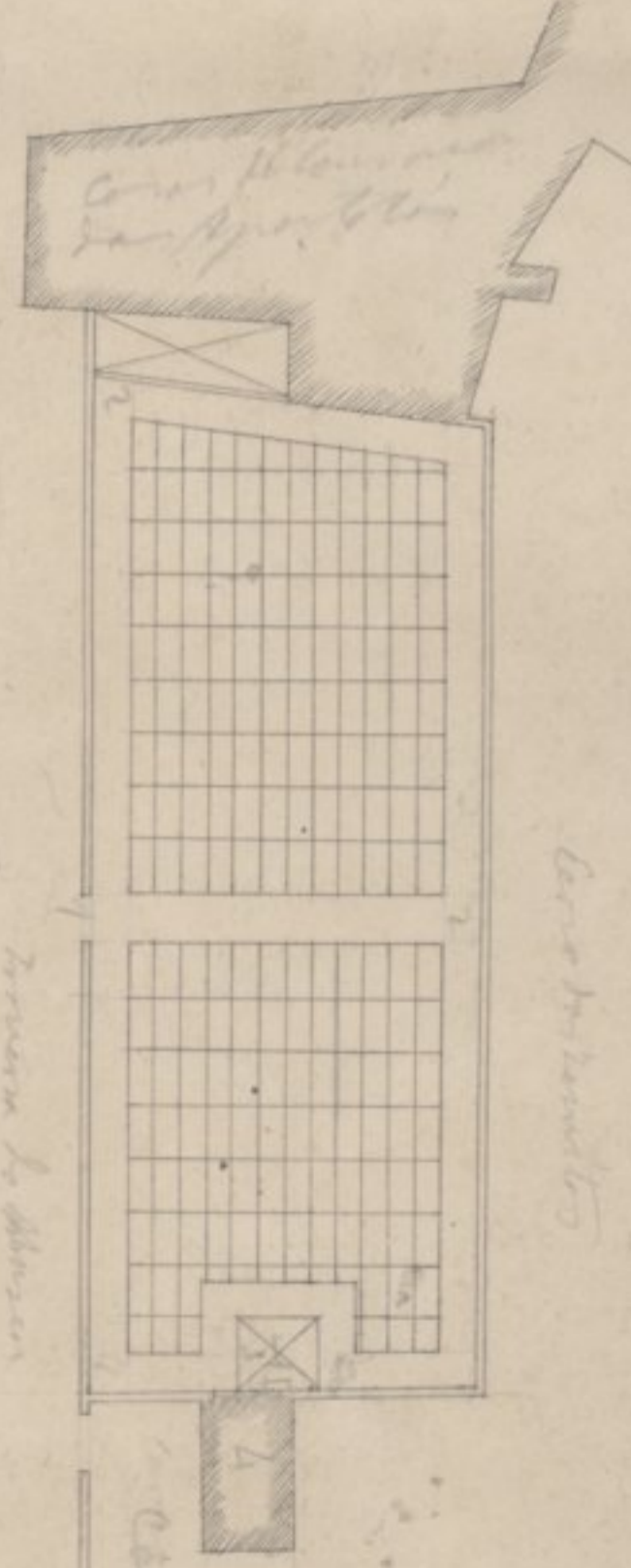


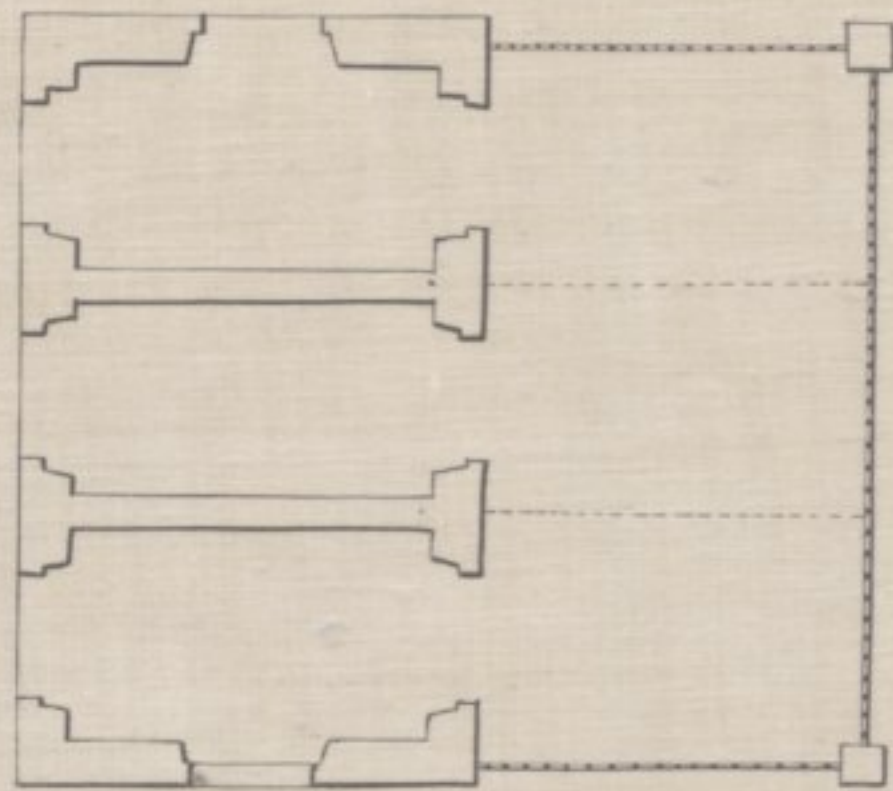
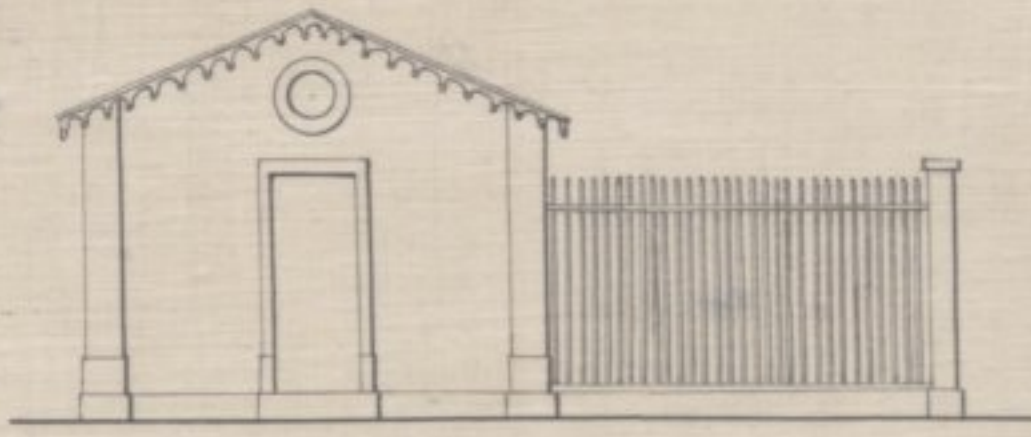
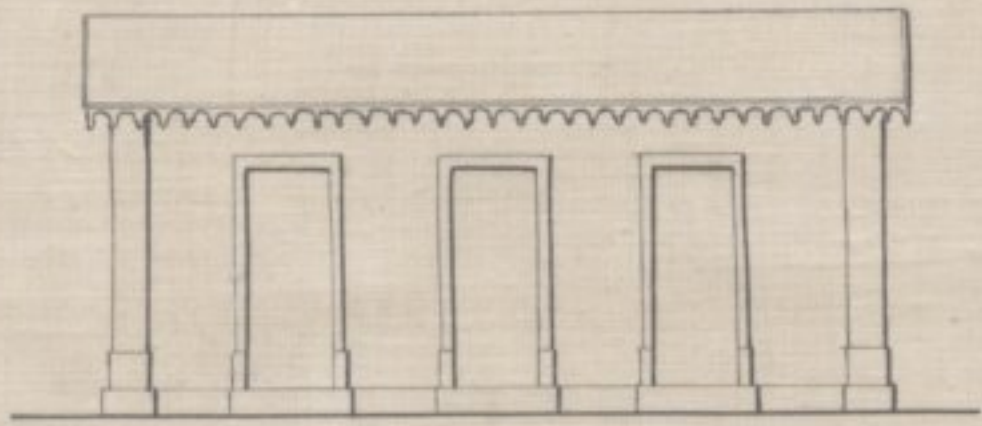
Fig. 101



Cuartos de soldados

Cuartos de enfermos

(6)



ALOJAMENTO D'ANIMAES VIVOS

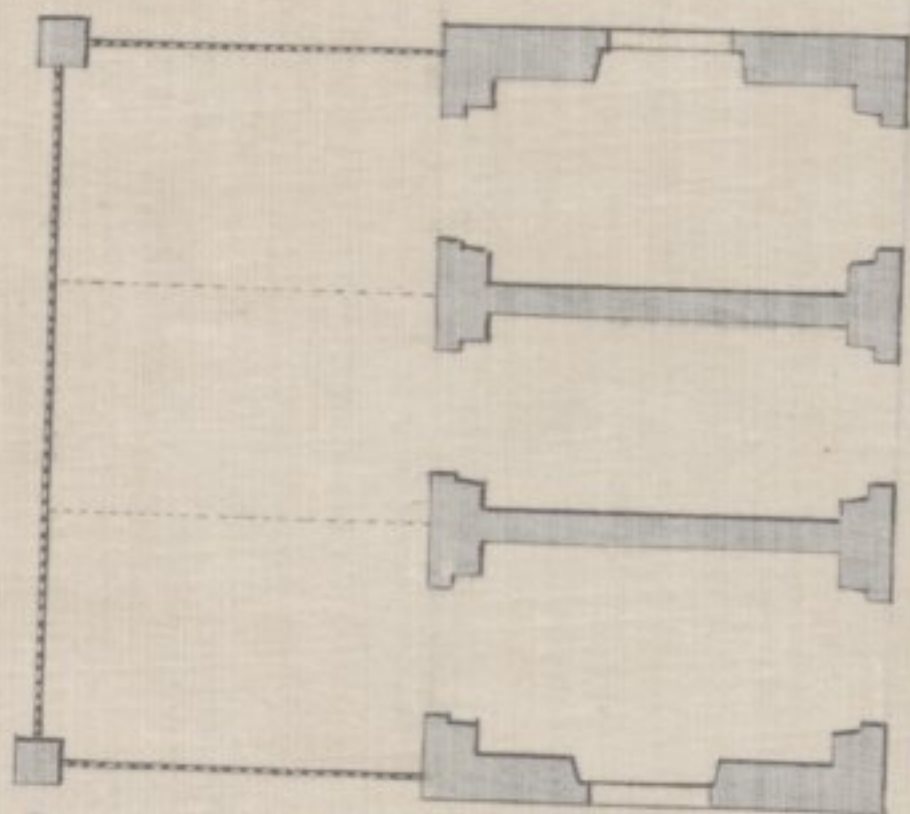
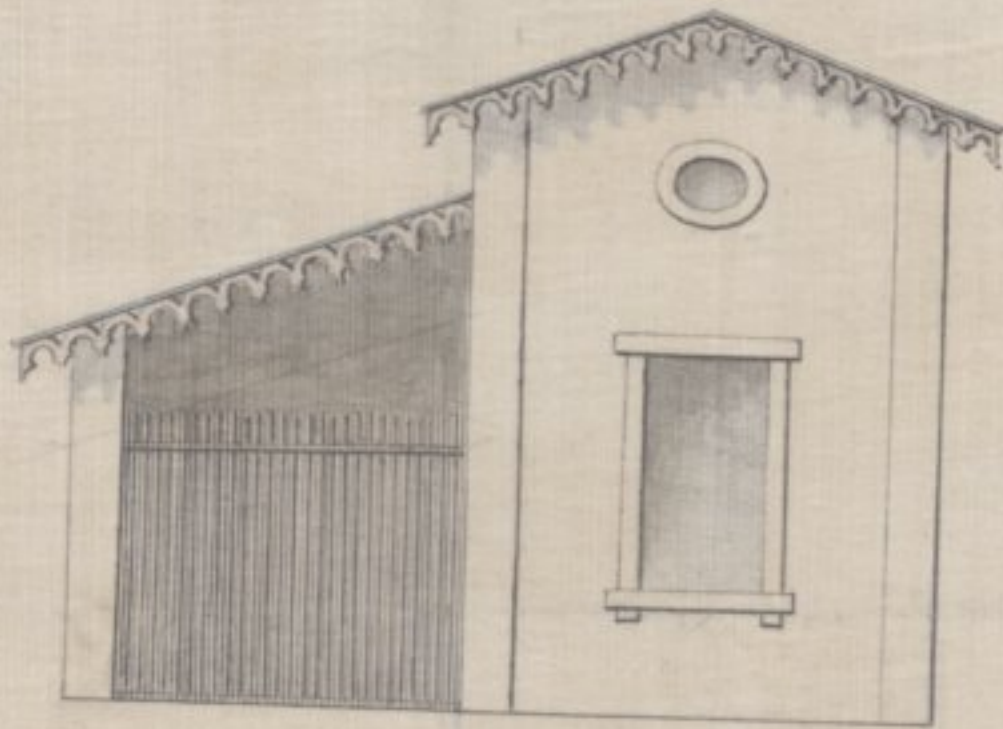


Fig. 1.^a Pavilhões Anatomicos

6 (m)
Est. 1.^a

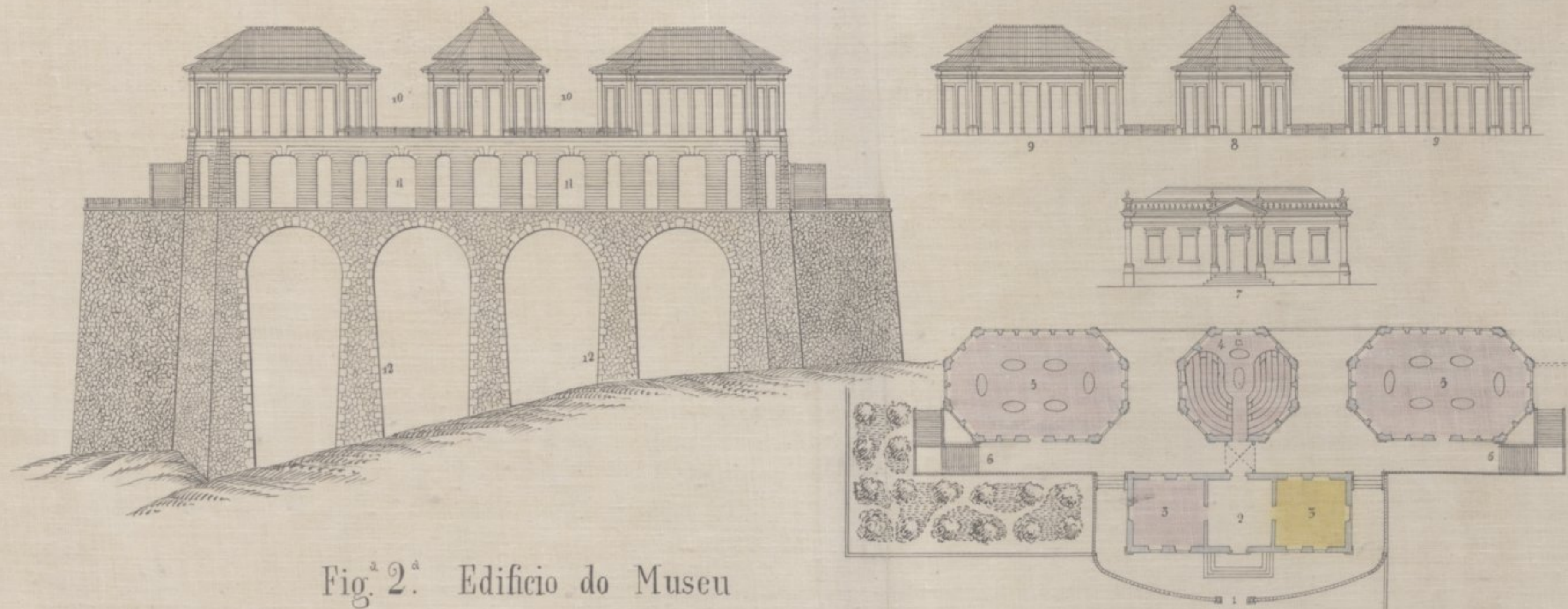
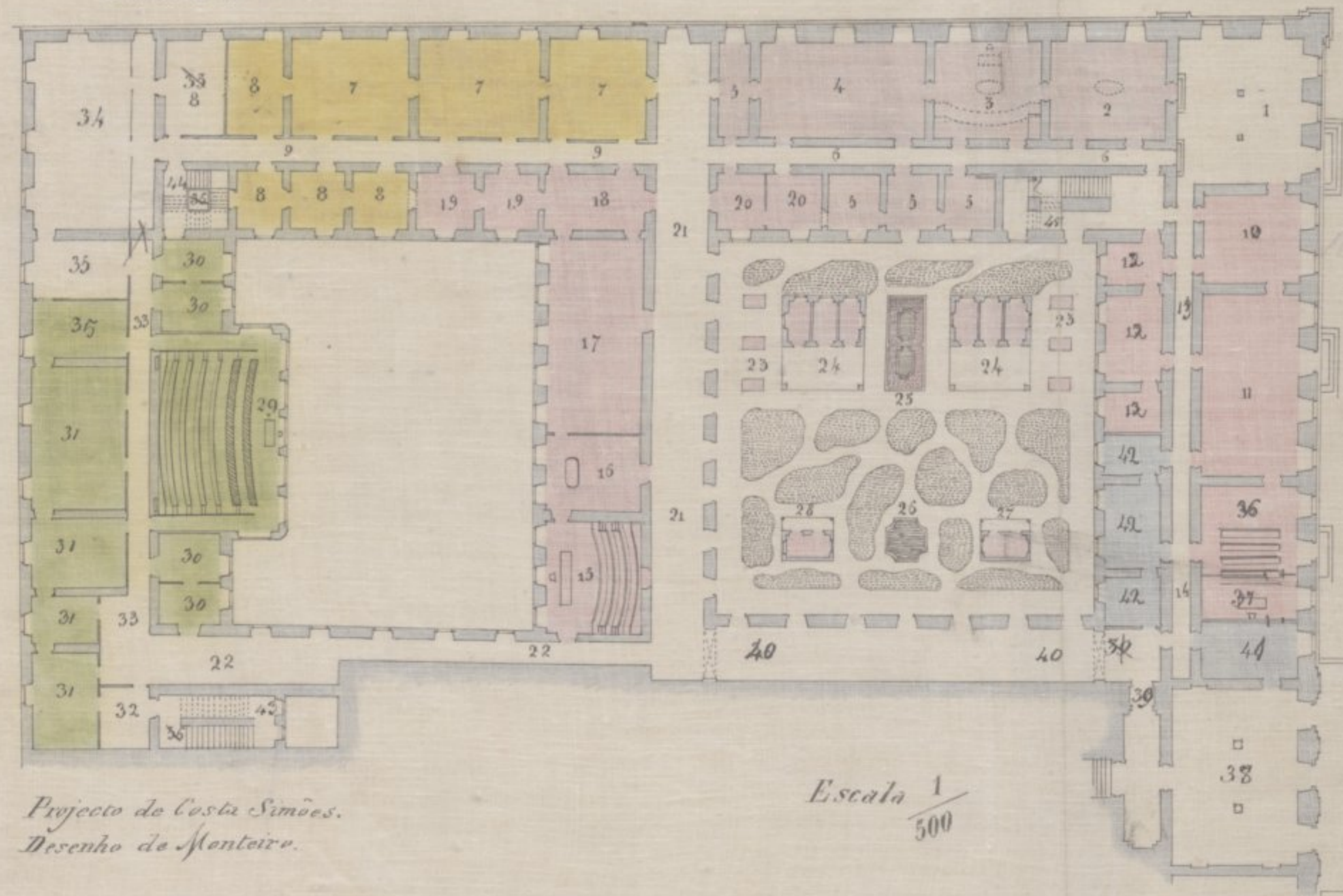


Fig. 2.^a Edifício do Museu

Travessa do Museu

- Medicina operatória* [pink box]
- Anatomia normal* [light purple box]
- Anatomia pathologica* [yellow box]
- Histologia* [green box]
- Fisiologia experimental* [light blue box]
- Porteiro* [blue box]
- Diversas* [white box]

Cursos dos Apotecas



Largo do Museu

Laboratorio Chimico

Projecto de Costa Simões.
Desenho de Monteiro.

Escala 1/500

Fig. 1ª

Cerco dos Jesuitas

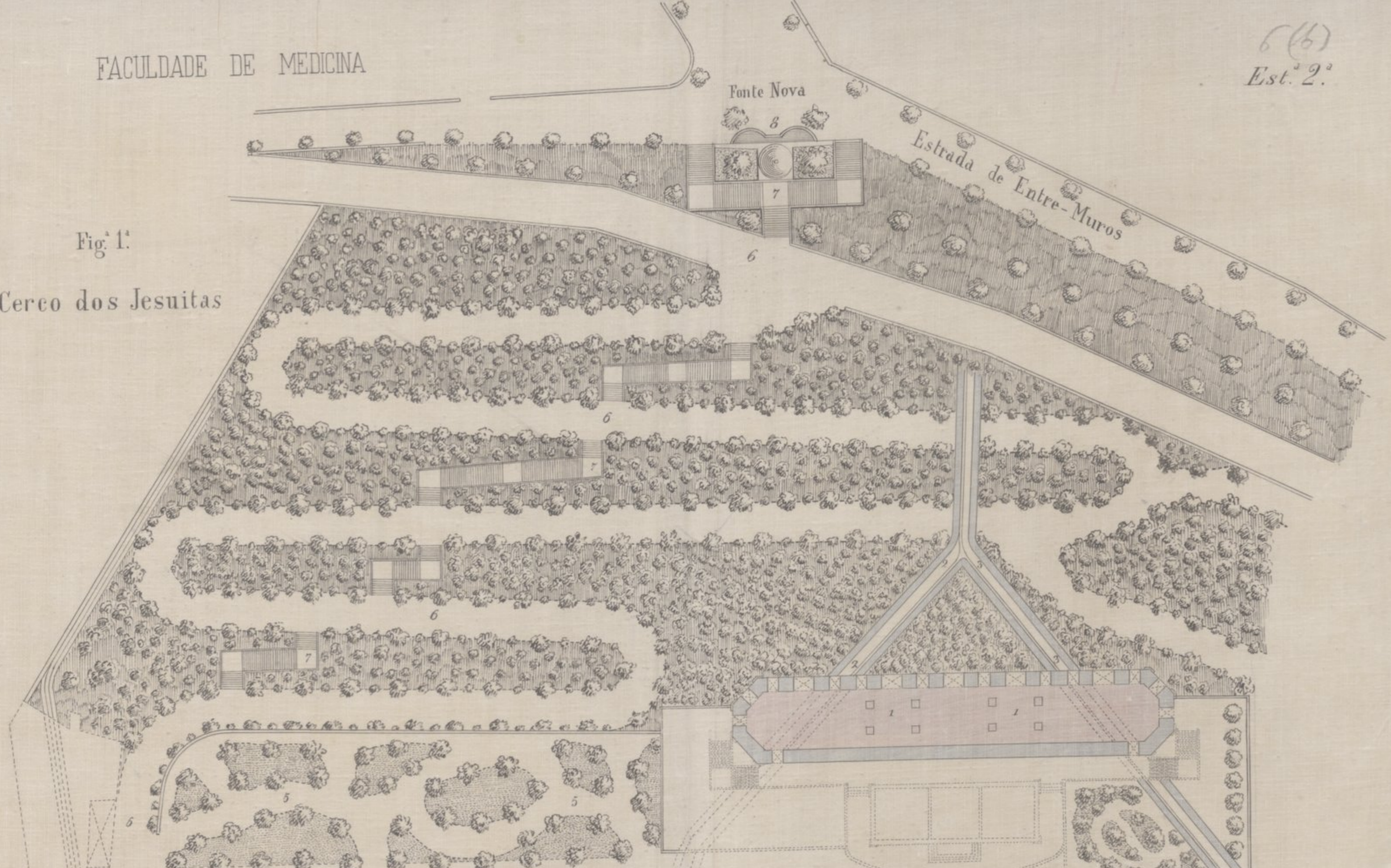
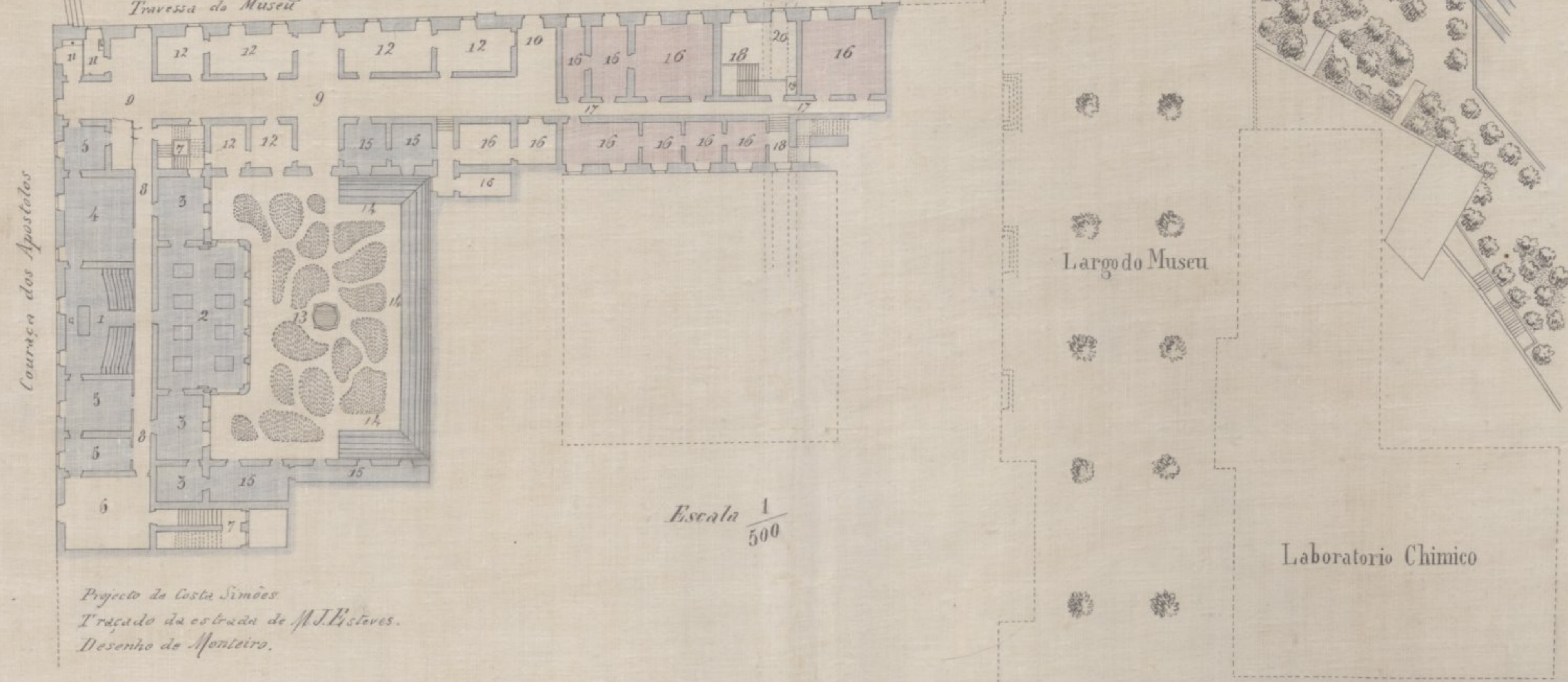


Fig. 2ª Edifício do Museu



- Anatomia normal
- Toxicologia e chim. med.
- Diversas

Escala 1/500

Projecto de Costa Simões
Traçado da estrada de M. J. Esteves.
Desenho de Monteiro.

Laboratorio Chimico

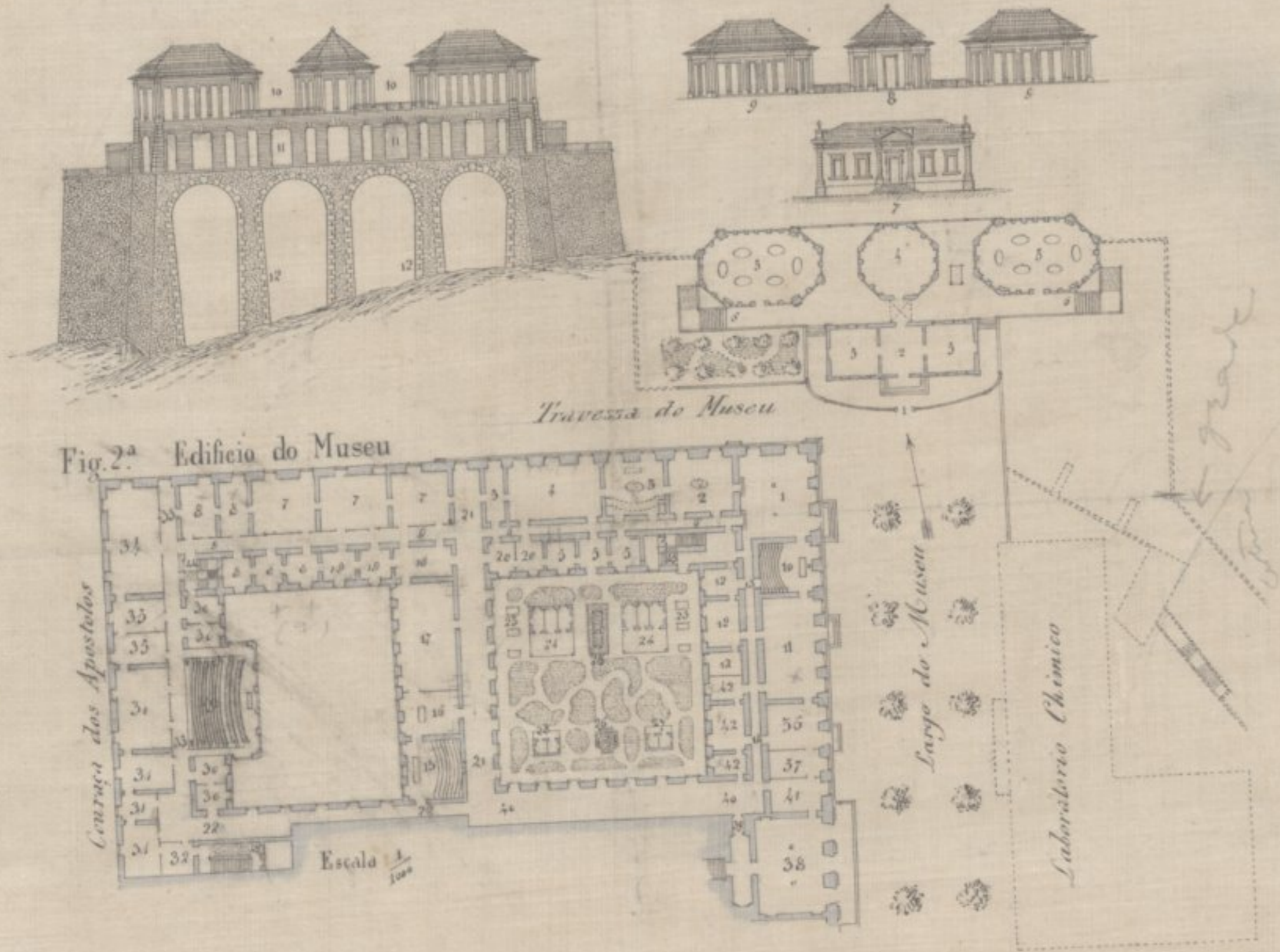


Fig. 2.^a Edifício do Museu

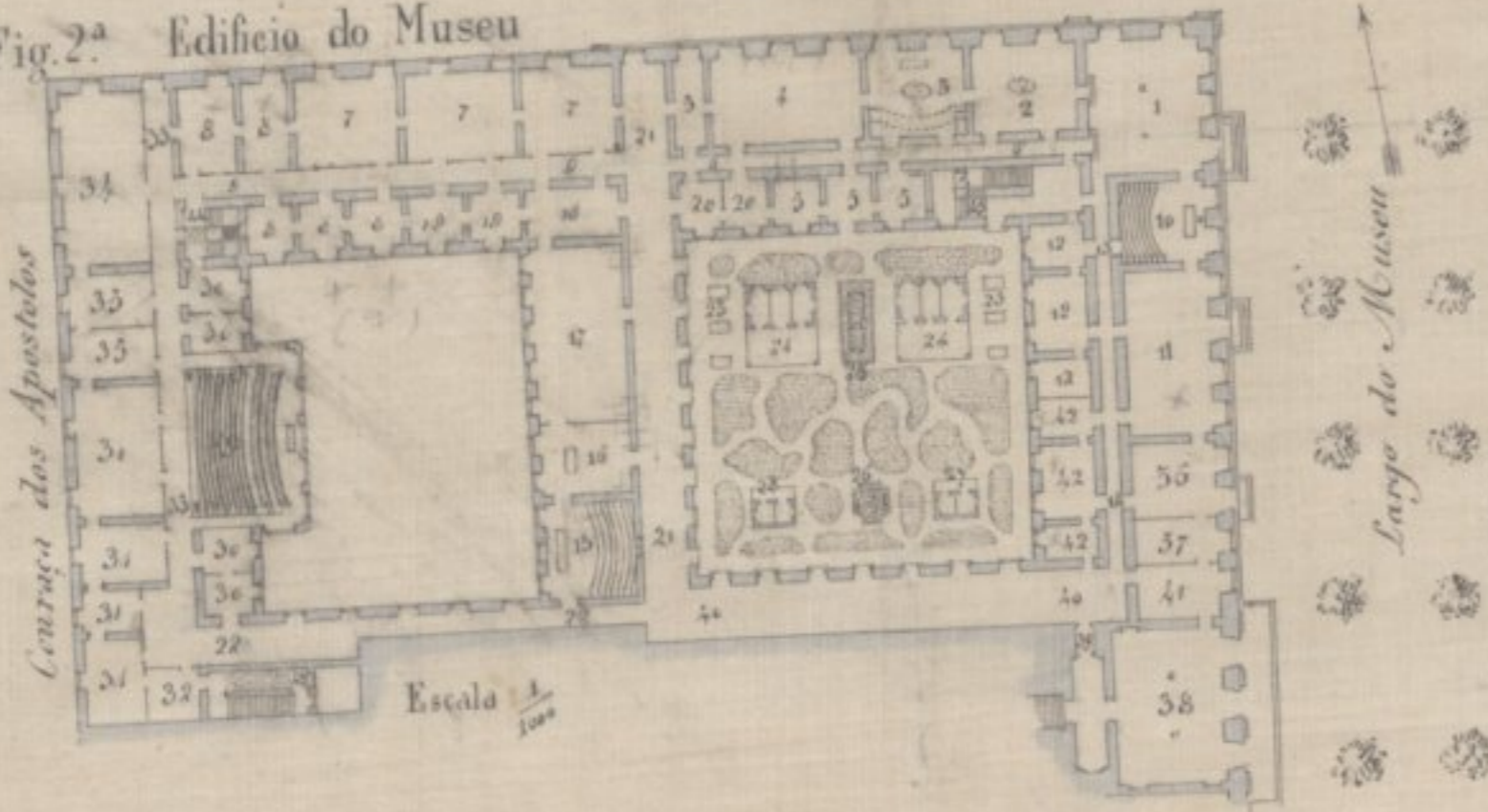


Fig. 1.^a Cerco dos Jesuitas

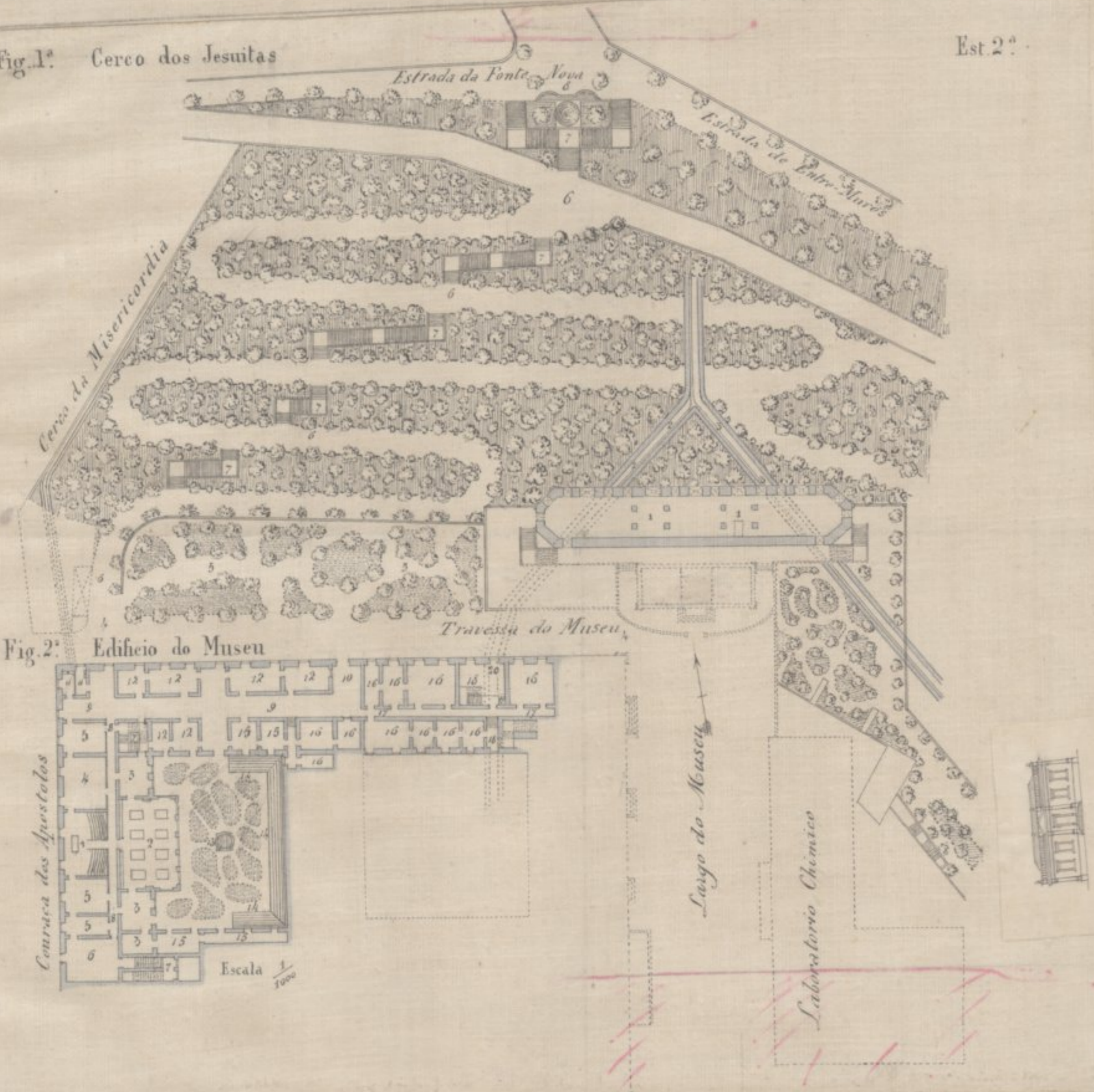
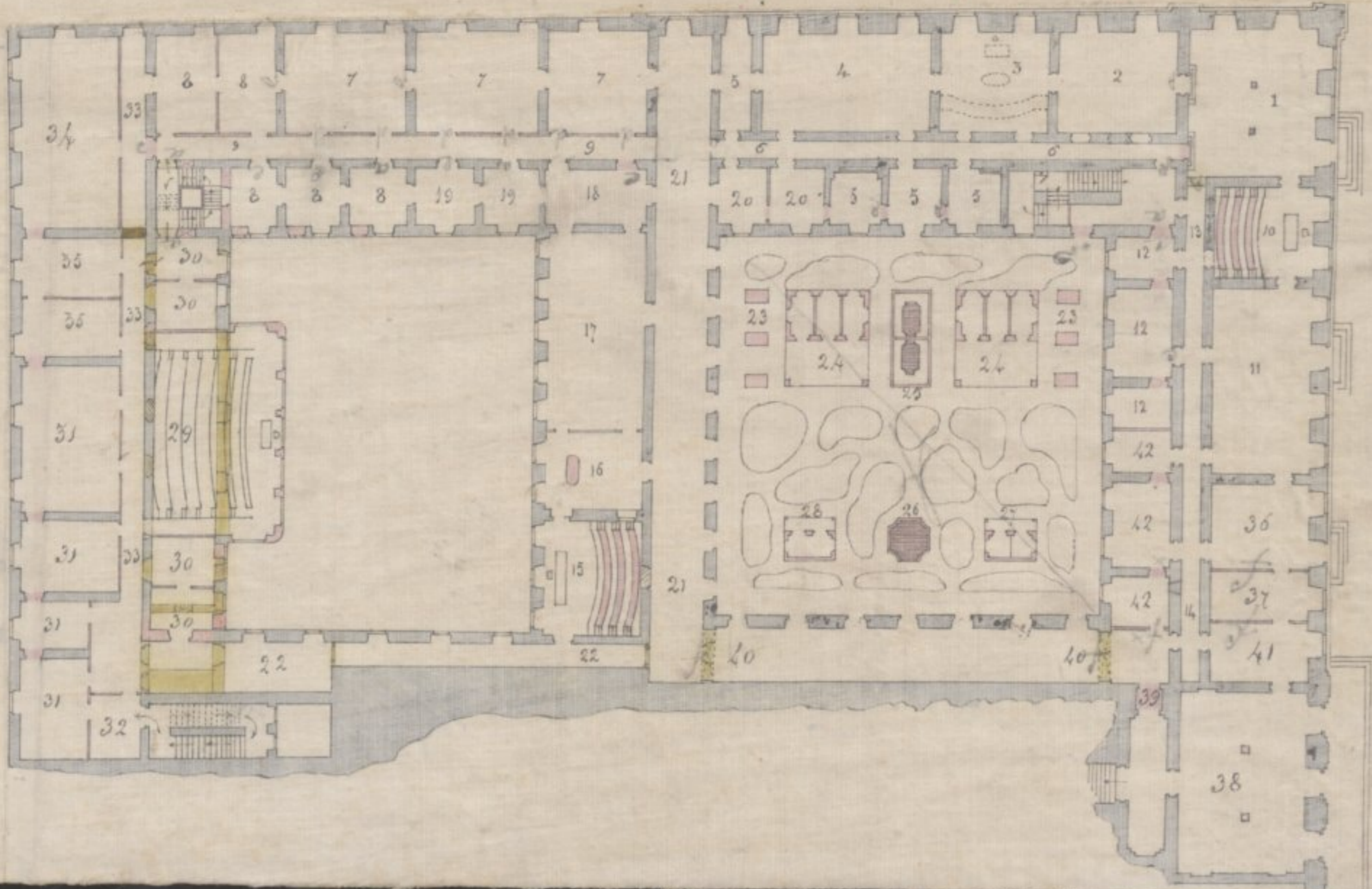
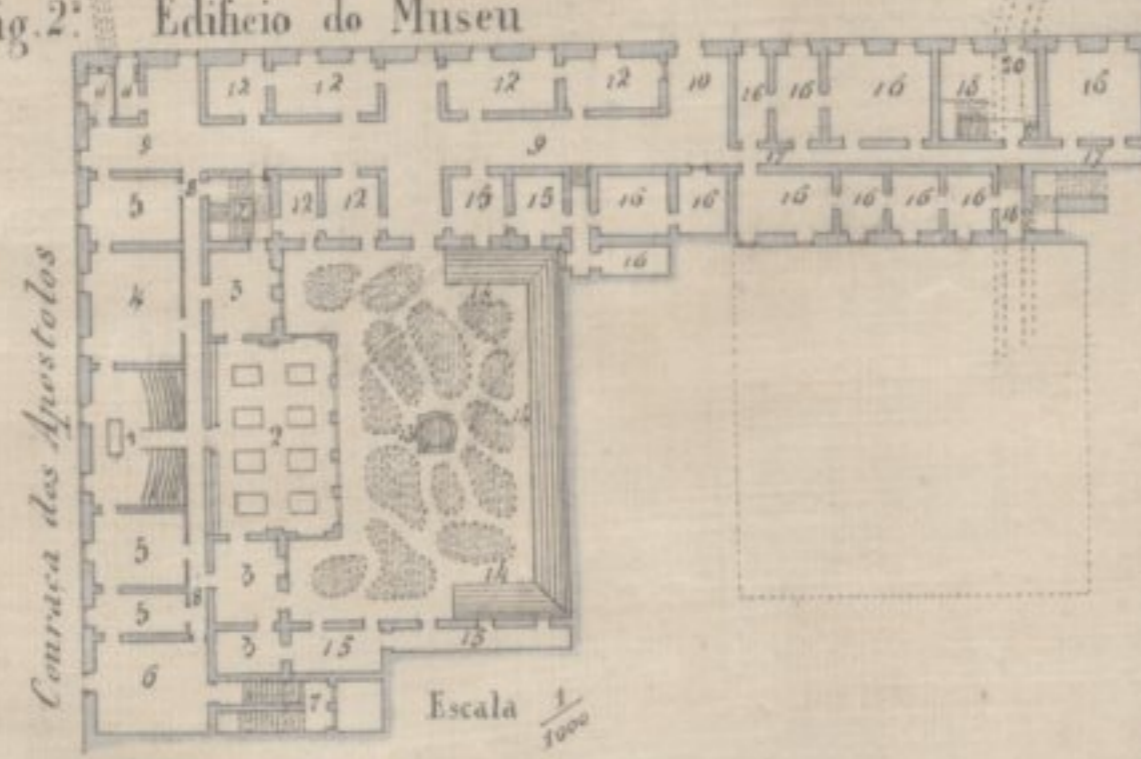
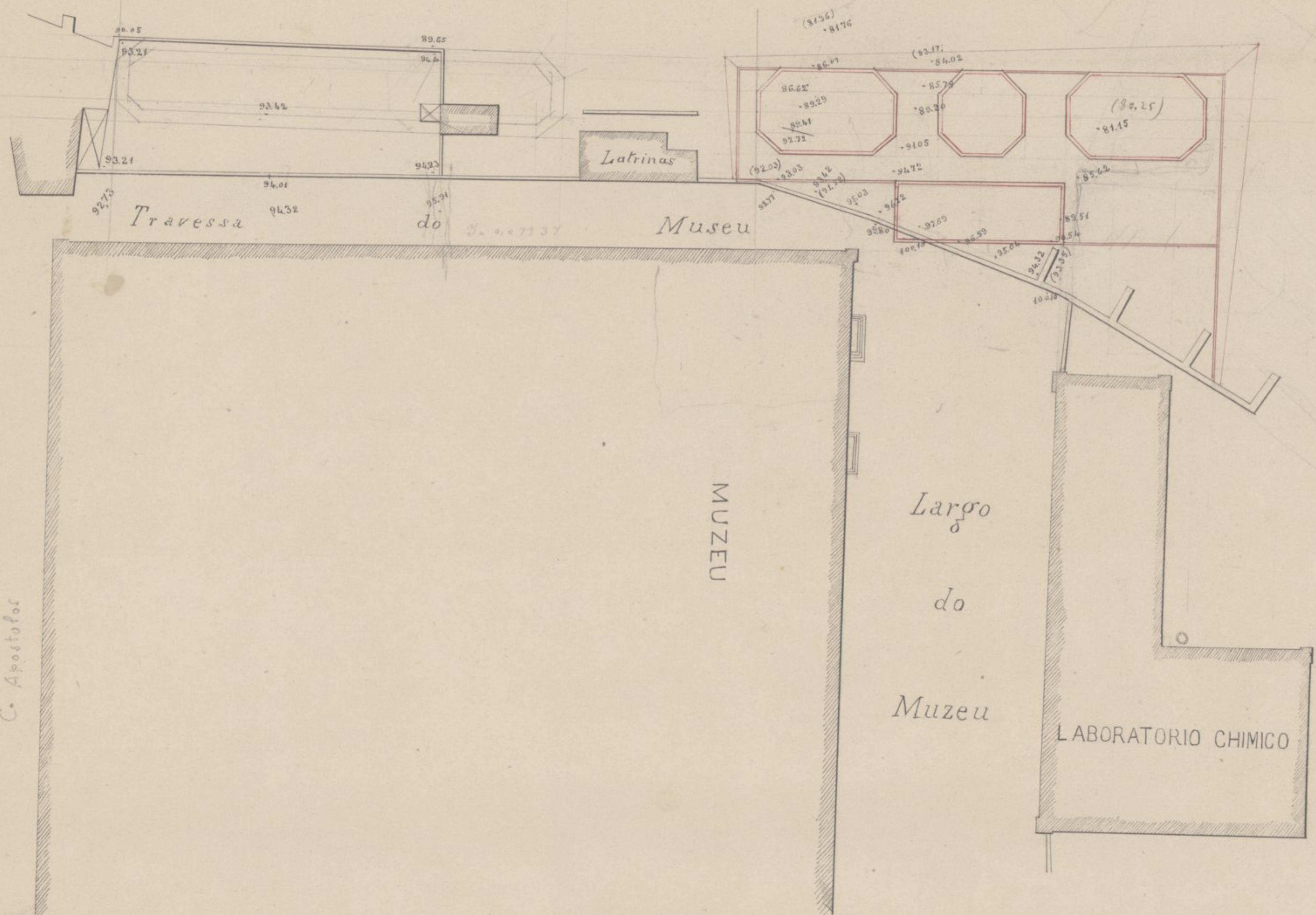


Fig. 2.^a Edifício do Museu





C. Apostolos

Travessa

do

Museu

MUSEU

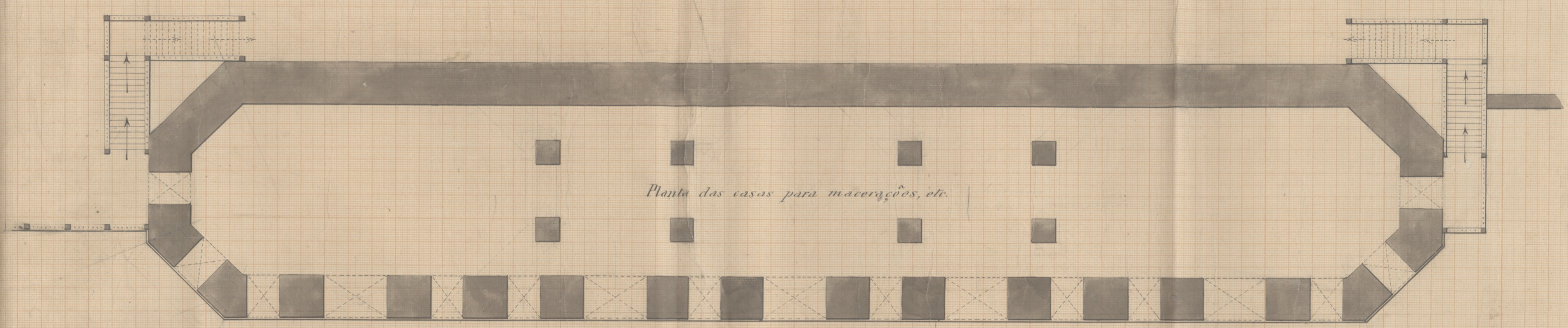
Largo

do

Museu

LABORATORIO CHIMICO

Hospital

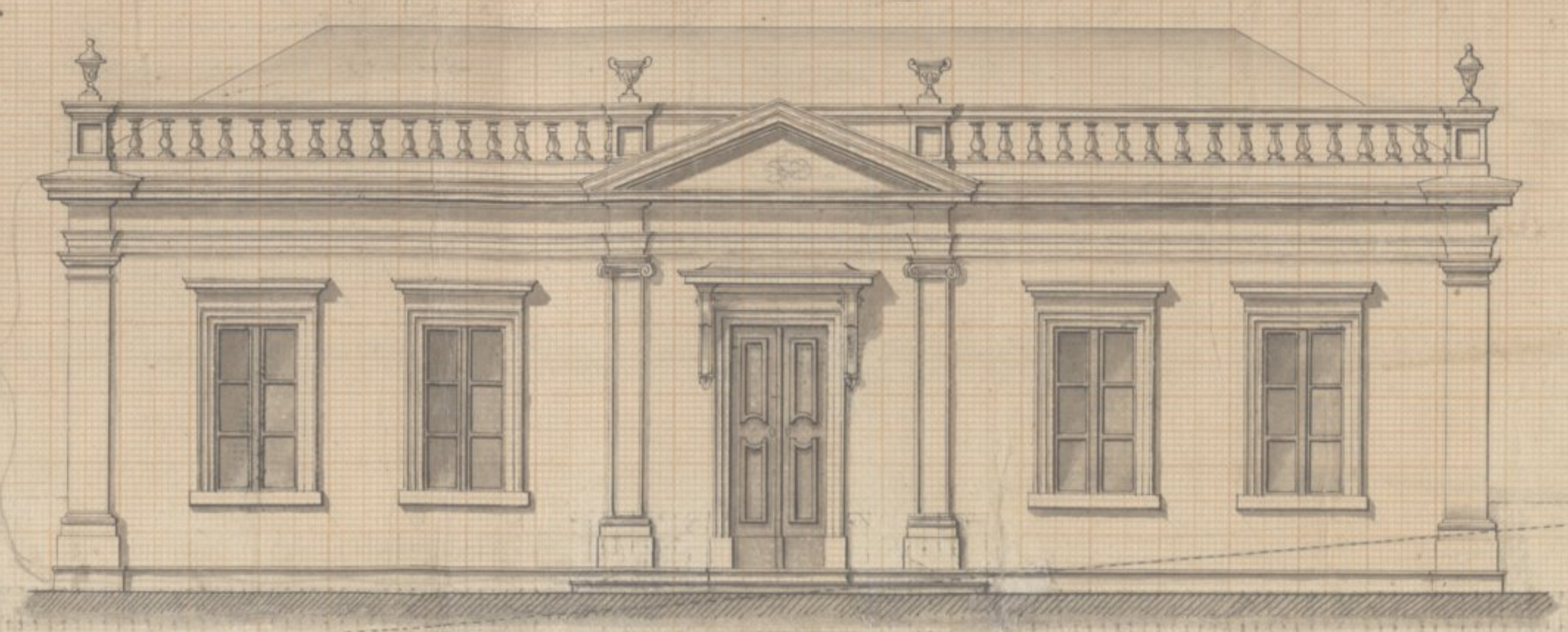


ALÇADO DO SUL



ALÇADO DO SUL

Casa anexa aos pavilhões anatomicos

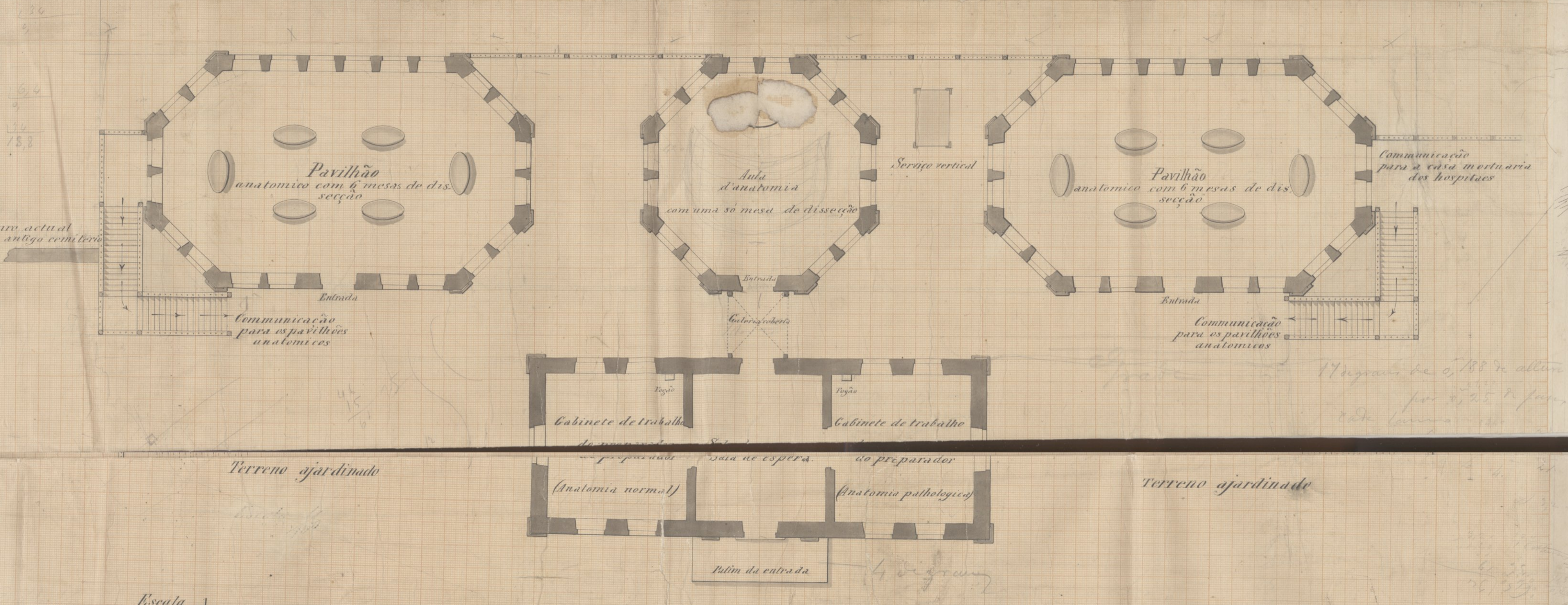


Travessa do Museu

24,80
21,90
7,30
7,30
23,60

57,00
1,560
41,43
20,70

Ver. Planta geral



17 metros de altura
por 2,25 m por
20 m comprimento

Escala 1/100
Novembro, 1 de 1877.



Travessa do Museu

Projecto de Costa Simões.
Desenho de Monteiro.

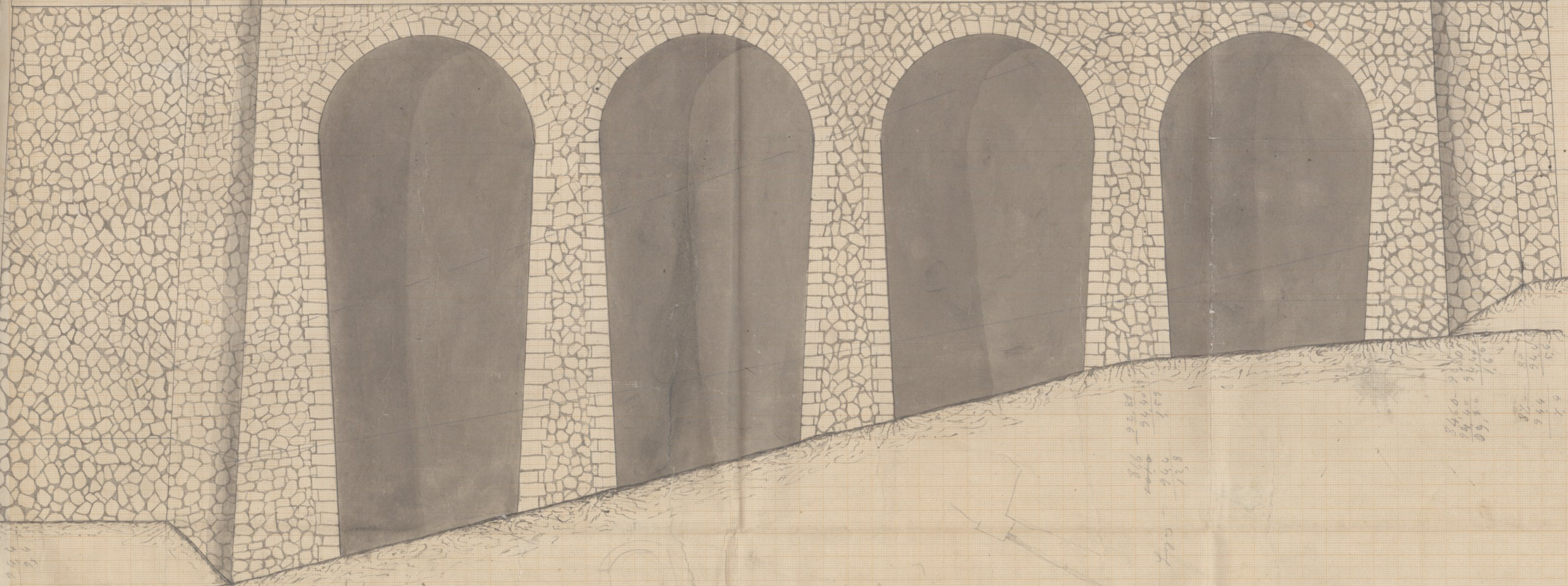
Projecto de pavilhões anatomicos ~

ALÇADO DO NORTE

Aula d'anatomia



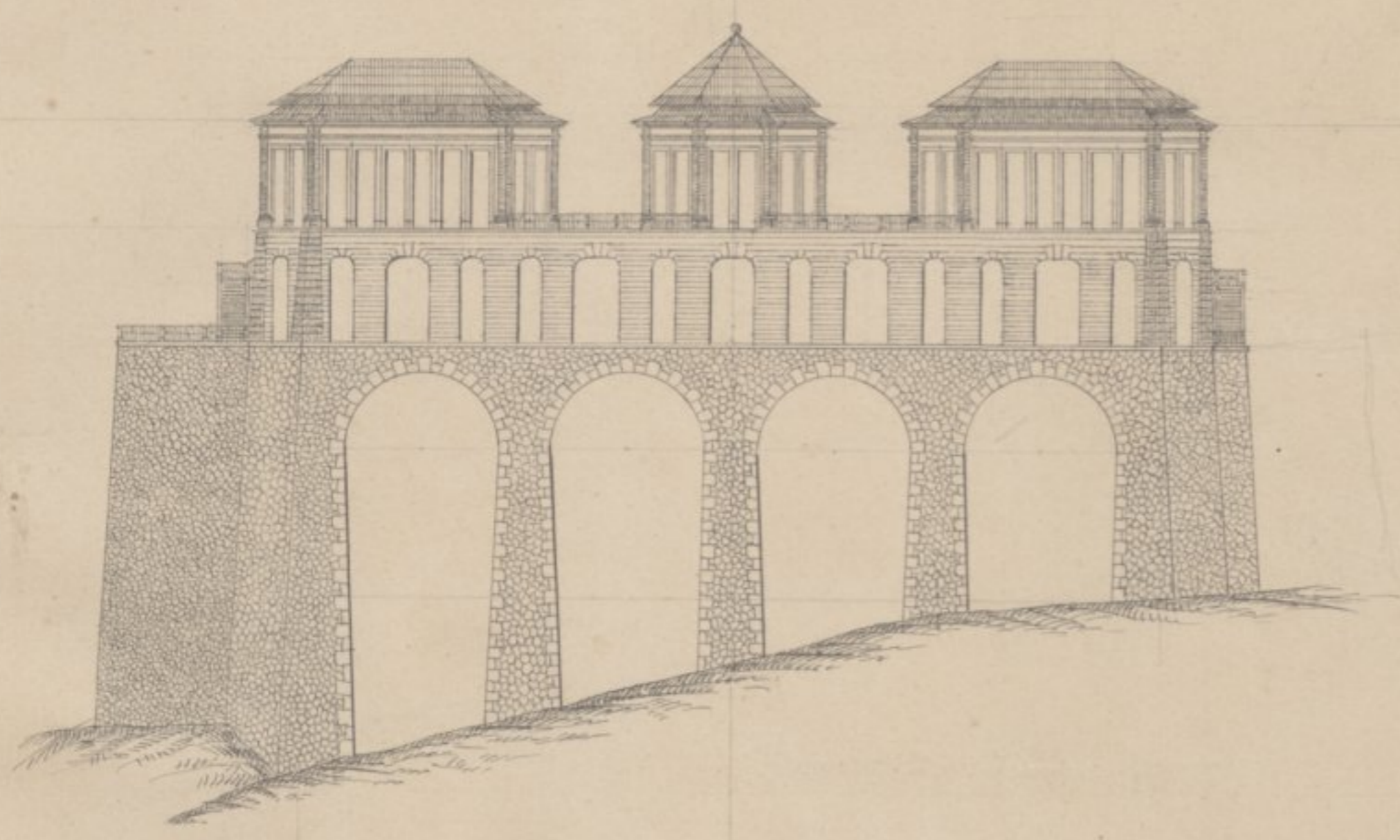
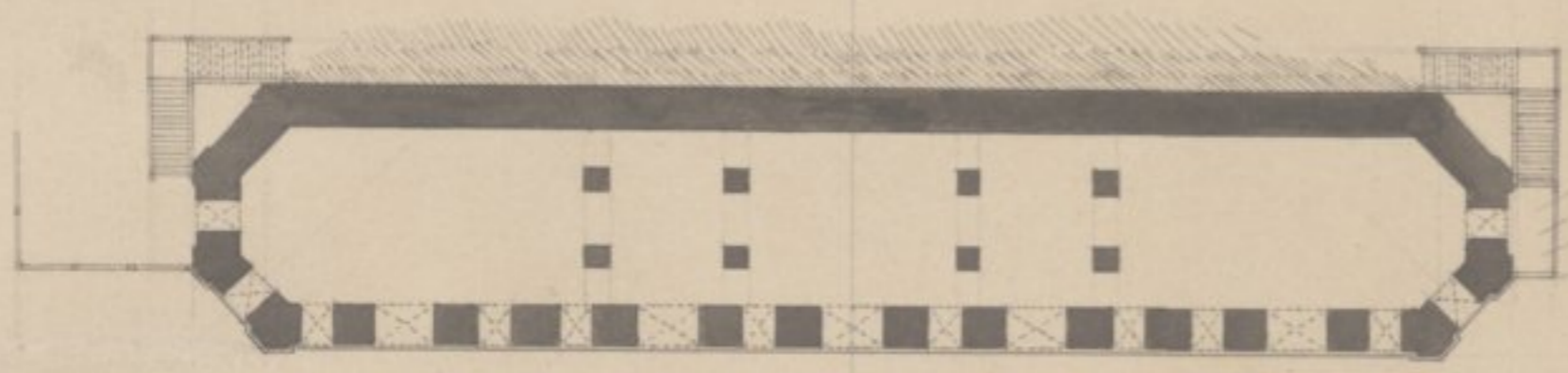
alargados
17 pedras cada
lado
na base etc



816
944
128

840
944
1044
1144
1244
1344
1444
1544
1644
1744
1844
1944
2044
2144
2244
2344
2444
2544
2644
2744
2844
2944
3044

185
195
205
215
225
235
245
255
265
275
285
295
305
315
325
335
345
355
365
375
385
395
405
415
425
435
445
455
465
475
485
495
505
515
525
535
545
555
565
575
585
595
605
615
625
635
645
655
665
675
685
695
705
715
725
735
745
755
765
775
785
795
805
815
825
835
845
855
865
875
885
895
905
915
925
935
945
955
965
975
985
995



← Lado Norte



← Lado Sur

