

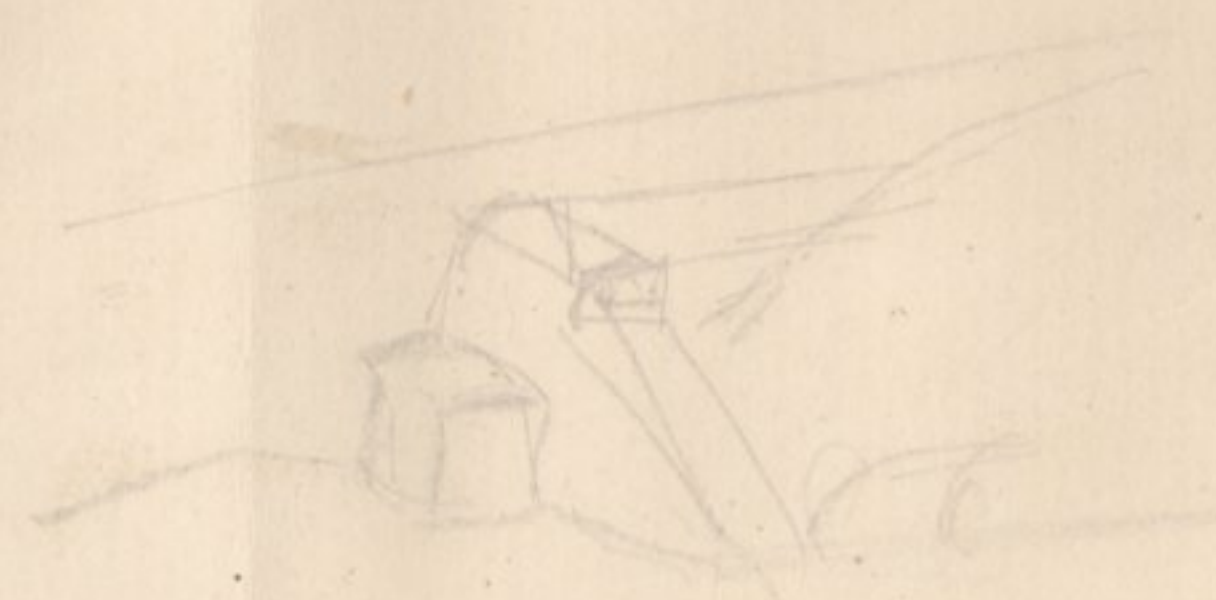
Nº 20

Planta

Escala = 1:100

22850000  
180

400  
365



Corte longitudinal segundo a linha AB  
Escala = 1:100

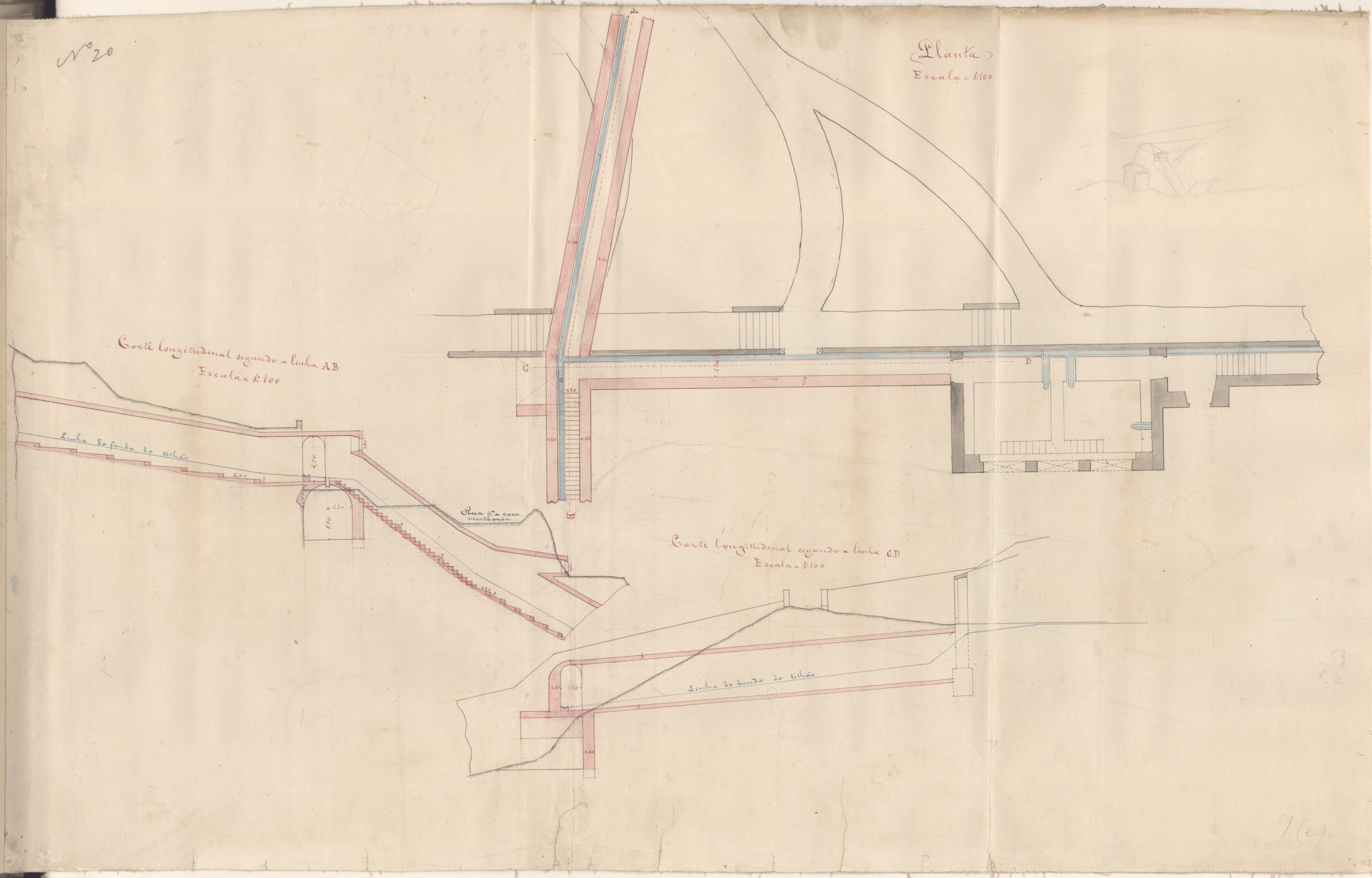
Linha do fundo do Kithar

Placa p. a casa  
moldada

Corte longitudinal segundo a linha CD  
Escala = 1:100

Linha do fundo do Kithar

7(e)



Nº 21

8,52  
110

Hospital da Universidade de Coimbra

Plantas

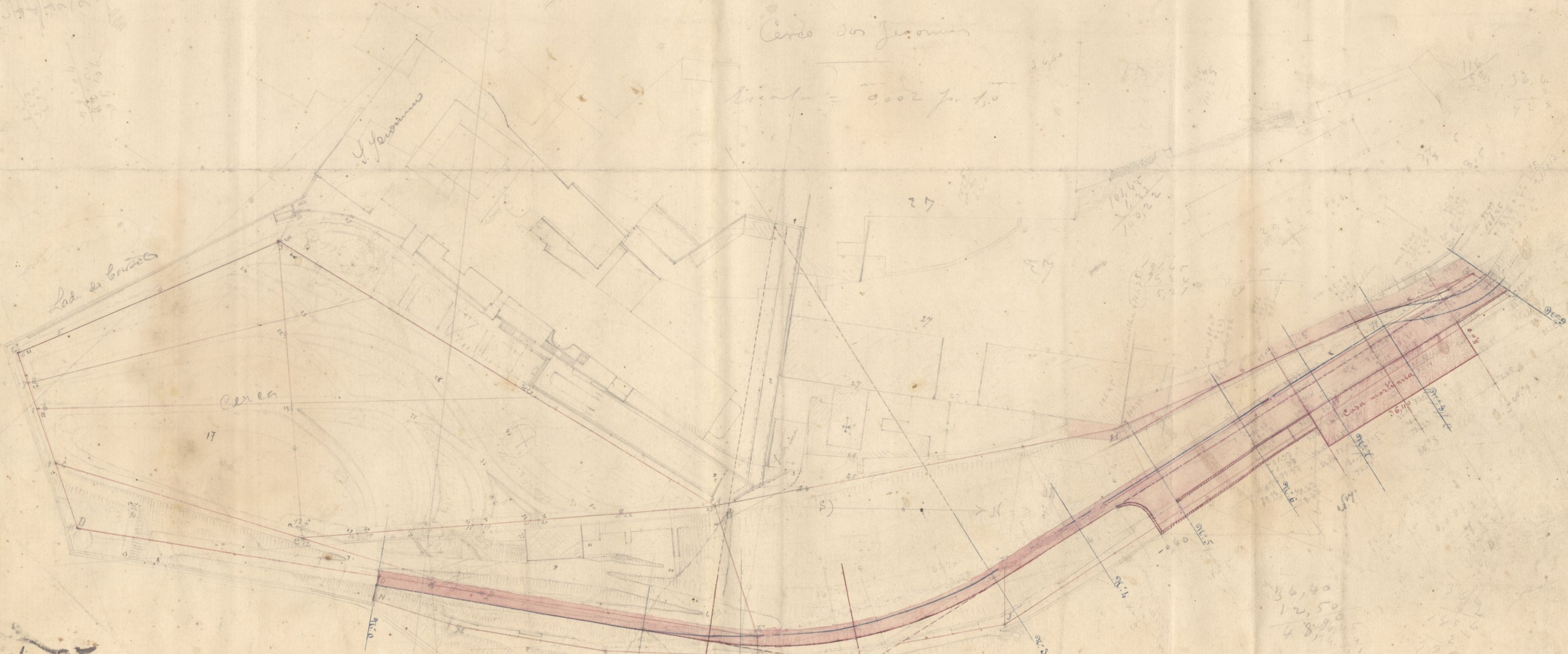
Planta do terreno da Universidade

Cerca dos Jeronimos

Escala = 1:1000



92,99  
5,00  
87,99



A = 138,30  
T = 33,00  
R = 97,10  
angulo = 140°  
g = 5,52  
d = 1,33  
d = 0,35

36,40  
12,50  
48,90

Casa mortuaria  
76,14

M (A)

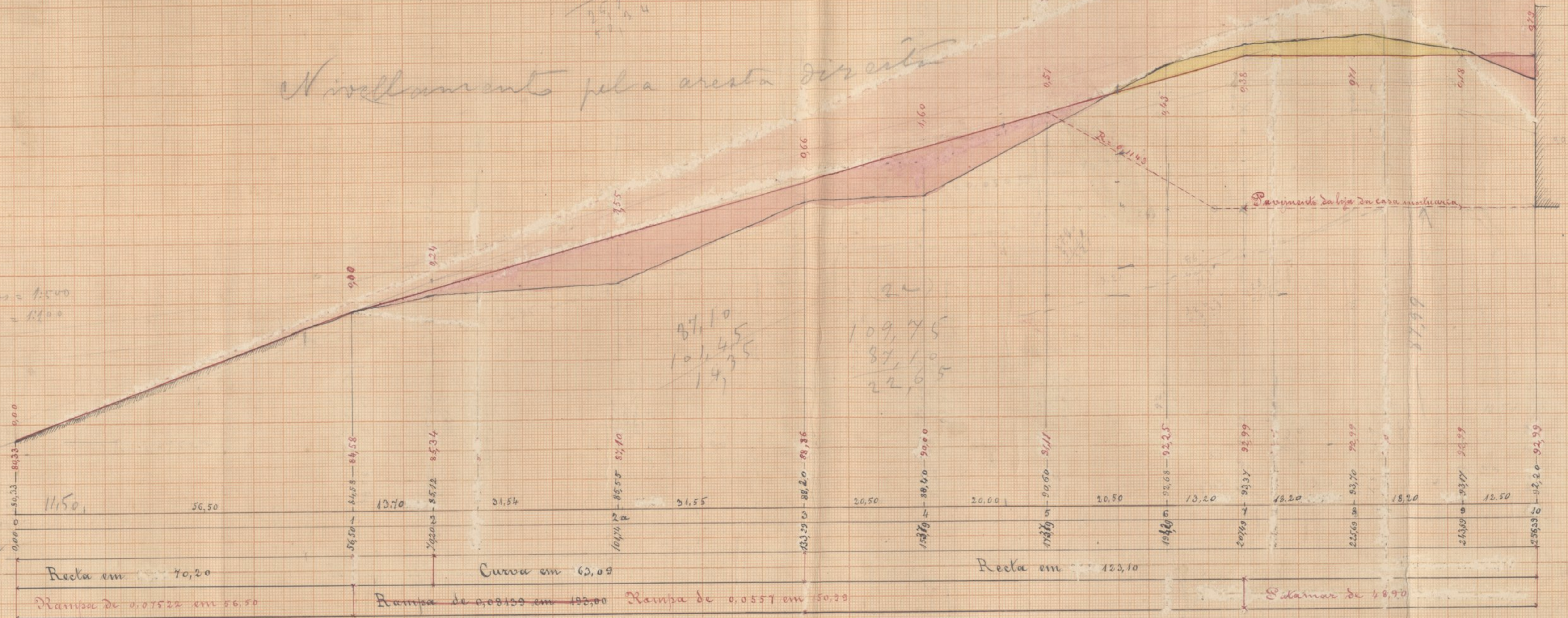
22

92,20  
2,20  
96,19  
101,45  
5,26

# Nivelamento pela cresta direita

Escala  
Para o terreno em 1:500  
Para o alinhamento em 1:100

N. dos pontos  
Distancias a origem  
Alinhamentos  
Declividades



87,10  
101,45  
14,35

109,75  
87,10  
22,65

92,99  
5,00  
87,99  
94,40  
6,41

# Seções de arvores na Cruzeira = 1:100



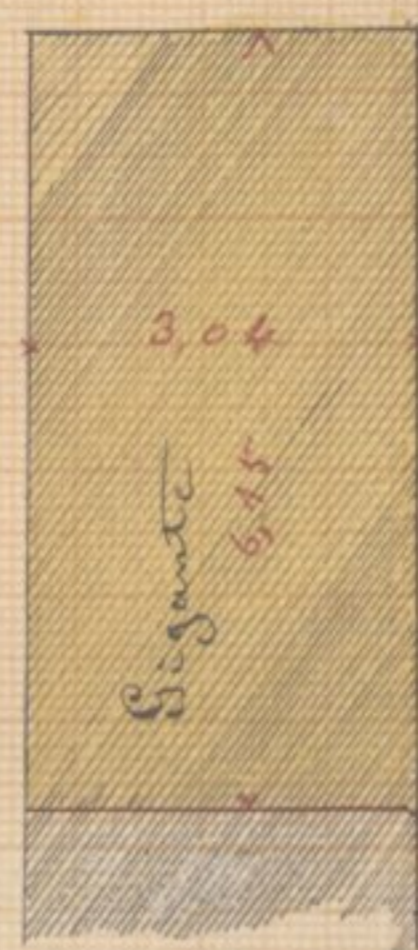
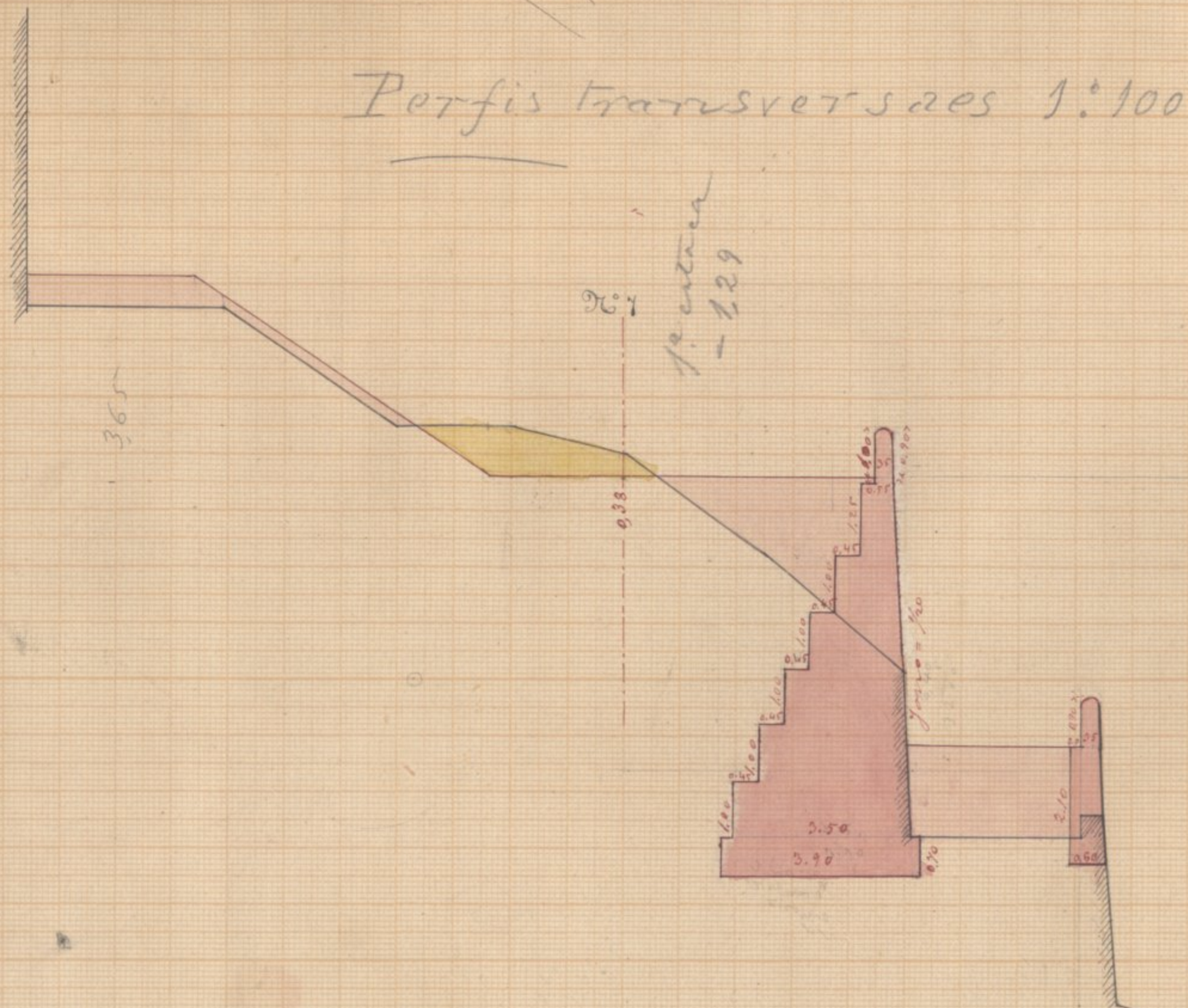
1,6  
18,4  
16,0  
15,2  
2,2

qui

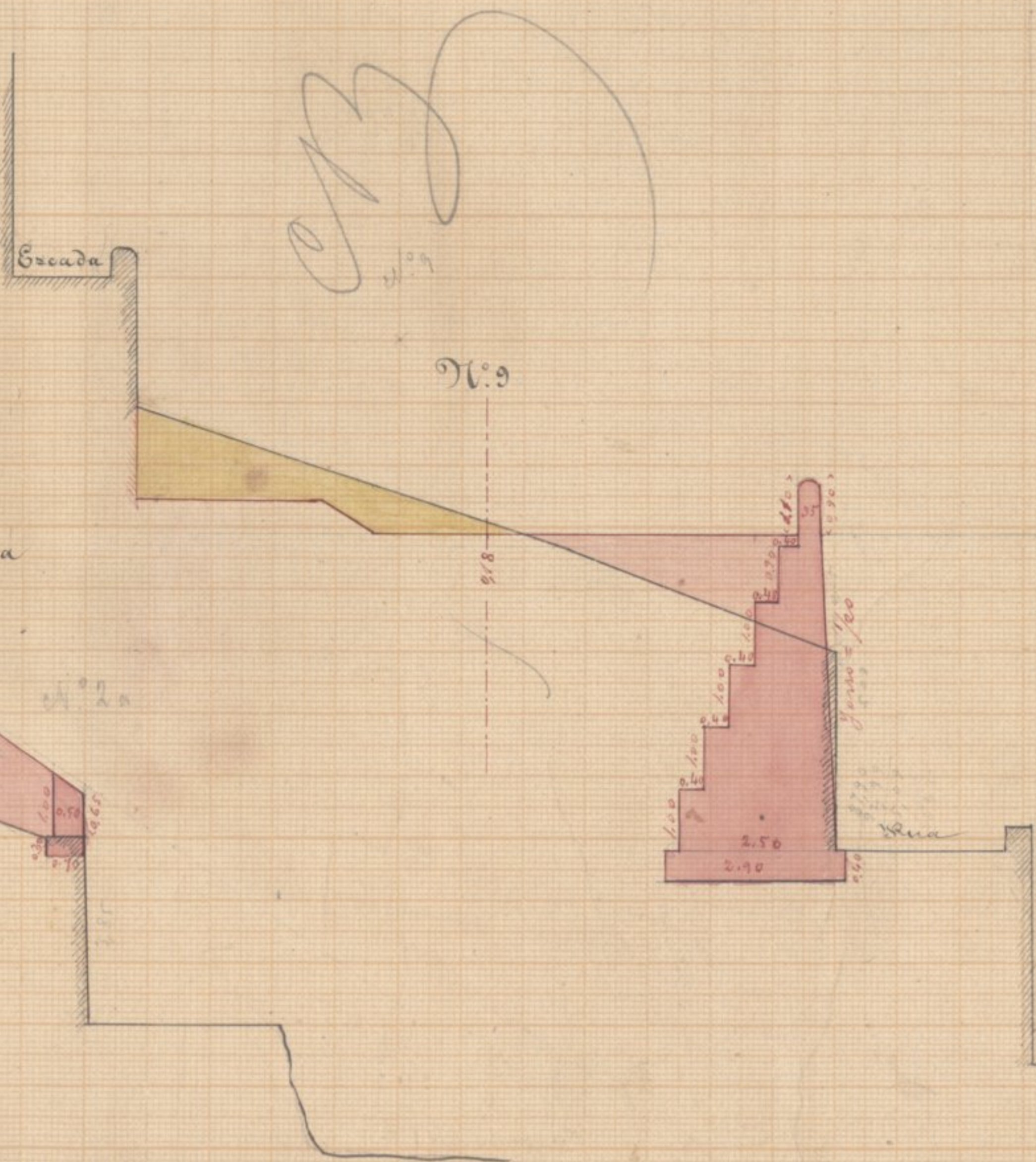
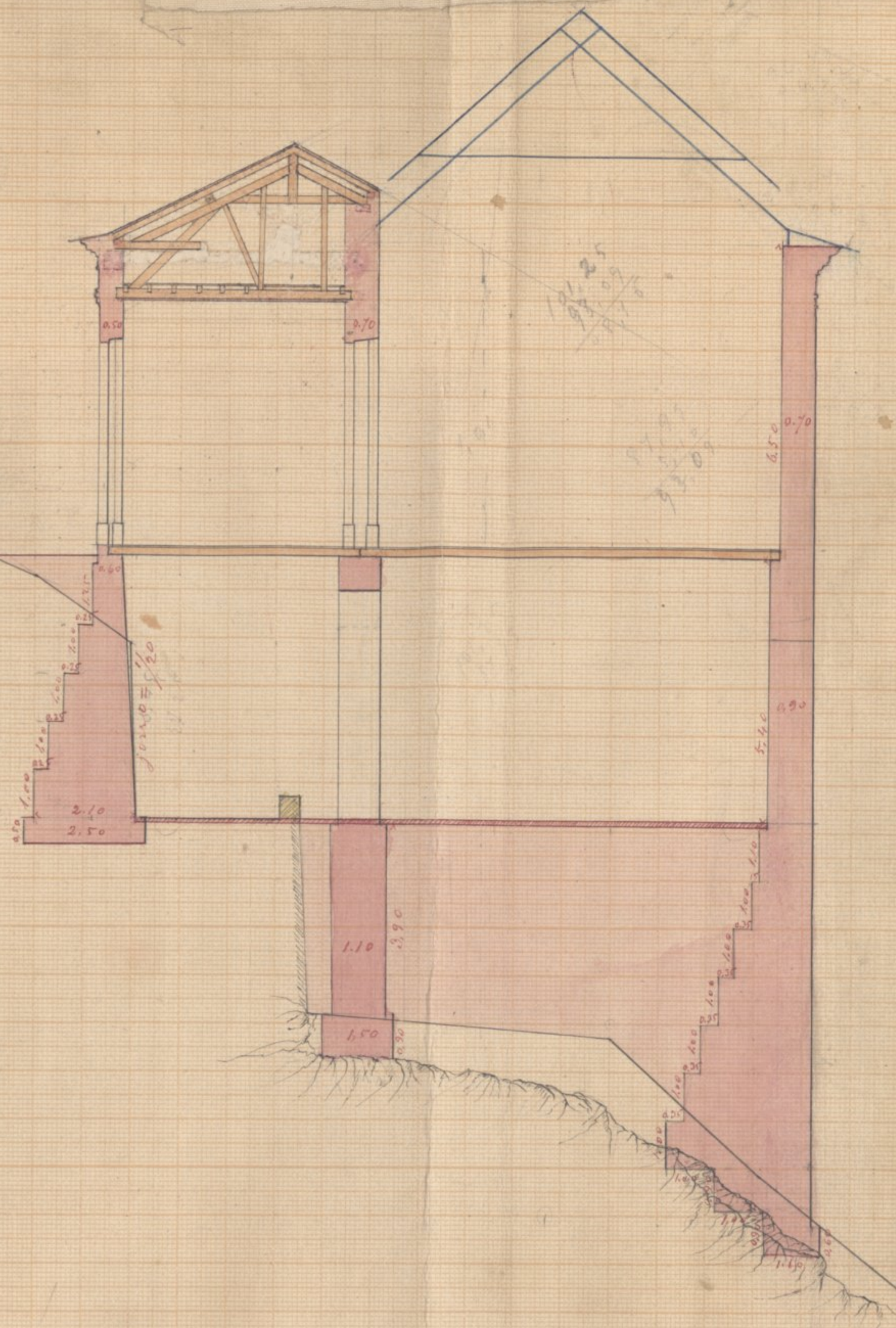
7 (c)

Nº 23

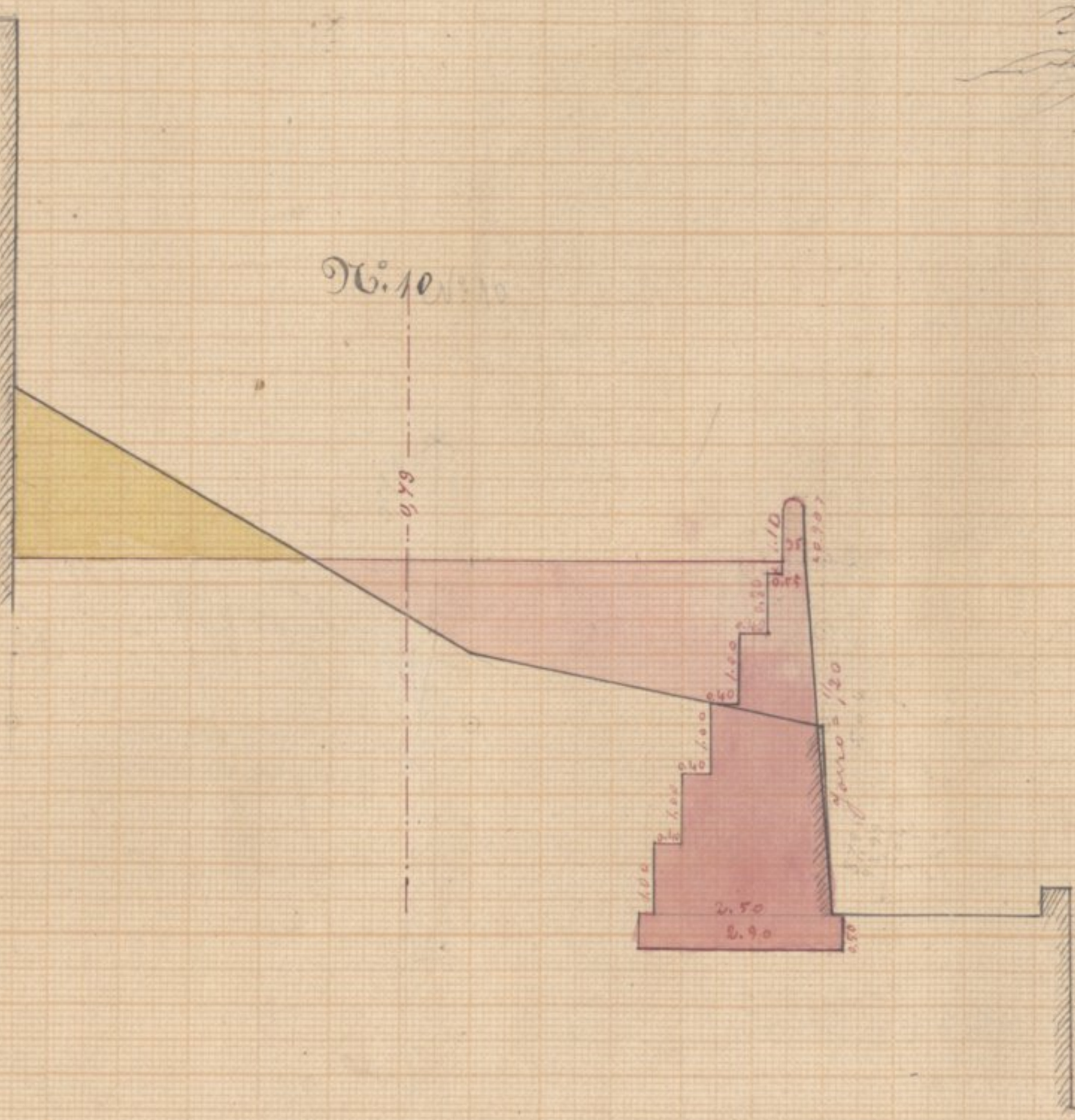
Perfis transversaes 1:100



N.º 8



N.º 10



70