



AZORES

# SAN MIGUEL

SURVEYED BY CAPT. A. E. VIDAL, R.N.

1844

H.W. F. & C. XII. 30°. Rise 6 feet.

1 Fathoms line  
200  
1000

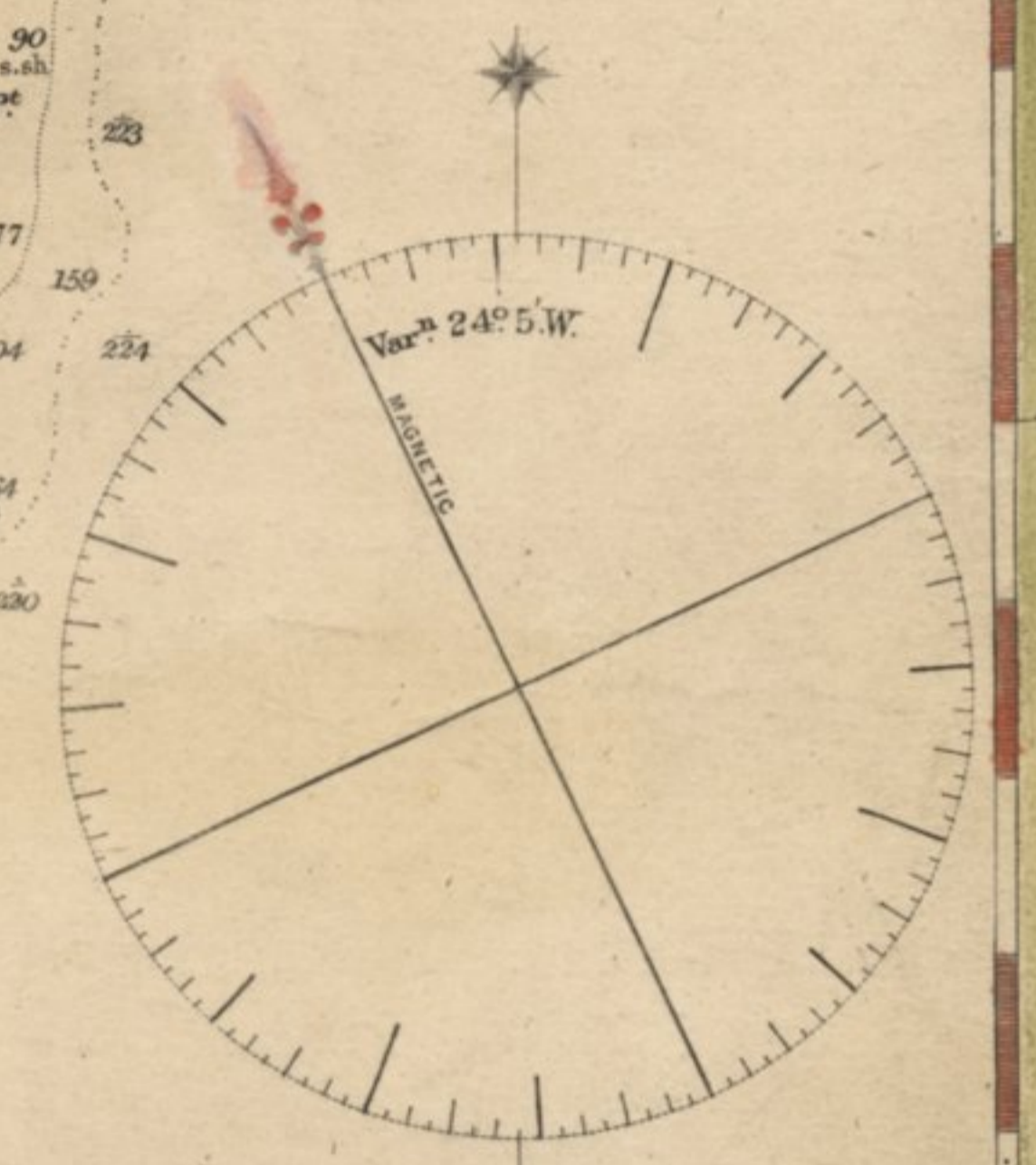
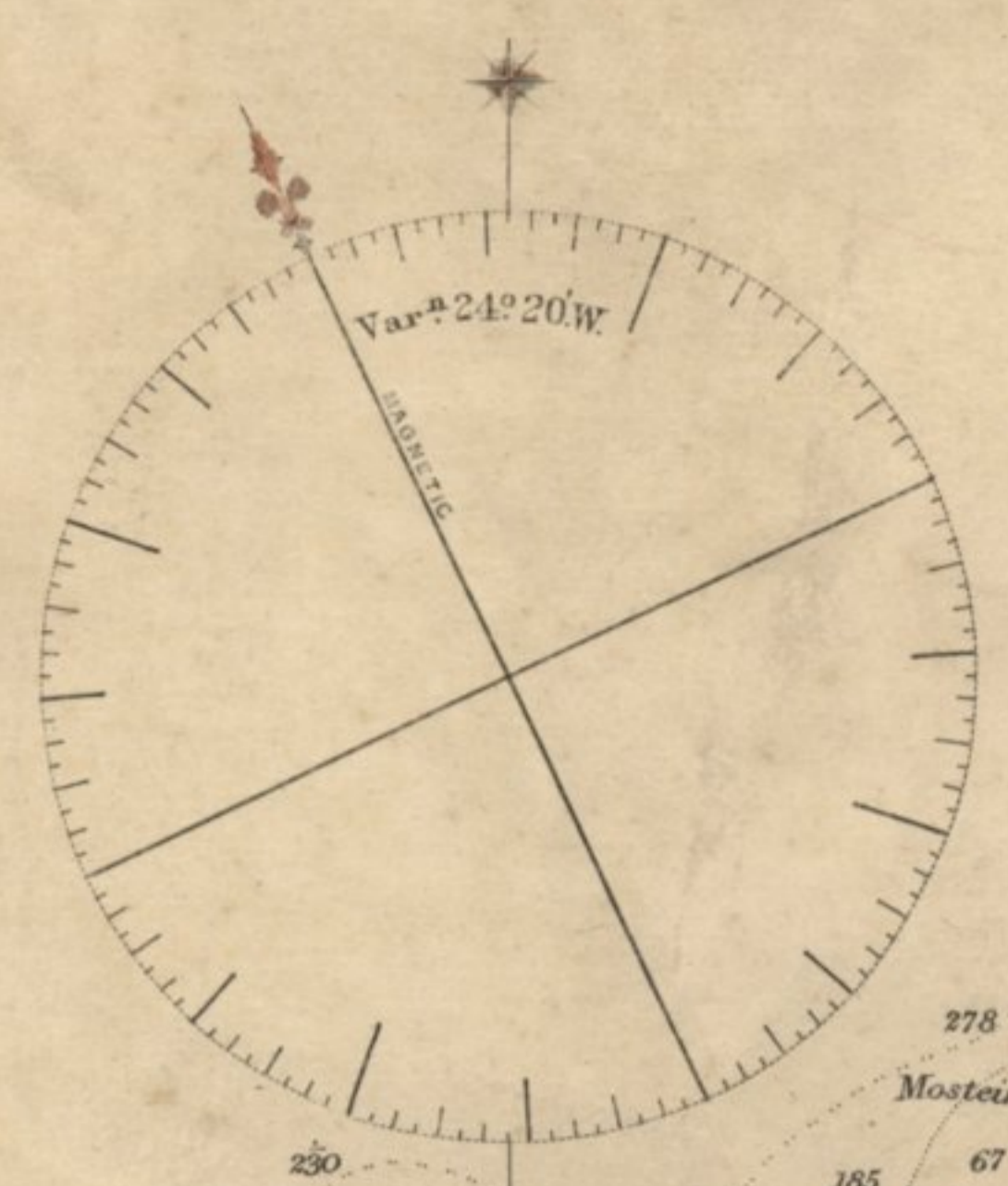
col. cor. g. gravel, r. mud, r. rock, s. sand, sh. shells, st. stones.

SOUNDINGS IN FATHOMS

Bearings to the Views are Magnetic

Figures on the Land show the Height in Feet.

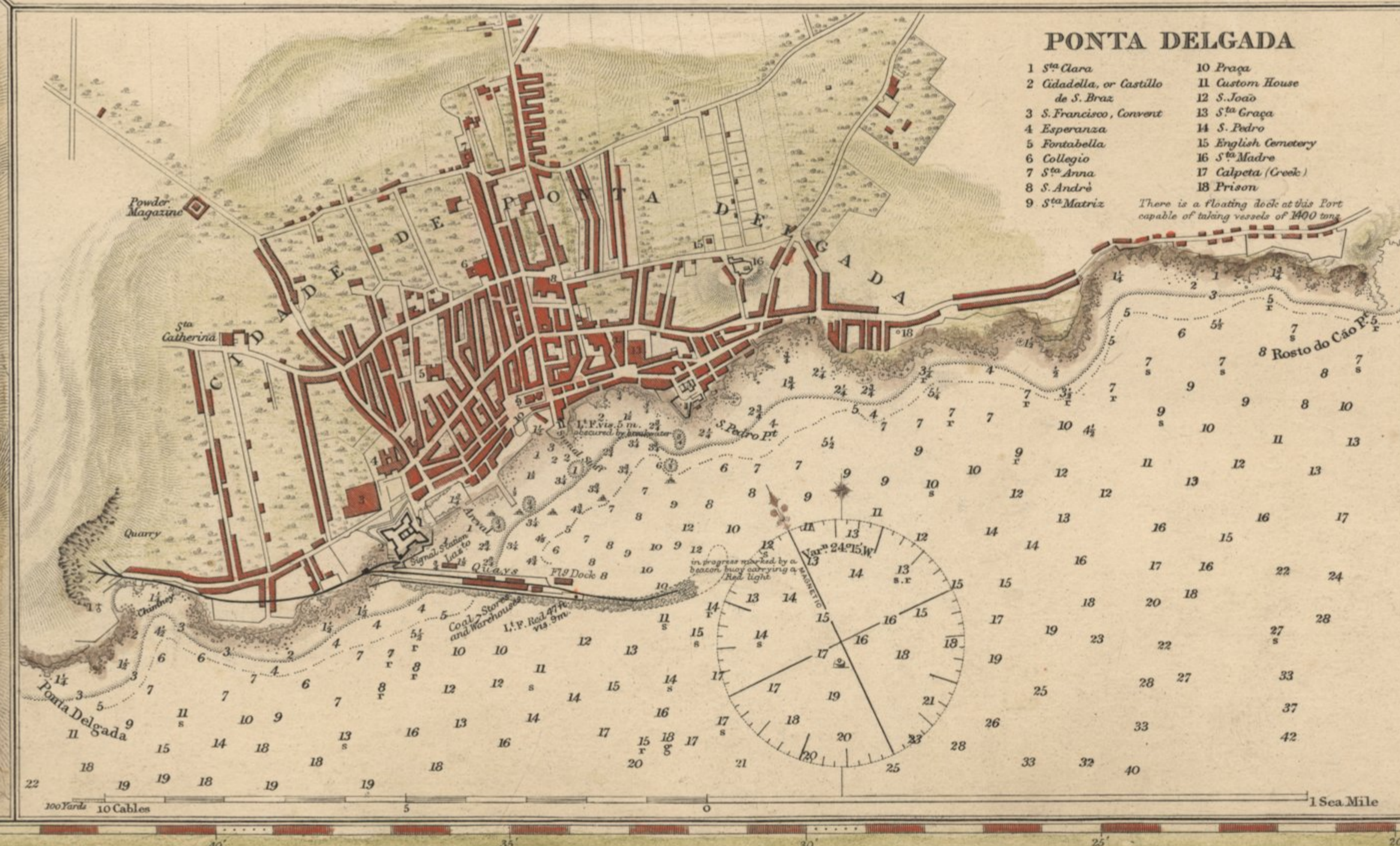
Magnetic Variation in 1833  
decreasing about 3' annually



## CALDEIRA DAS SETE CIDADES

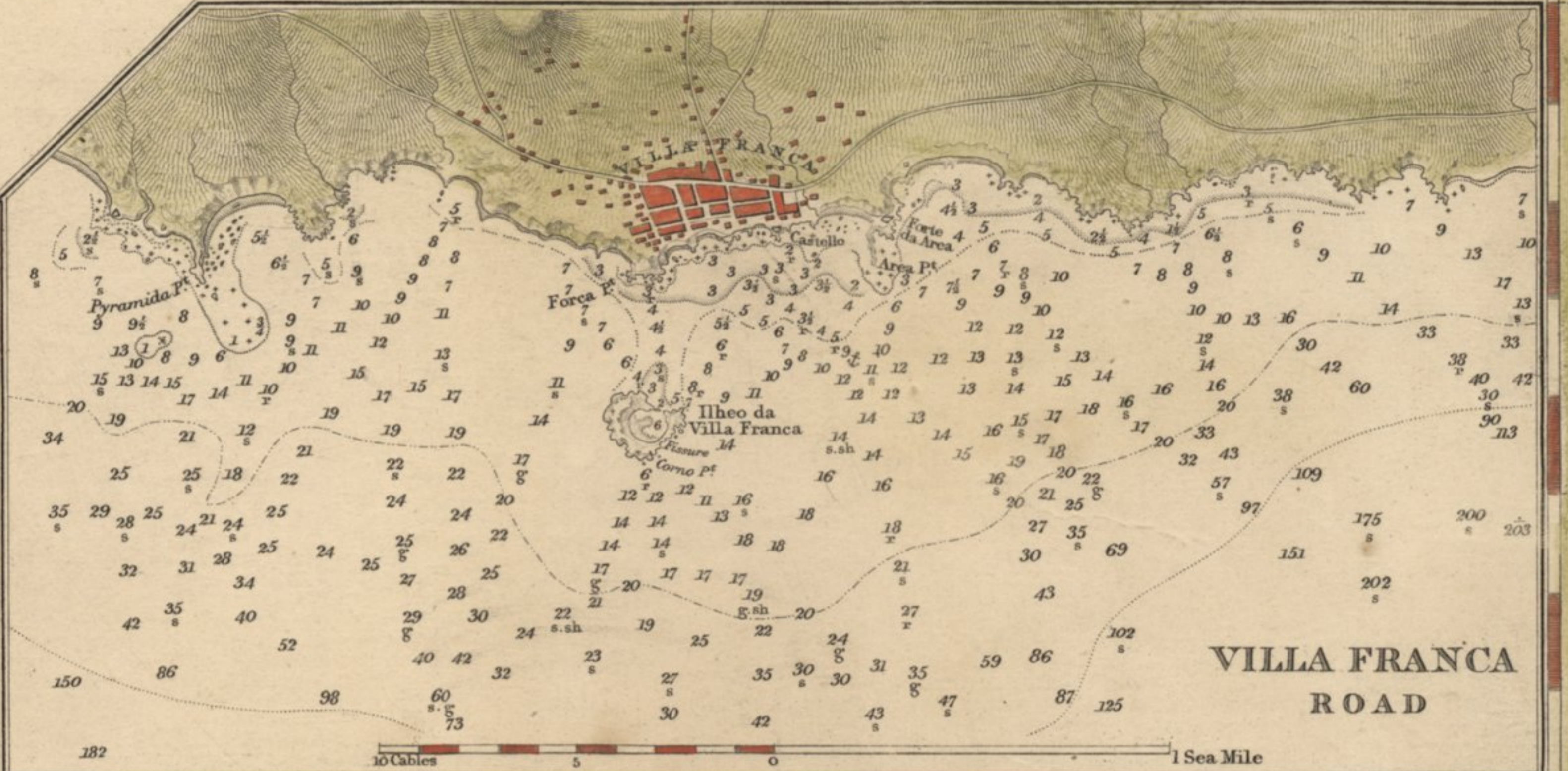


## PONTA DELGADA

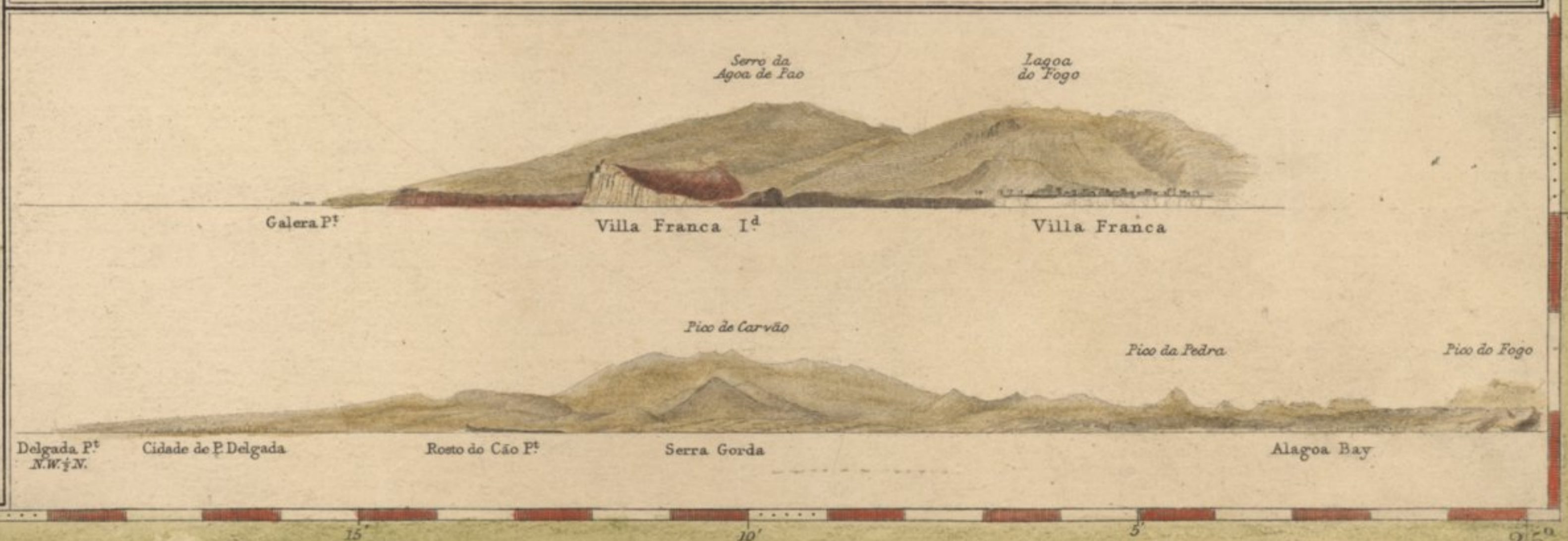


- 1 5<sup>th</sup> Clara
- 2 Caladella, or Castillo
- 3 S. Francisco, Convent
- 4 Kapuruzawa
- 5 Bussanella
- 6 Collegio
- 7 5<sup>th</sup> Anna
- 8 S. Andre
- 9 5<sup>th</sup> Maria
- 10 Praya
- 11 Custom House
- 12 S. Joao
- 13 5<sup>th</sup> Grupo
- 14 S. Pedro
- 15 English Cemetery
- 16 5<sup>th</sup> Madre
- 17 Galpeta (Greek)
- 18 Priory
- 19 Rotta do Cão

There is a floating dock at this Port capable of taking vessels of 3600 tons.



## VILLA FRANCA ROAD



75.000

