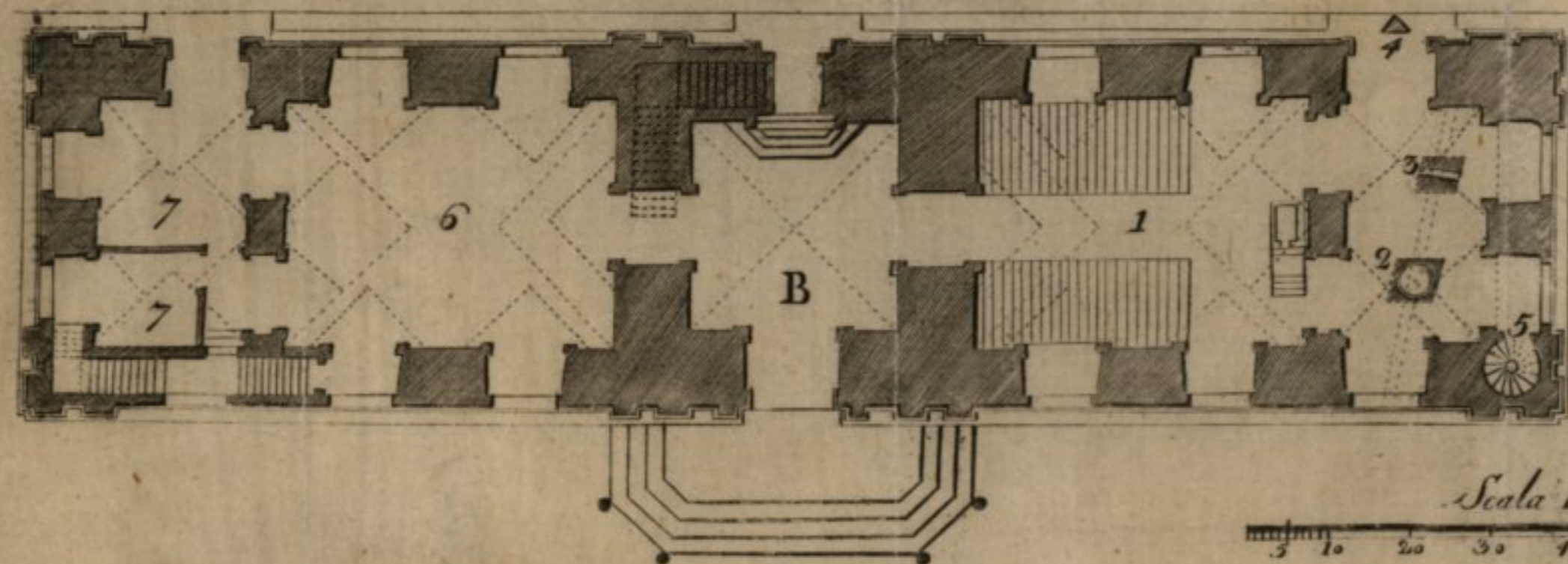
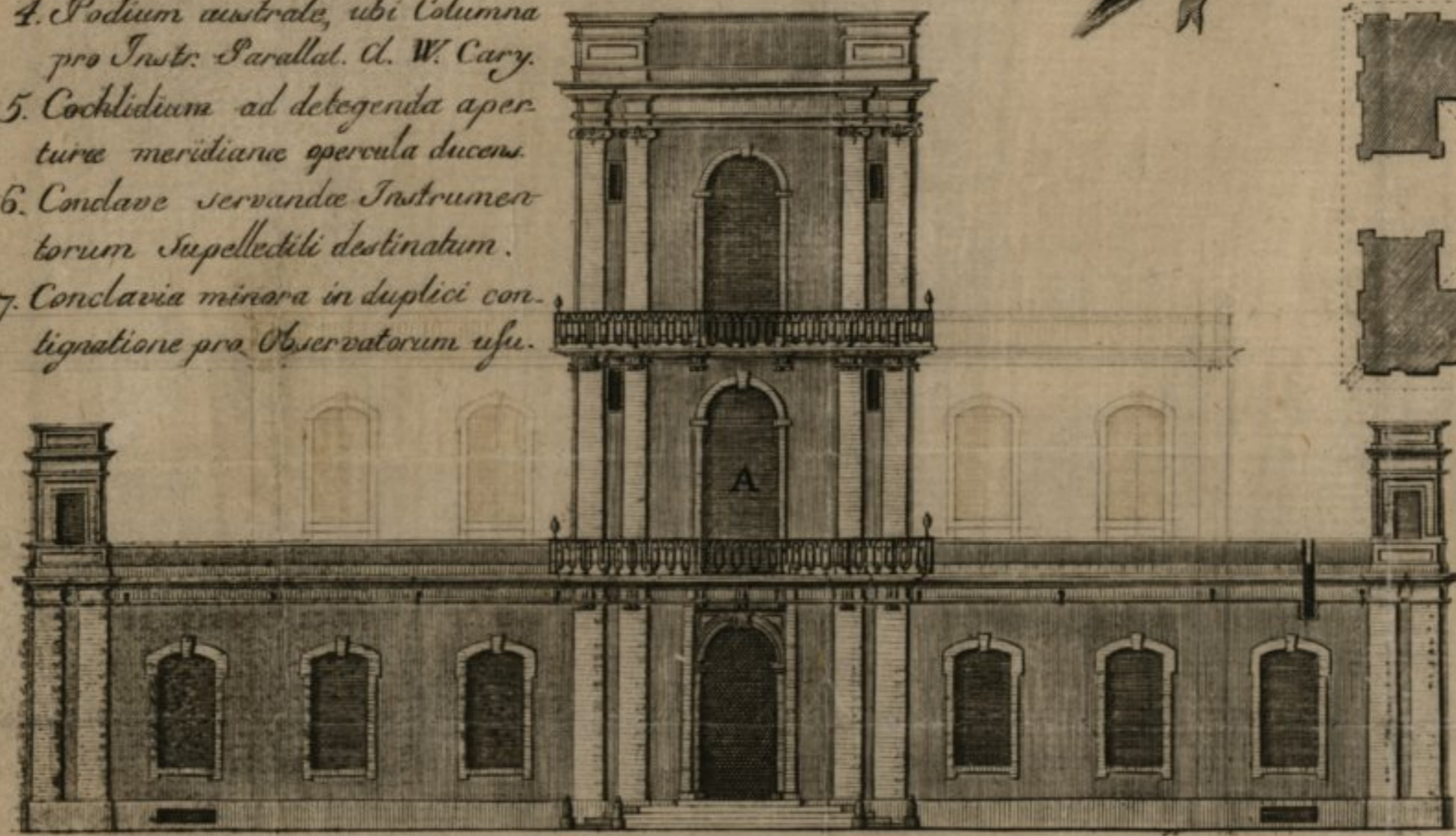


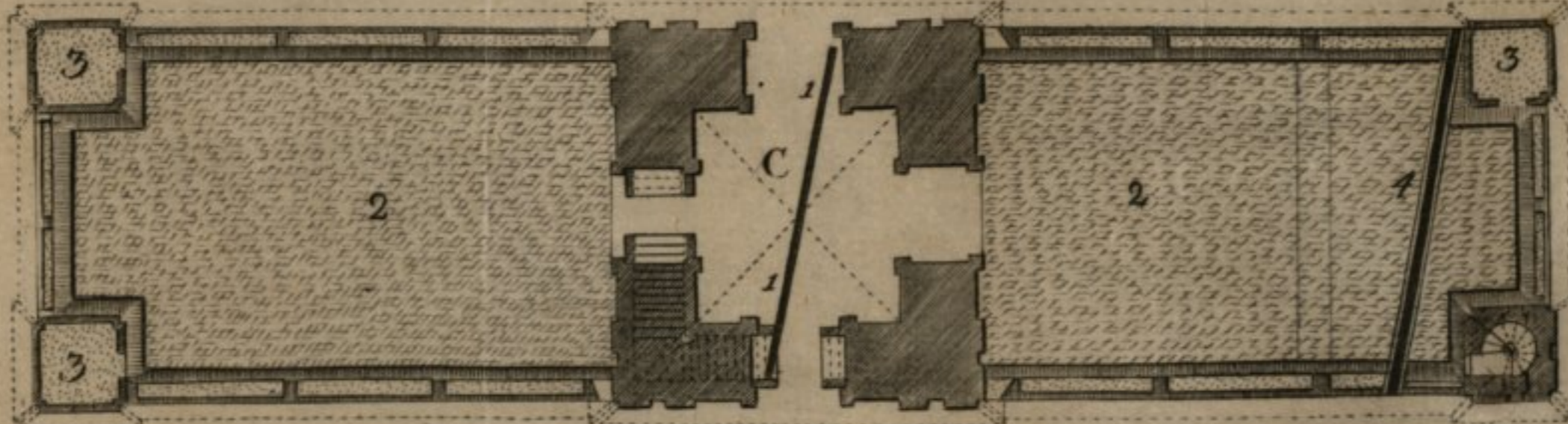
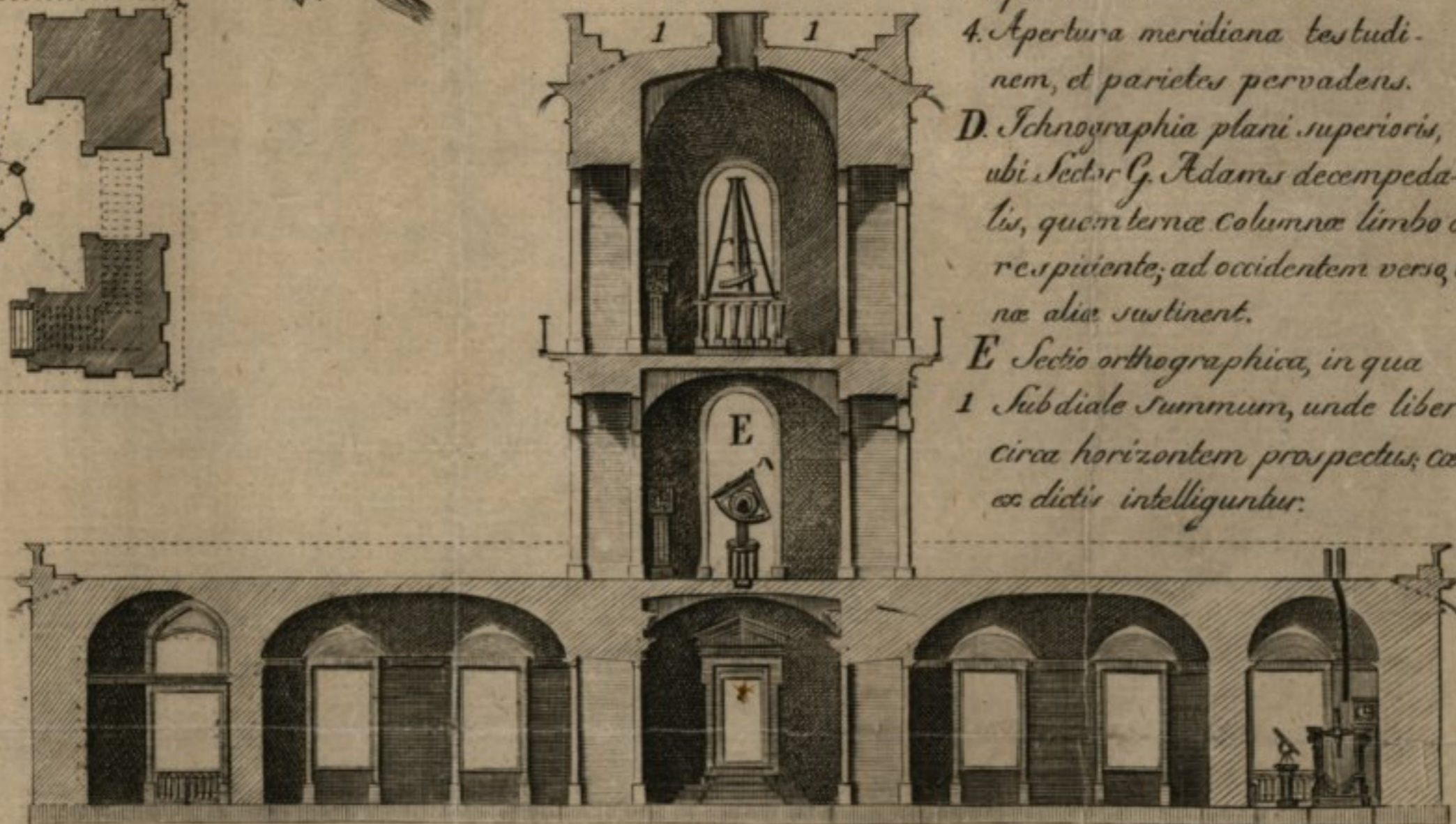
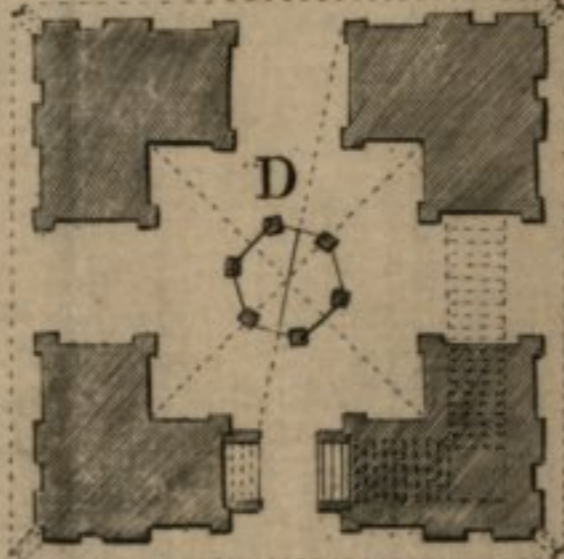
A. Frontis orthographia e regione Archigymnasii Academici.

B. Ichthyographia prioris plani. In quo

1. Gymnasium Astronomicum.
2. Fundamentum Quadrantis Murali destinatum, ubi interim Quadrans mobilis tripodatis, opus Troughtoni absolutissimum.
3. Fundamentum pro Telescopio Meridiano achromatico Cel. Dollondi.
4. Podium australe, ubi Columna pro Instr. Parallel. G. W. Cary.
5. Cochlidium ad detegenda apertura meridiana opercula ducens.
6. Conclavia servandae Instrumentorum Suppellectili destinatum.
7. Conclavia minora in duplici conlignatione pro Observatorum usu.



OBSERVATORIUM CONIMBRICENSE
 Academiam Maderitate Ex. ac R. D. D. Francisco Raphaelle de Castro
 Esc. Comitibus Residenciaibus, A Regis Consilio, S. E. P. Hispan. Principali,
 Anno MDC. XCII. constructum.



C. Ichthyographia alterius plani, ubi Specula communis. In qua

1. Filum metallicum tenuissimum in canaliculo lapideo secundum meridiani ductum, ad excipiendam Solis imaginem per foramen laminae ad incumbam fenestram 20 palmos altam ferruminata transmissam.
2. Subdialia hinc inde Observatoribus patentia.
3. Specula minores.
4. Apertura meridiana testudinem, et parietes pervadens.

D. Ichthyographia plani superioris, ubi Sect. G. Adams decompedatis, quom terna Columnae limbo orbis respiciente, ad occidentem versus, ternae aliae sustinent.

E. Sectio orthographica, in qua
 1. Subdiale summum, unde liber circa horizontem prospectus, caetera ex dictis intelliguntur.

Scala 100 palmorum
 0 10 20 30 40 50 60 70 80 90 100

Curante Josepho Monteiro da Rocha.