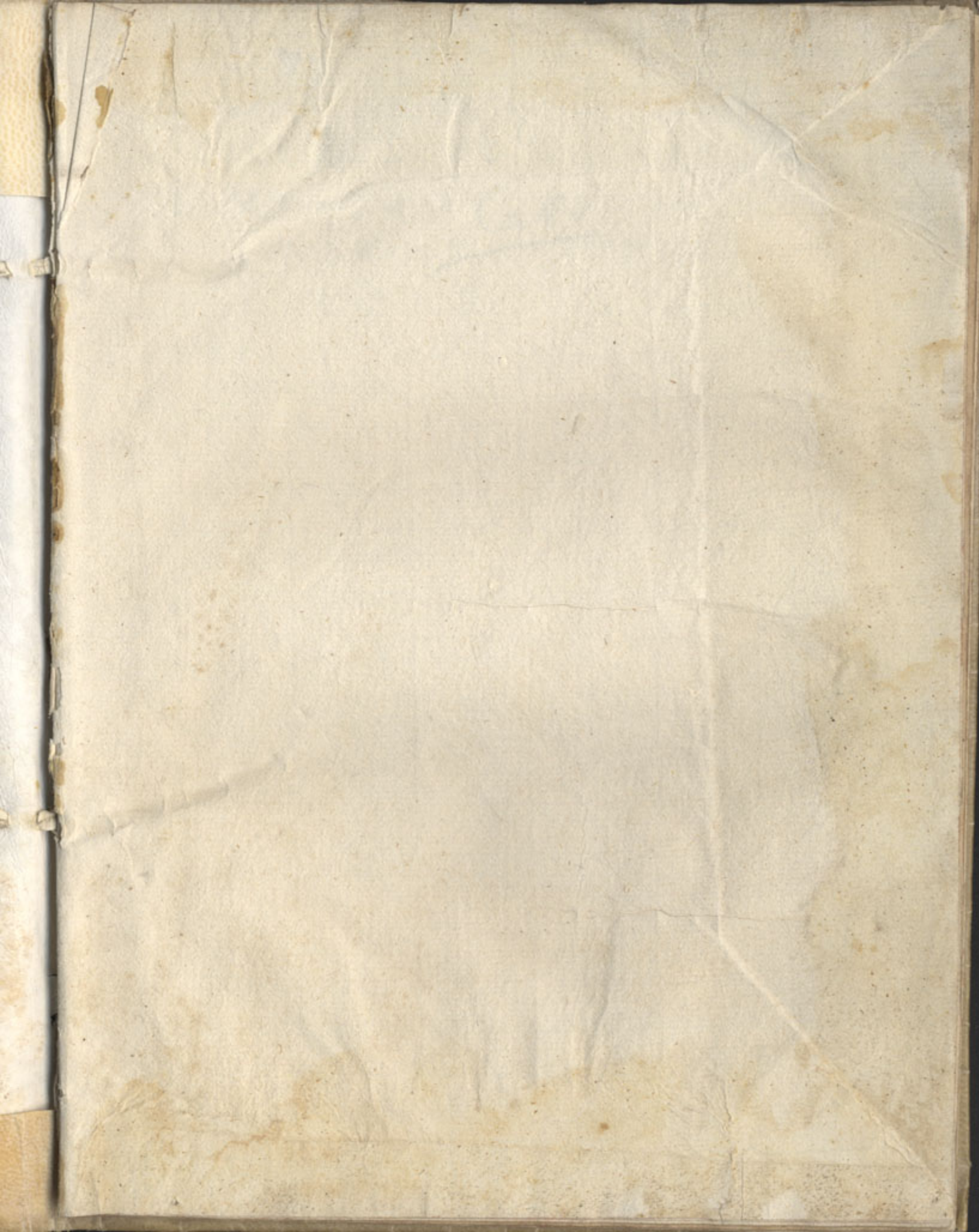


M.I. 64

Chor^o 2^o a. d.
Superi^o

M.I.
64



EDVARDI LVPI

LVSITANI CIVIS OLISIPONENSIS,
In Metropolitana eiusdem vrbs Ecclesia
beneficiarij & Musices præfecti

OPVSCVLA:

NATALITIAE NOCTIS RESPONSORIA
oëtonis vocibus.

MISSA EIVSDEM NOCTIS totidem vocibus.

BEATAE MARIAE VIRGINIS ANTIPHONAE
oëtonis etiam vocibus.

EIVSDEM VIRGINIS SALVE choris tribus &
vocibus vndenis.

Nunc primùm in lucem edita.

SVPERIVS II.



Da comunidade

De sancta Cruz



ANTVERPIAE,

EX OFFICINA PLANTINIANA,

Apud Ioannem Moretum.

M. DCII.

EDVARDI LVI

LVSITANI CIVIS OLISIPOINENSIS

In Metropolim quendam vrbis Ecclesiam



Handwritten signature in brown ink, possibly 'Cristianus' or similar, written across the bottom of the seal.

ANTVERPIAE

EX OFFICINA PLANTINA

Apud Ioannem Moretum.

M. D. C. II.

ILL^{MO} AC R^{MO} DOMINO
D. MICHAELI CASTRENSI
OLISIPONENSI ARCHIEPISCOPO
METROPOLITANO,
EDVARDVS LVPVS IN OLISIPONENSI
ECCLESIA MVSICES PRAEFECTVS
FELICITATEM SVMMAM EXOPTAT.



PVSCVLA quædam de re Musica
à me iam olim elucubrata, non eo
tamen consilio, vt publica face-
rem; nunc, Præful illustrissime, fa-
cere constituo te auspice, te iuben-
te. Neque enim aliter ad opus accingerer à nul-
lo, quod sciam, Lusitanorum hætenus tenta-
tum, nisi tu ipse iuberet, impelleret potiùs.
Quis namque tali patrocinio onus recuset vel
Atlanti formidandum? Ego fanè piaculum
ducerem nulla expiandum victima, nullo pur-
gandum flumine. Nam vt omittam antiquissi-
mum illum iuxtà & nobilissimum gentis tuæ
splendorem, tam longa & annorũ, & auorum
serie nobilitatũ; exactissimam tam diuinarum,
quàm humanarum literarũ cognitionem; am-
plissimum virtutum omnium campum; largif-

simas denique in pauperes manus, inauditam-
que beneficentiam; adeò in hanc nostram Mu-
sicen propensus es, illam potissimum, quæ ad
Christianæ religionis cultum, & ornamentum
pertinet; ita illi deditus, tanta animi contentio-
ne affectus; vt, si qua res maximè in vita, hæc ti-
bi placeat, hæc alliciat, hæc teneat: hæc vna tibi
& in otio voluptati, & in negotio maximo fo-
leat esse leuamini. Hinc fit, vt artis huius peri-
tos plurimi facias, & ipsius maiestatem, harmo-
niam, ac numeros penitissimè intelligas. Non
igitur te præside, Zoilorum morsus, non desi-
dum aufugiam querimonias: quin potius eos
confidētissimè inuadam, ac nouis passim eden-
dis ita emolliam, ita conuincam, ac frangam, vt
in meliorem fortassis reducantur frugem, fa-
pian quidem. Nunc tantùm parua hæc damus,
ne prima grauemus principia; daturi prope-
diem maiora quidem, meliora fortasse; omnia
tamen tuis bonis auibus, tuo felicissimo auspi-
cio. Vale, Præsul optime, ac nos ama, tuere, pa-
trocinare. Olisipone. Calend. Octob. ∞ 133.

EDVAR.

EDVARDO LVPO
IN OLISIPONENSI ECCLESIA

MVSICES PRAEFECTO

EMMANVEL CORREA iuris Canonici Licentiatus
primam noui operis editionem gratulatus ita cecinit.

DVM ludunt alij, teruntque vanis
Tempus colloquijs, vagantur, errant
Vrbis compita per frequentiora
Fracti desidia, otioque turpi;
Tu solus latitans in aede sola,
Inclusus sine tertio & secundo
Scribis, quæ placeant choro Sororum;
Quæ discat potius chorus Sororum:
Quæ Phæbus cupida reposcat aure;
Quæ cantus stupeant peritiores:
Quæ demum Archiepiscopus MICHAEL
CASTRVS, Lysiadae corona gentis,
CASTRVS Pieridum leuamen optat
Excudi; iubet, instat, imperatque
Captus harmoniæ suauitate.
Ergo perge, LVPE EDVARDE, perge
Æternam tibi gloriam mereri,
Æternum patriæ parare nomen.
Sciant seposita orbe nationes,
Extremum Hesperia angulum tenere,
Orbis quem cupiat tenere magnus.

EIVSDEM EMMAN. CORREÆ

OCTASTICHON

AD CANTOREM.

QVI sanctam celebras noctem nascentis Iesu, *indign*
Ac semper puræ dulce parentis Aue;
Hunc paruum folijs, magnum tamen arte libellum
Perlege, quem docti dat tibi Musa Lupi.
Inuenies, quæ doctus ames, quæ cantor honores;
Quæ sint apta choro, nec minùs apta domo.
Quòd si verus eris iudex, clamabis vbiq̃ue,
Melpomenen propria composuisse manu.



EDVAR-

EDVARDI, LVPI LVSITANI

IMATISVPERIVS II.

RESPONSORIVM SECVNDVM.

Chorus 8. voc.



Odie nobis. Pax, pax vera descen dit. Hodi e



per totum mun dum melli flu i facti sunt cæli.

*Vers. 3. voc. tacet: fini-
to versu, Resp. chorus.*



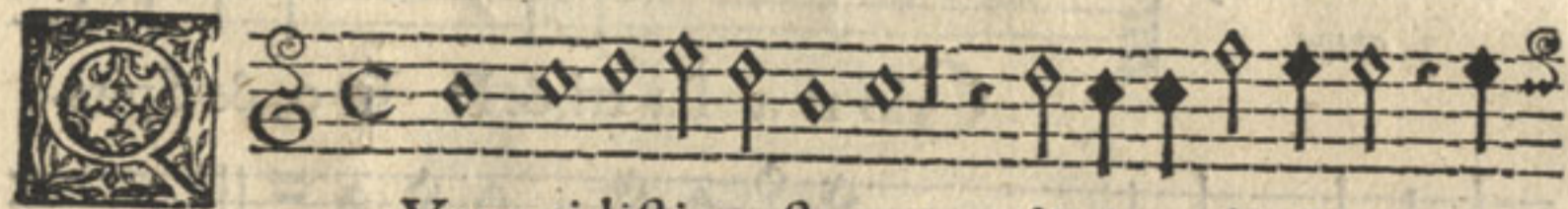
Ho di e per totum mun-



dum melli flu i fa cti sunt cæli.

RESPONSORIVM TERTIVM.

Chorus 8. voc.



Vem vidistis pastores? di ci te, di ci te, an-



nunci a te no bis, in terris quis appa ru it?

Natum

SUPERIVS II.



Natum vidimus, & chorus Angelo-

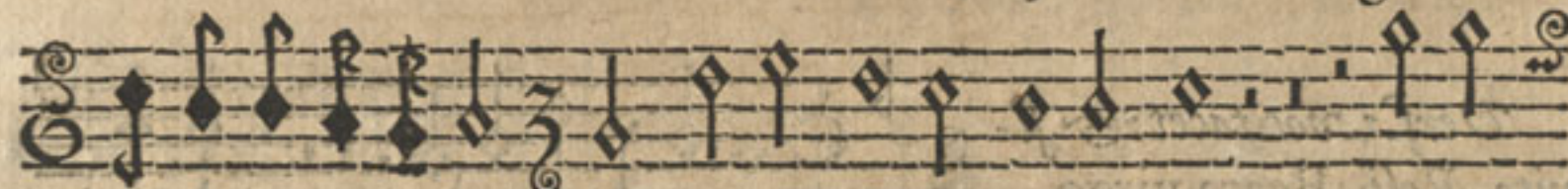


rum collaudantes Dominum, collaudantes Dominum.

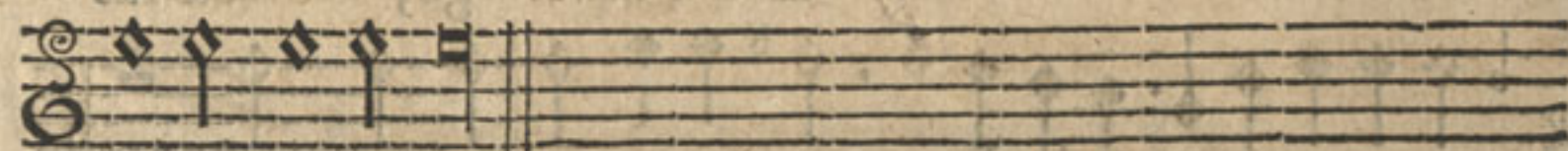
*Vers. 3. voc. tacet:
& finito, Resp. chorus.*



Natum vidimus, & chorus Angelo-



rum collaudantes Dominum, collau-



dantes Dominum.

Gloria Patri, *tacet: & finito, Resp. Natum vidimus, vt supra.*

RESPONSORIUM QVARTVM.

Chorus. 8. voc.



Magnum myste-
ri um, & admi-
ra-
bi-
le
sacra-

SUPERIVS II.

fa cramētum, vt animalia iacentem in

præsepio! Beata virgo, cuius viscera

meruerunt portare Dominum Christum.

Vers. 1. voc. tacet: & finito, Resp. Beata virgo.

Beata virgo, cuius

viscera meruerunt portare Dominum Christum.

RESPONSORIVM QVINTVM.

Chorus 8. voc.

Beata Dei genitrix Maria, inta-

NATALITIAE NOCTIS RESPONS. VIII. VOCIBVS. II
 SUPERIVS II.

in ta cta permanent, ho di e ge nu it Sal ua-
 to rem fa cu li, Salua torem fa cu li, Salua torem fa cu li.

Vers. 3. voc. tacet: finito versu, Resp. Hodie genuit,

Ho di e ge nu it Salua-
 to rem fa cu li, Salua to rem fa cu li, Sal ua torem fa cu li.

RESPONSORIVM SEXTVM.

Chorus 8. voc.

San cta & im ma cu la ta vir gi ni tas, qui-
 bus te lau dibus ef fe ram nesci o: qui a quem, tu-
 o gre-

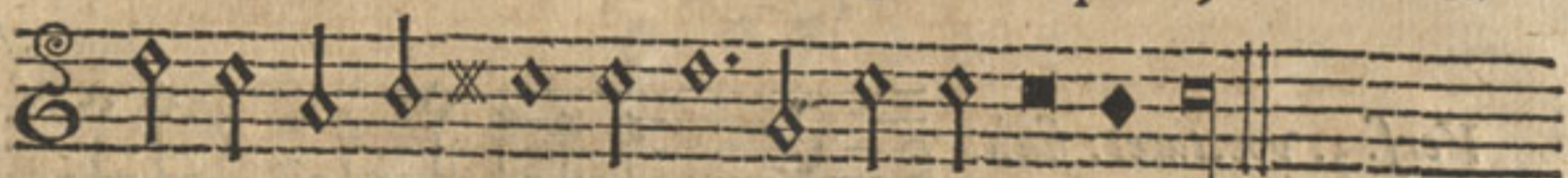
EDVARDI LVPI LVSITANI
SVPERIVS II.



o gre mi o con tu li sti, con tu li sti.



Qui a quem, tu-

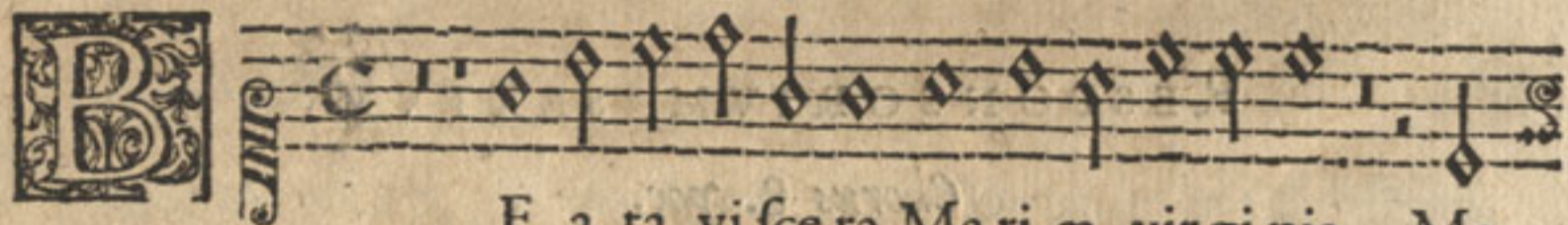


o gre mi o con tu li sti, con tu li sti.

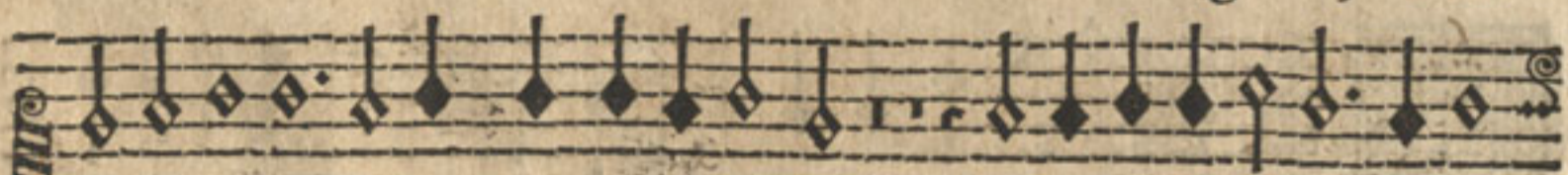
Gloria Patri, tacet: & finito, Resp. Quia quem, vt supra.

RESPONSORIUM SEPTIMUM.

Chorus 8. voc.



E a ta vi s ce ra Ma ri æ vir gi nis, Ma-



ri æ vir gi nis, quæ portauerunt: & be a ta v be ra



quæ lactauerunt Christum Dominum: pro salu te mun di de
virgine

SUPERIVS II.

vir gi ne na sci dignatus est, de vir gi ne na sci digna tus est.

Vers. 3. voc.

Dies sancti fi ca tus il-

luxit no bis: veni te gen tes, & ad o ra te

Do minum.

Resp. Quia hodie.

Quia hodie pro salute mundi de vir gi ne

na sci dignatus est, de vir gi ne na sci digna tus est.

EDVARDI LVPI LVSITANI
 SVPERIVS II.

RESPONSORIVM OCTAVVM.

Chorus 8. voc.

Verbum caro factum est, & ha bi-

tauit in nobis: & vidimus, gloriam quasi, gloriam qua-

si Vni ge ni ti à Patre, V ni ge ni ti à Pa-

tre, ple nū gra ti æ & ve ri ta tis.

Vers. 3. voc.

Omni a per ipsum facta sunt, & si ne
 ip so factū est nihil, factū est ni hil.

Resp.

SVPERIVS II.

Resp. Et vidimus.

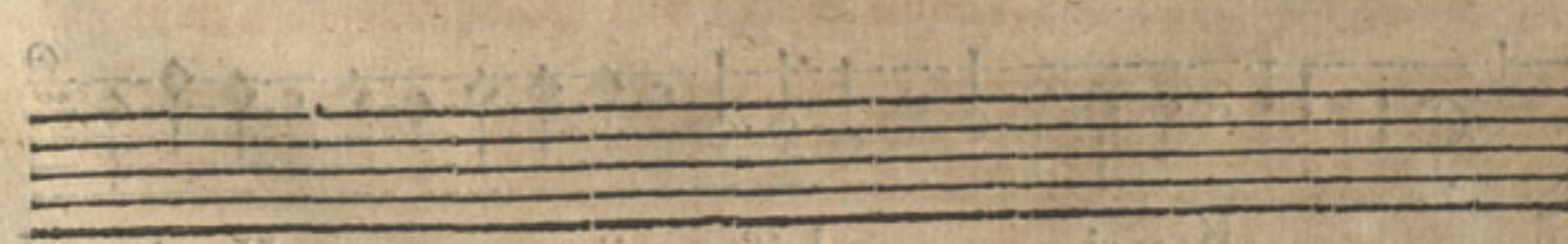
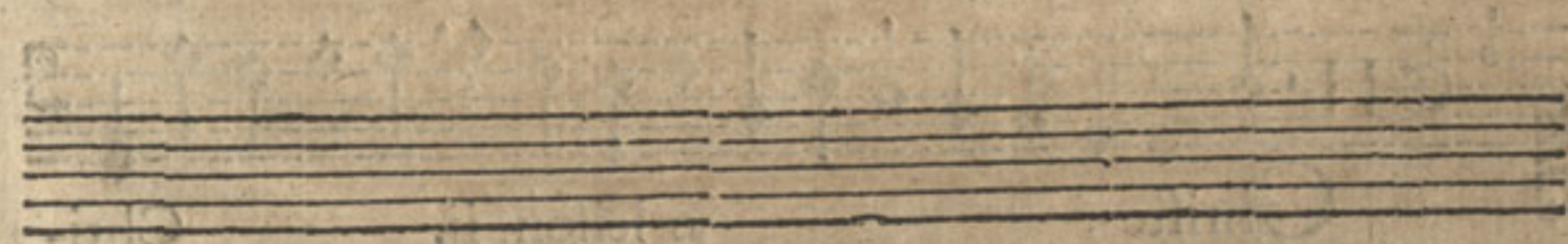
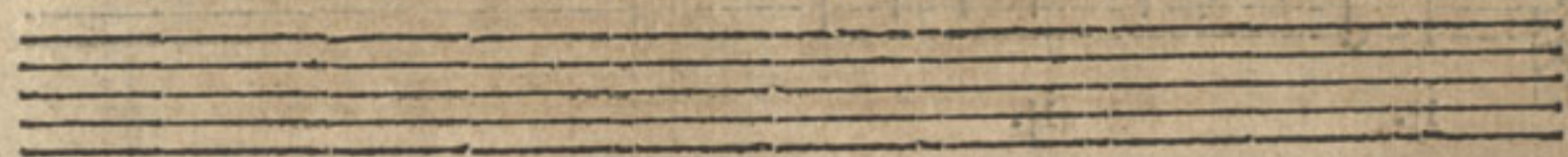


gloriam quasi Vni geniti à Patre, Vni ge ni ti à Pa-



tre, plenum gra ti æ & ve ri ta tis.

Gloria Patri, *tacet: & finito, Resp. Et vidimus, vt suprà.*



EDVARDI LVPI LVSITANI

MISSA NATALITIAE NOCTIS

OCTONIS VOCIBVS.

SVPERIVS II.



Y ri e e leifon, ij.

Ky ri e e leifon,

ij. ij.

Christe e leifon, ij. Chri-


ste leifon, ij.

Ky ri e e leifon, ij. Ky ri e e leifon,


SUPERIVS II.



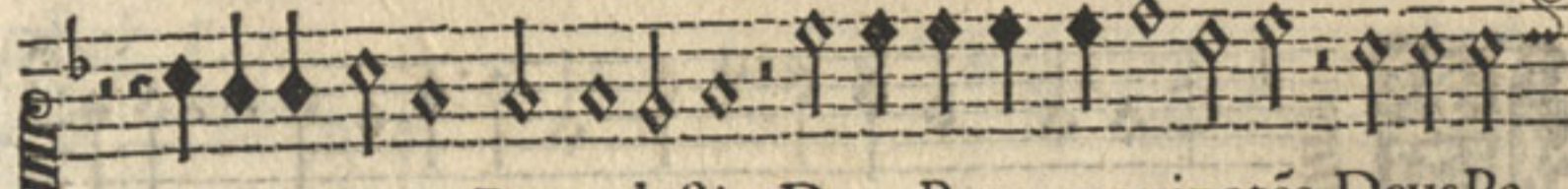
e leison, ij. ij.



E T in terra pax hominibus. Laudamus te,



adoramus te, gratias agimus tibi, gloriam tuam,



Domine Deus, Rex celestis, Deus Pater omnipotens, Deus Pa-




ter omnipotens. Iesu Chri ste, ij.

Domine Deus, *tacet.*



Mi se re re nobis. Qui tollis peccata

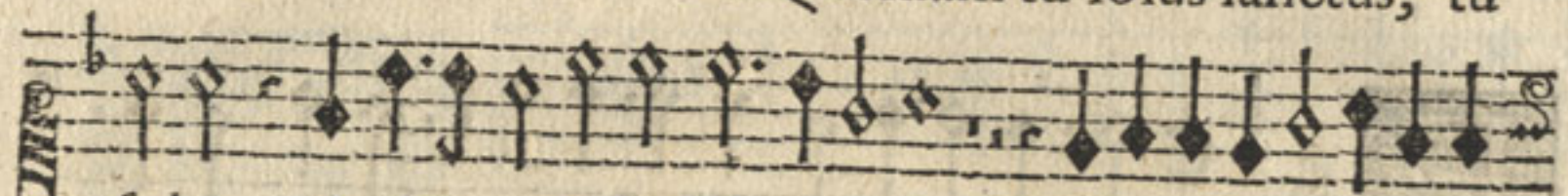


mun di, de pre ca ti o nem no-
cc stram,

SVPERIVS II.



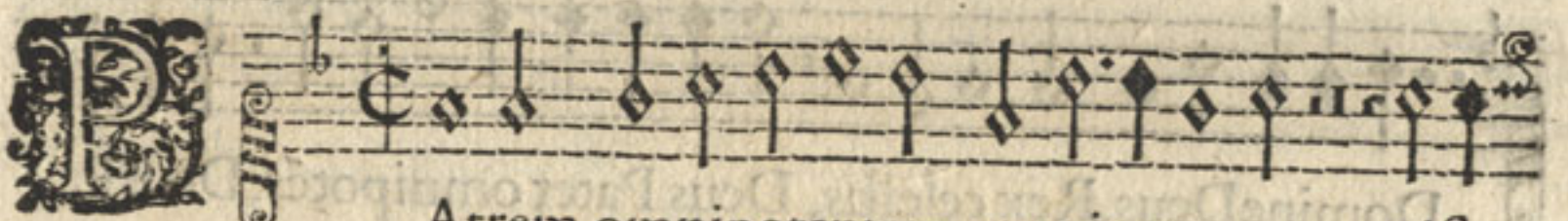
stram. mise re re no bis. Quoniam tu solus sanctus, tu



solus altissimus Iesu Christi: in gloria Dei Patris.



A men. A men.



Atrem omnipotentem, omnipotentem, visi-



bilium omnium. Et in unum Dominum Iesum Christum. Et ex



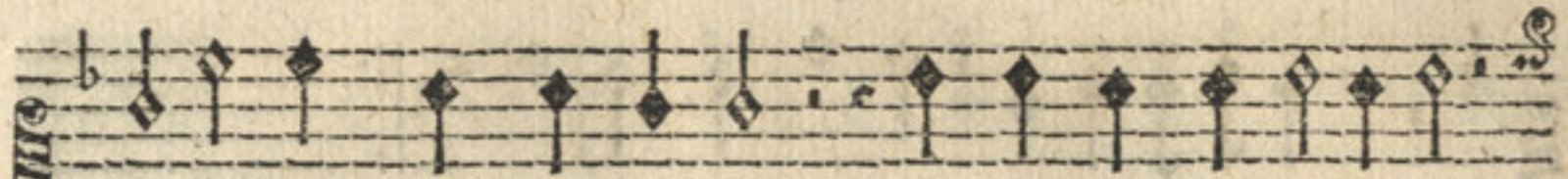
Patre natum ante omnia secula, lumen de lumi-



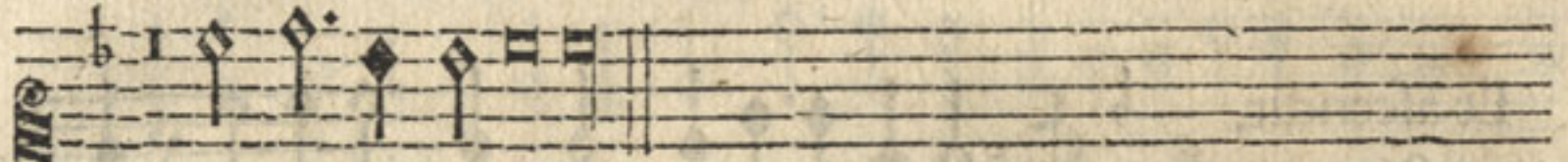
ne, de Deo vero, consubstantialem Patri, per quem omnia

facta

SUPERIVS II.

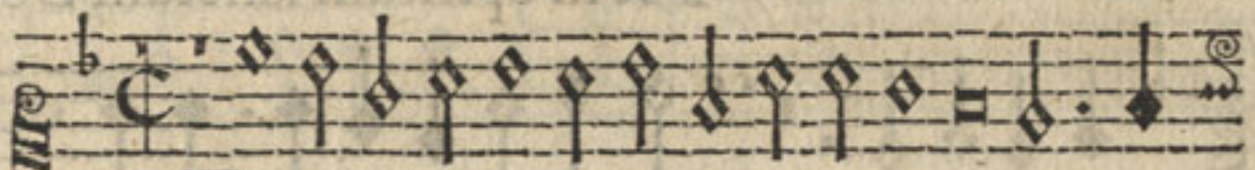


facta sunt. Qui propter nos, qui propter nos homines

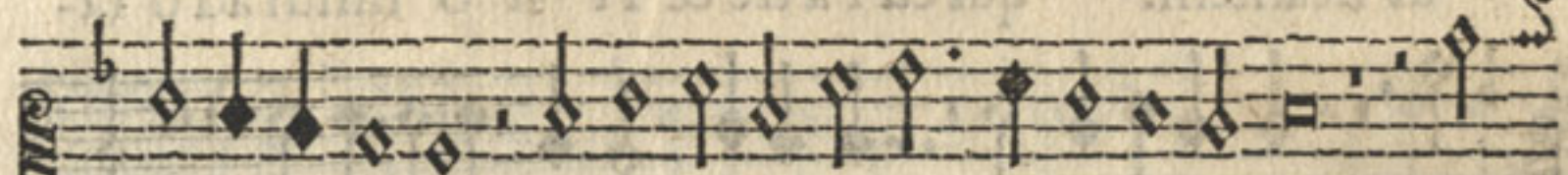


descendit de caelis.

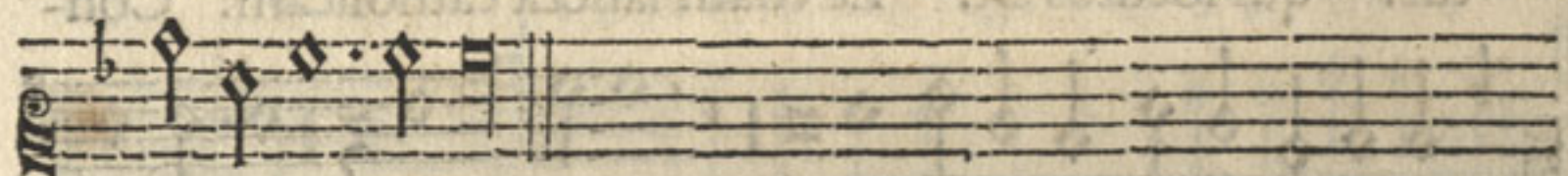
Organum.




Et in carna tus est de Spiritu san-



cto ex Mari a vir gi ne: Et



homo factus est.



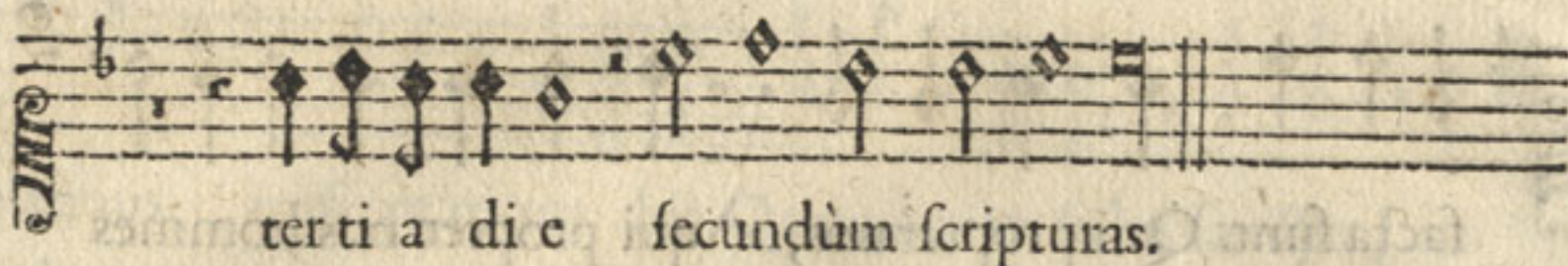
Cruci fixus e tiam pro nobis: passus



& se pultus est. Et re sur re xit

tertia

SVPERIVS II.

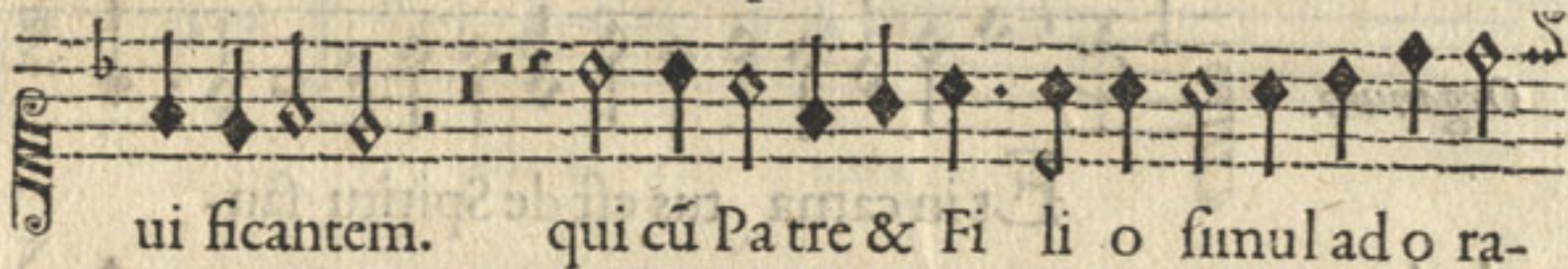


ter ti a di e i secundum scripturas.

Et ascendit,
tacet. Organum.



Et in Spiritum sanctum Dominum & vi-




ui ficantem. qui cum Patre & Filio simul ad ora-



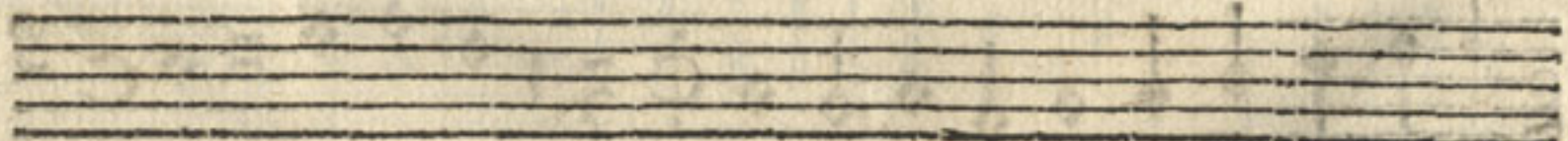
tur: qui locutus est. Et unam sanctam catholicam. Con-



fi te or vnum bap ti sma. Et ex pe cto re sur re-



ai onem mortuorum. Et vitam. Amen. ij.



Sanctus,

SVPERIVS II.

S An ctus, fan ctus Do-
 minus De us fa baath. Ple ni sunt caeli & ter ra
 glori a tu a, O san na in ex celsis.

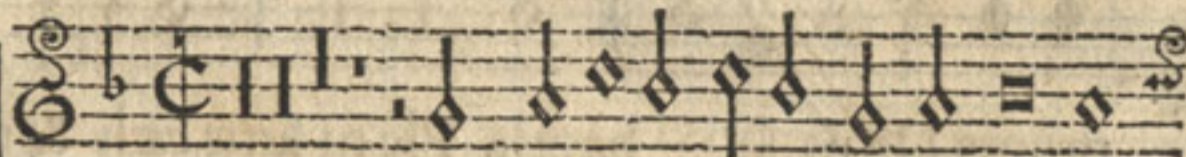
M I se re re nobis. Agnus Dei, qui tollis pec-
 ca ta mundi, dona nobis pacem, dona nobis pa-
 cem. ij.

EDVARDI LVPI LVSITANI

B. MARIAE VIRGINIS ANTIPHONAE

OCTONIS VOCIBVS.

SVPERIVS II. Alma Redemptoris mater.



Væ peruia cæli Porta manes:



succurre cadenti Surge re qui curat



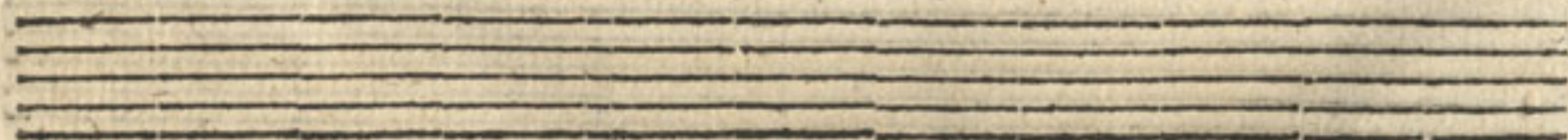
po pu lo: Na tu ra mirante, Virgo prius ac poste-



ri us, Gabri e lis ab o re Sumens illud A-



ue, mi se re re, mi se re re.



SUPERIVS II.

Regina cæli lætare.

R Regina cæli. Al le lu ia: ij. qui a

quem meruisti porta re, Al le lu ia, Al le lu-

ia, Al le lu ia. ij. O ra pro no-

bis De um, Alle lu ia, ij.

Empty musical staff

Empty musical staff


Empty musical staff

EDVARDI LVPI LVSITANI

B. MARIAE VIRGINIS SALVE

CHORIS III. ET VOC. XI.

SVPERIVS CHORI TERTII.



T spes nostra sal ue,

sal ue. Ad te suspiramus ge-

men tes & flen tes in hac lacrymarum

val le, in hac lacrymarum val le.

Eia ergo
tacet.

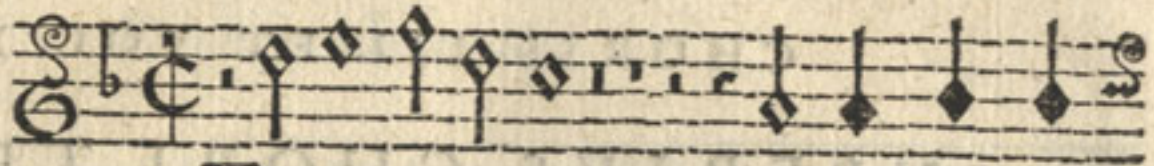
Empty musical staves for accompaniment.

Chorus

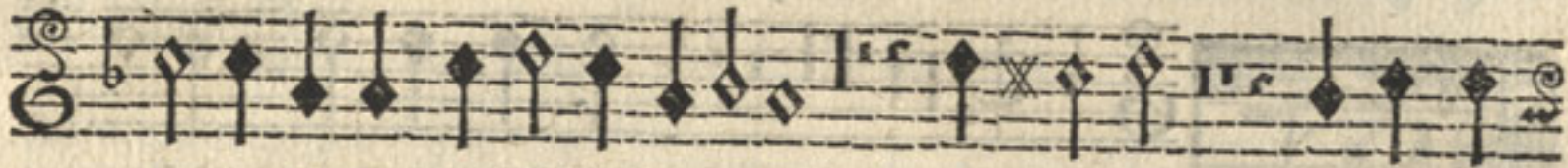
EDVARDI LVPI B. MARIAE VIRG. SALVE.

SVPERIVS CHORI TERTII.

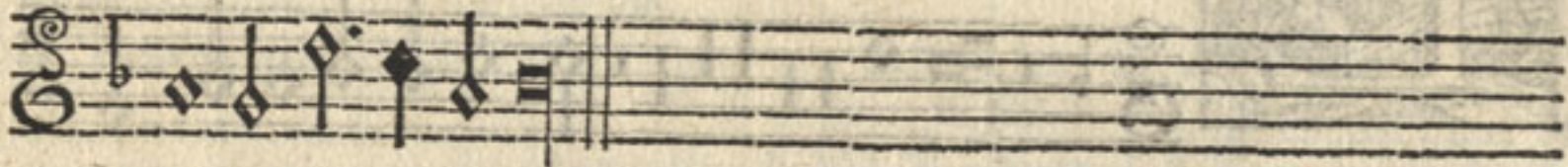
Chorus 8. voc.



Et le sum nobis post hoc



ex i li um ostende, ostéde: O pi a virgo Ma-



ri a, Ma ri a.

FINIS.



A N T V E R P I Æ,
E X O F F I C I N A P L A N T I N I A N A,
A P V D I O A N N E M M O R E T V M.
c l o . I c c i i .



ANTVERPIÆ

EX OFFICINA PLANTINIANA

APUD IOANNEM MORETVM.

CLC. LCCII.



M
6



Handwritten text in blue ink, possibly a signature or a name, located on a small white label attached to the central strip.