

## ADVESPERAS

Antiphona

**F** I li æ Je rúfa =

lem nunti â te di lécto

me o; quia amôre lánque

O e.u.o.u.a. e.

Aña.

**D** I lèctus meus



mihi, & ego illi, qui pas-



ci tur inter lili a.



e. u. o. u. a. e.

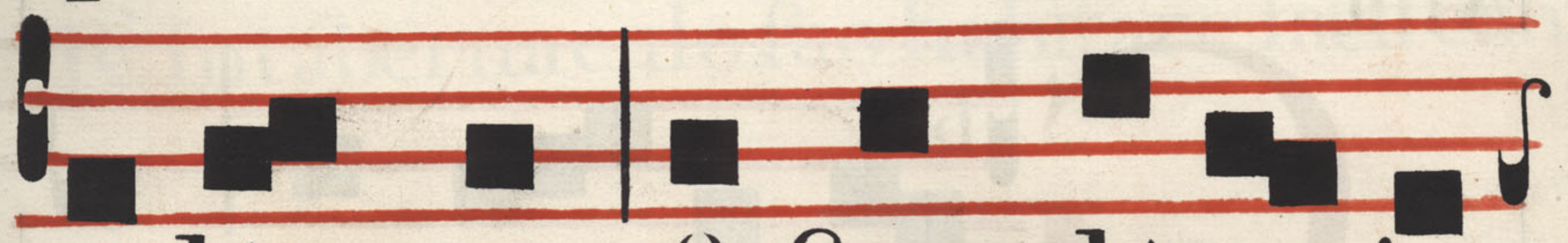
An̄a



Lorête flo res



qua fili li um, & da te



o dô rem, & frondête in=



gra tiam. e. u. o. u. a. e.

Añã.



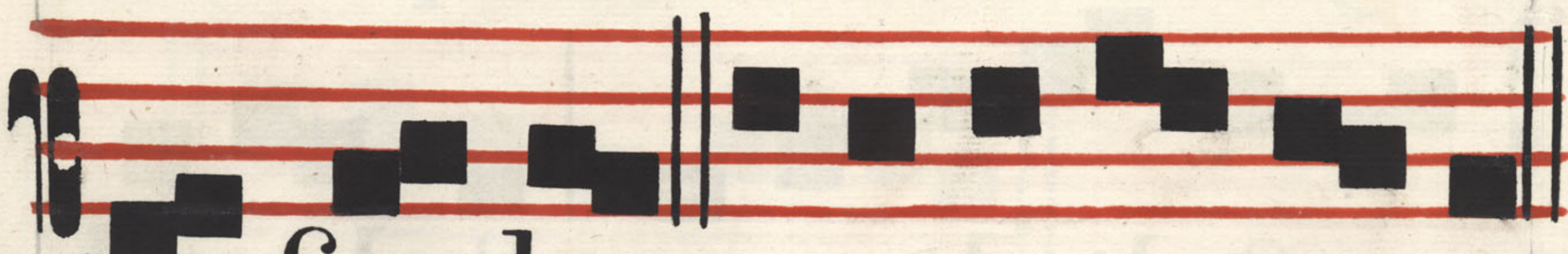
I at cor me um



im maculâ tum in justi-



fî cati o nibus tu is, ut nõ

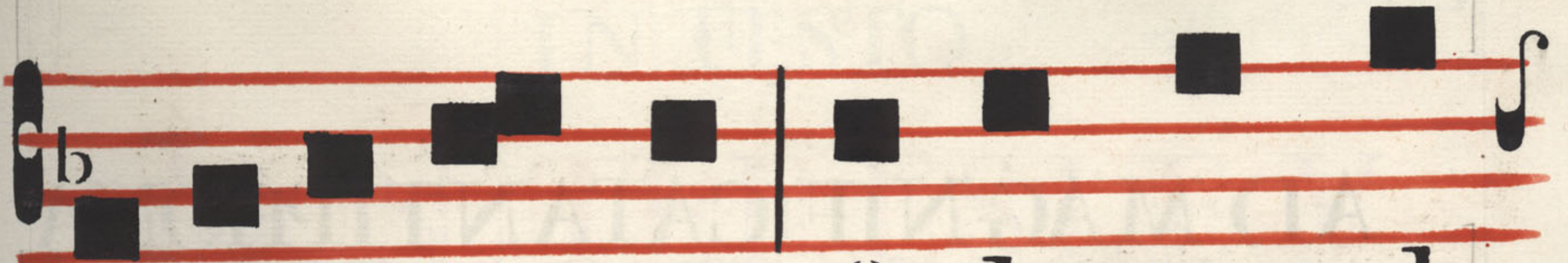


confundar. e. u. o. u. a. e.

Añã.



Au de a mus,



& exultemus & edemus glo-



riam ei, qui a vene-



runt nuptiæ Agni.



e. u. o. u. a. e.



Hymnus ut supra in primis vesperis

**V** Elêgit eam Deus & præelegit eam

**R** Intabernaculo suo habitare facit eam

## AD MAGNIFICAT ANTIPHONA

**S** Api èn ti am  
 ejus e nar rá bunt gen-  
 tes, & lau dem e jus  
 e nun ti â bit Ecclé-  
 fi a. e u o. u a e.

## IN FESTO

## S.M.N. TERESIÆ V.

In troi tus

**D**

E dit e i =



Do mi nus fa pi =



en ti am, &amp; pruden =



ti am mul tam ni =



mis, &amp; la ti tu dinem



cor dis, qua si a re nam,



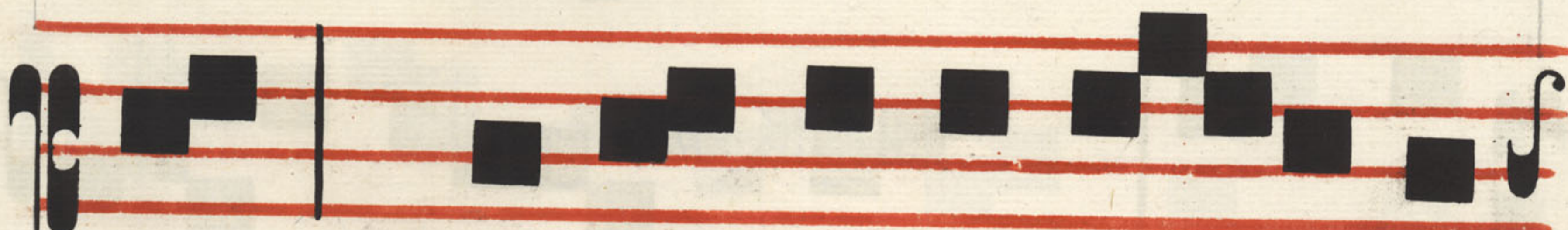
quæ est in lit tore ma =



ris. Pf. Canta te



Domino canticum no



vum: qui a mirabi li a



fe cit. *ψ* Glo ri a patri =



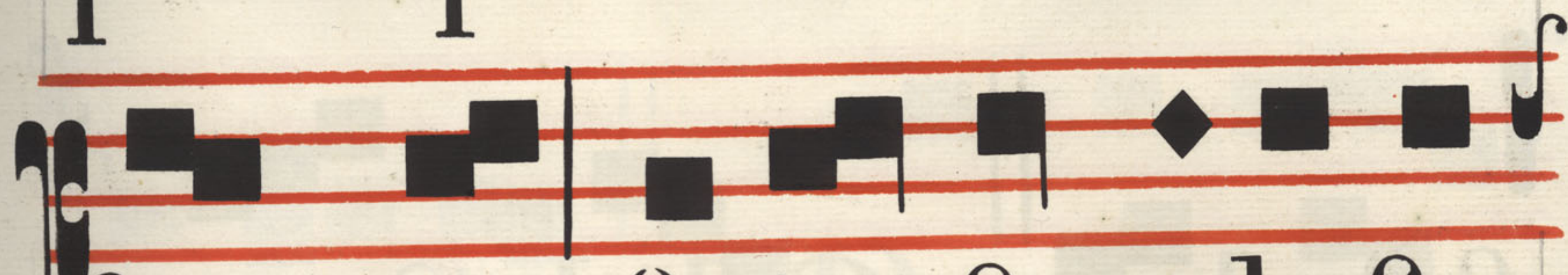
& Fíli o, & Spiri tu i =



Sancto: Sicut erat in =



principi o, & nunc, &



femper, & in fæcula fæ



culó rum, A men

Grad.

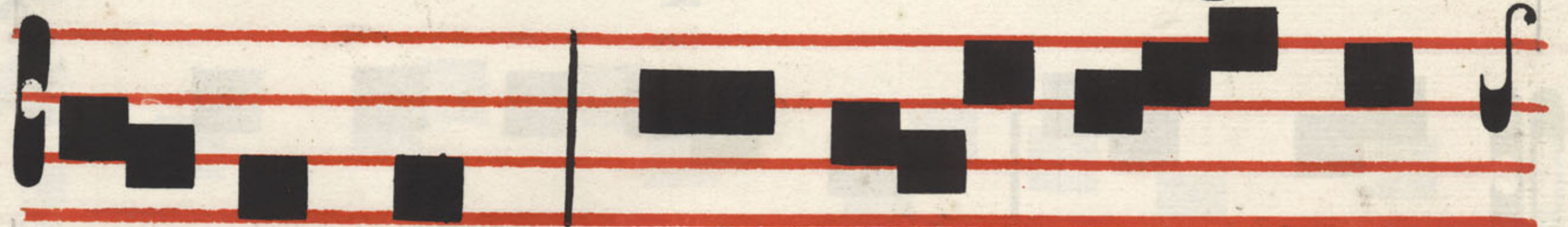


**D** Anti mi hi fa =





prien ti am da bo glo



ri am: ze la ta fum



bo num, & non con =



fun dar. *v* Col lucta =



ta est a nima mea in



il la, & in fa cien do

e am con firma ta

fum. Al le lu=

i a Al le lu=

ia *ψ* Declara =

ti o fer monũ tu o

rum, Do mine, il lu=



minat, & in



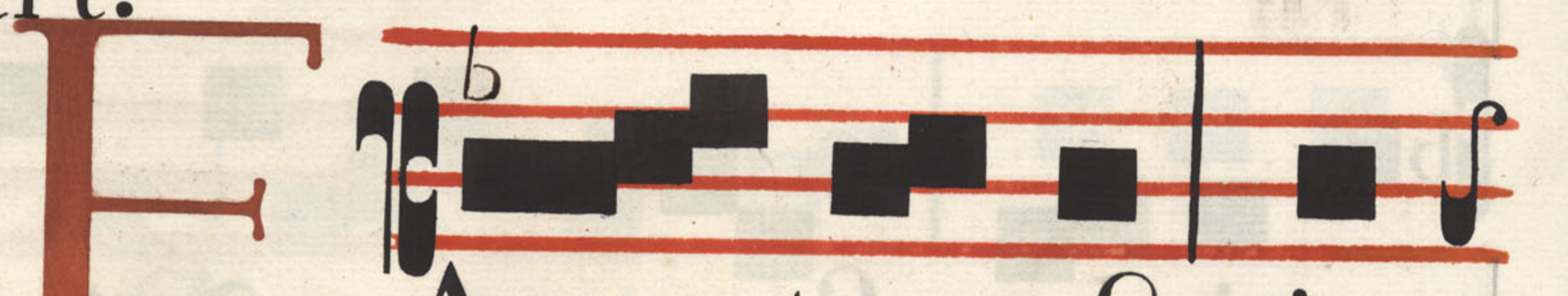
tellec tum dat =



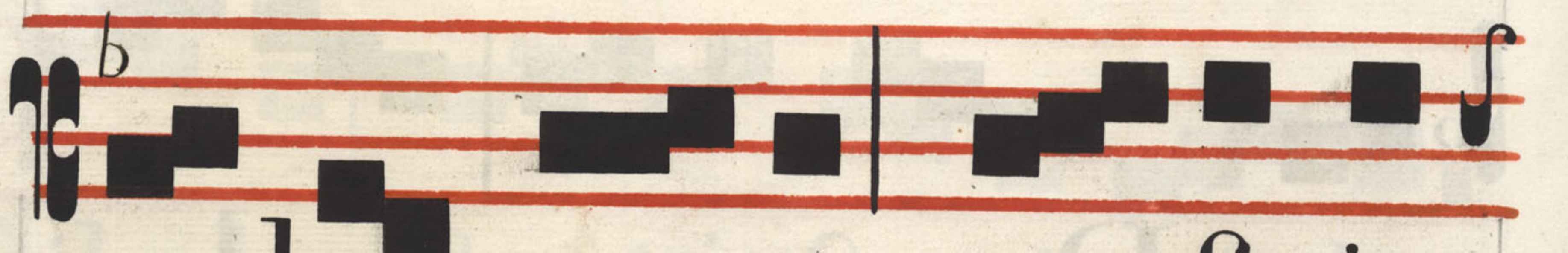
par vu lis.



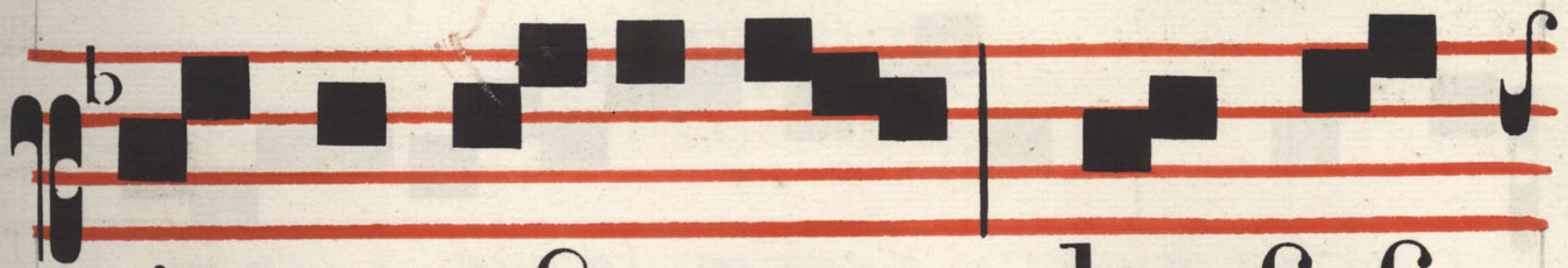
Al le lu ia.  
Offert.



Ac tus est in=



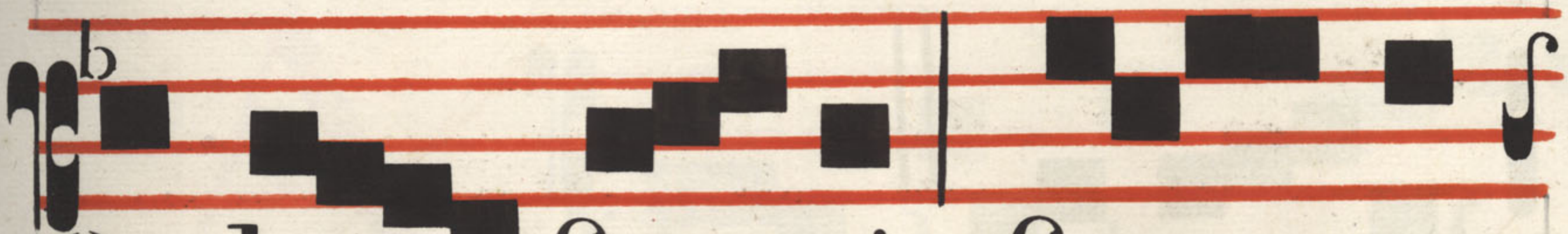
corde me o, qua si ig=



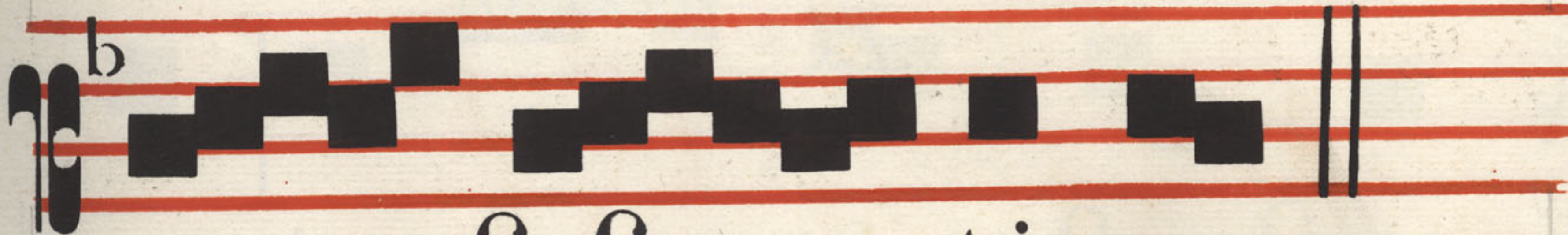
nis exæstuans, claufuf



que in ofsi bus me is,



& de fe ci, fer re



non fuf tinens.

Commun.



**M**



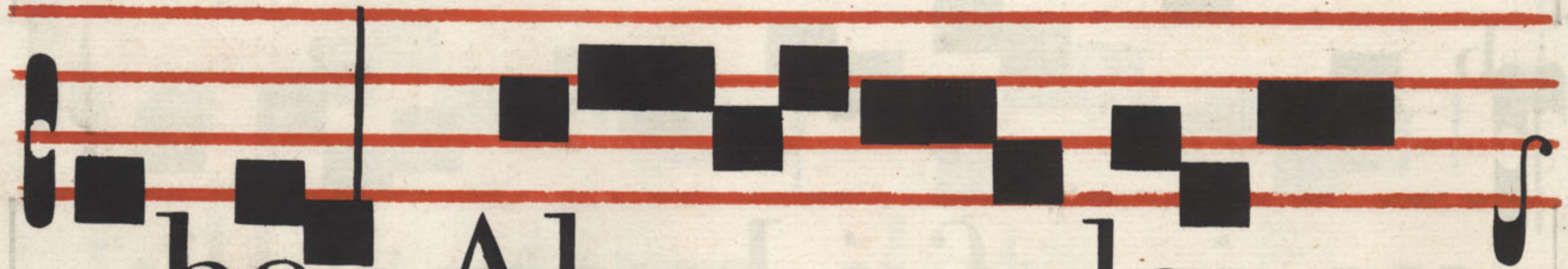
I fe ricordi =



as Do mini in æ ter =



num can ta =



bo. Al le =



lu ia

## IN FESTO

## S. JOANNIS ACRUCE

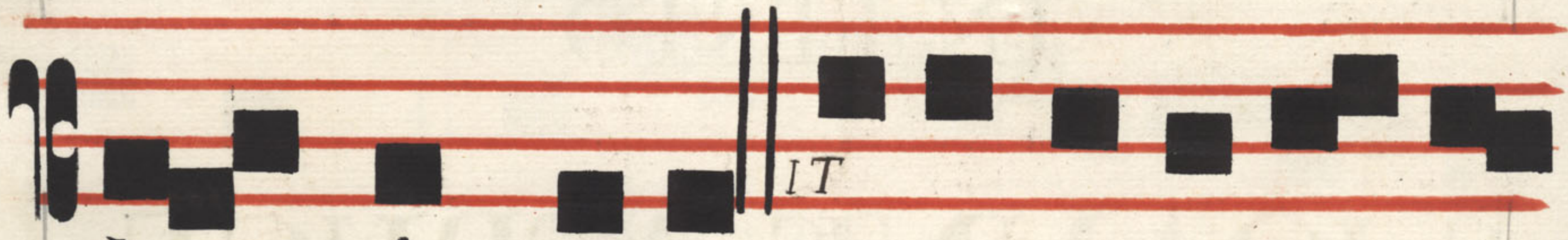
PATIS NOSTRI CONFESSORIS

## AD VESPERAS ANTIPHONA



**A** D dūcam e=  
 um inmon tem sanctum  
 me um, & læ tificá bo  
 e um in do mo ora ti =

A large red initial 'A' is positioned at the start of the first line of music. The text is written in a Gothic script below the staves. A small circular library stamp is visible on the right side of the page, near the middle of the text.



ò nis me æ. e. u. o. u. a. e.

Añã

**L**



I benter glori=



à bor in infirmita ti bus



me is, ut inha bi tet in=



me vir tus Christi.



e. u. o. u. a. e.

Añã

**M**

E di tá bar in =



mandá tis tu is, quæ di lé =



xi, &amp; ex ercé bar



injusti fi cati ó ni bus



tu is. e. u. o. u. a. e.

Añã

**D**

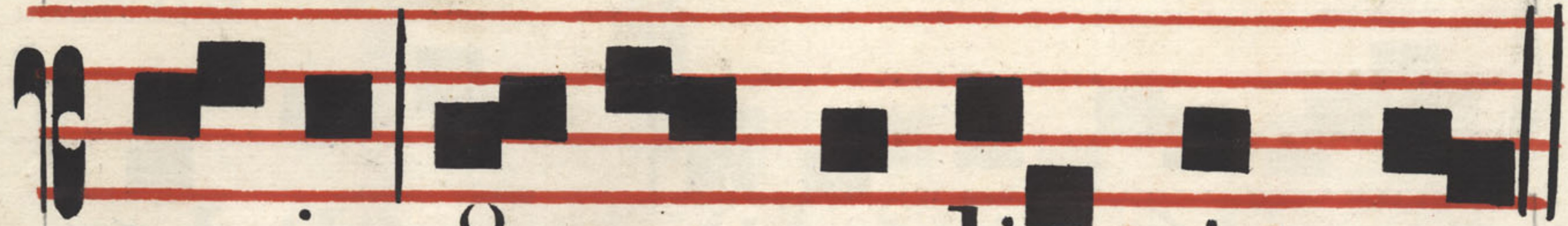
E excèl fo



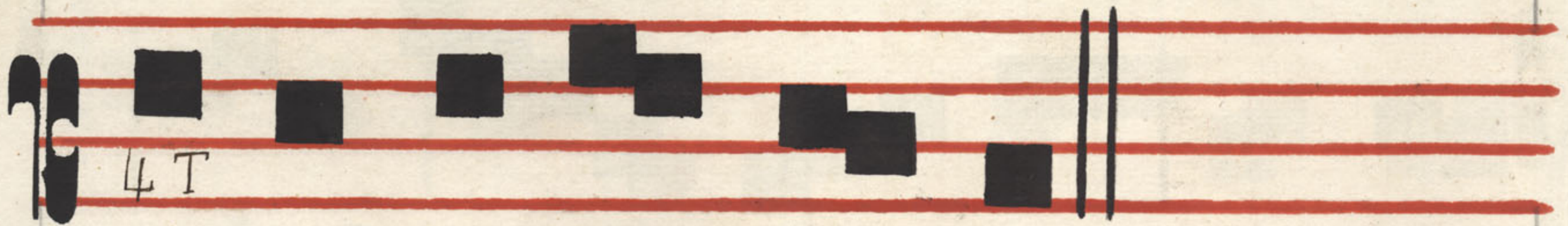




mifit ig nem in òffi bus



me is, & e rudi vit me.



e. u. o. u. a. e

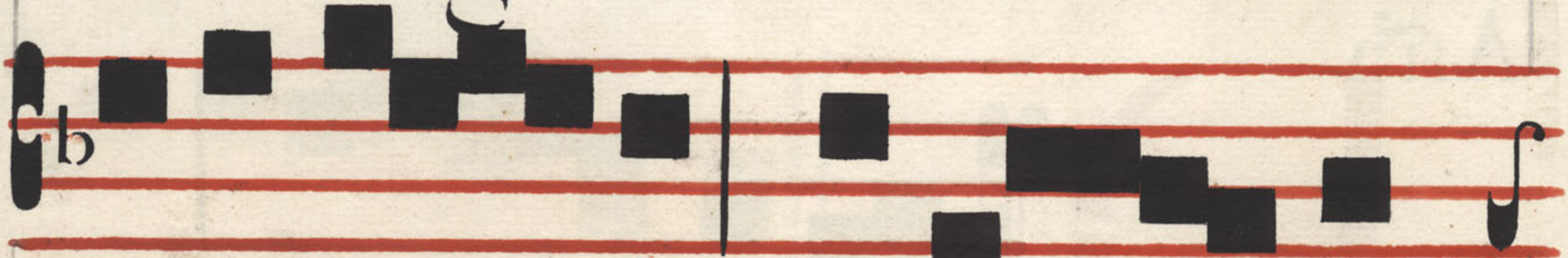
Añã



I li j tu i



de lon ge vè ni ent, & fi =



li æ tu æ de lá te =



refurgent. e. u. o. u. a. e.

Hym-  
ntis

**R**

Egis æterni ge-



nerose Miles, Ordinis=



nostri Còlumen Ioannes,



Quos tu is læti méritis=



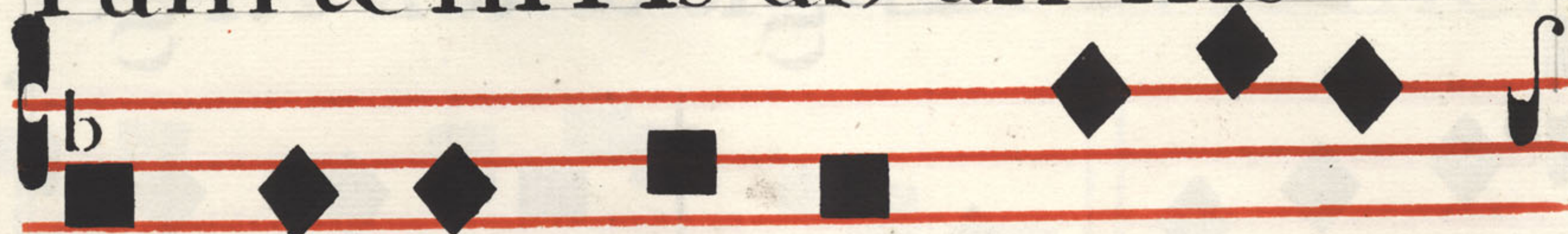
dicàmus Sùf ci pe



pláufus . **P**rofpe remi =



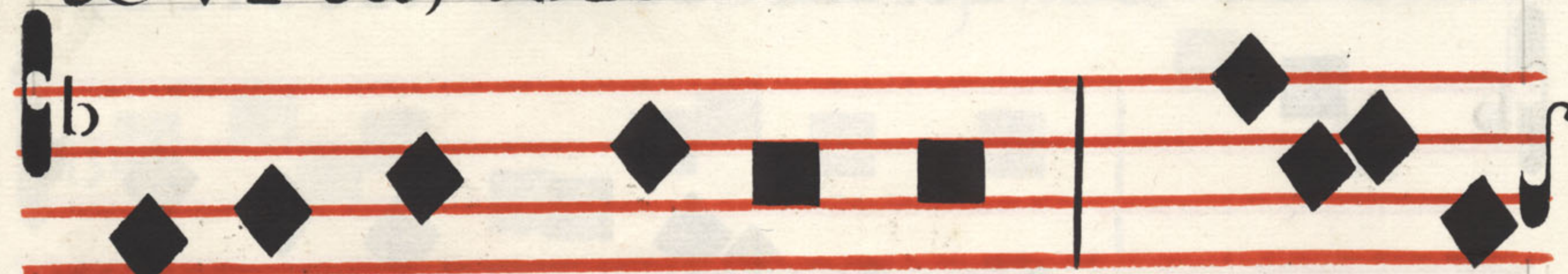
ram teniris ab an nis



virgi nis matris pe re ún =



te vi ta, Bis ma num fentis:



pi a iam dic à tum Ser =



vat a lú num. **P**rimatu

nostræ fo biles Pa rentis,

Quem ti bi credit, pó pu-

lum re formas; Inno vas

tem plum, re fi cis ve tus-

tam Vir gi nis Æ =

dem. Sic Redemptoris fi-

C<sub>b</sub>


mi lán do ges tá, Per cru =

C<sub>b</sub>


cem pri mum rè pe ras de =

C<sub>b</sub>


cò rem Ipse quàmundi

C<sub>b</sub>


re par à vit ò lim Dam =

C<sub>b</sub>


na ru en tis .

C<sub>b</sub>


Cà nticum lau dis Tri à =

dicamur, Cui sacrum

primò célebrans Ioan =

nes, Certa spera tære =

tu lisse gaudet Sig =



na salutis.

Amen.

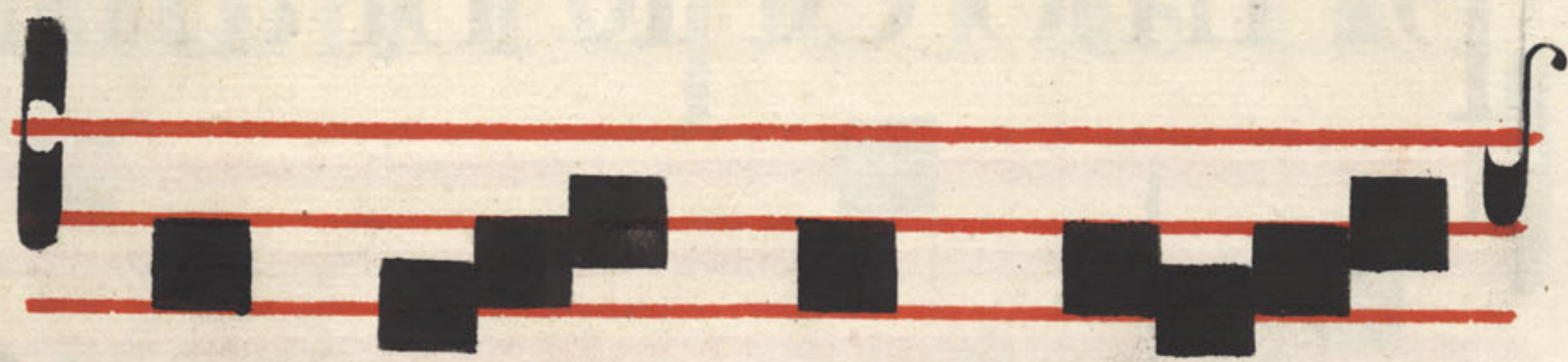


**V** Ora pro nobis S P Ioannes es

**R** Ut digni efficiamur promissionibus christi

AD MAGNIFICAT ANTIPHONA

**Q**



Ui ha bet ze =



lum legis, ex e at pos



me; & descen dè runt



mul ti, quærèntes iu di =



ci um, & iusti ti am in =



de ser tum. e u. o. u. a. e.

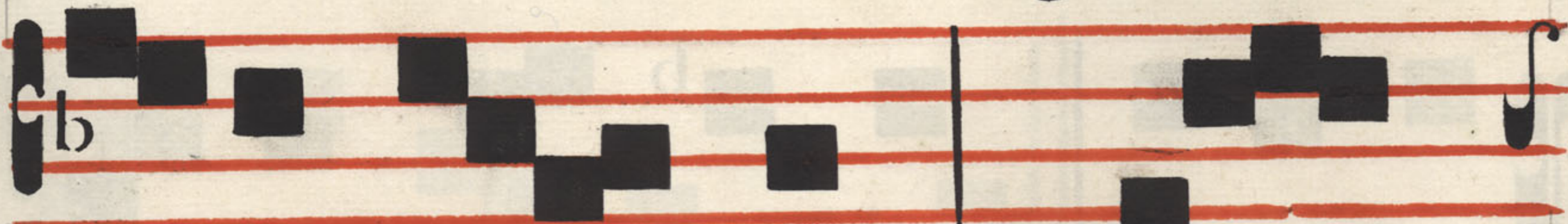
# AD MATUTINUM

Invitatorium

**R**



E gem Con-



fe sso rum Do =

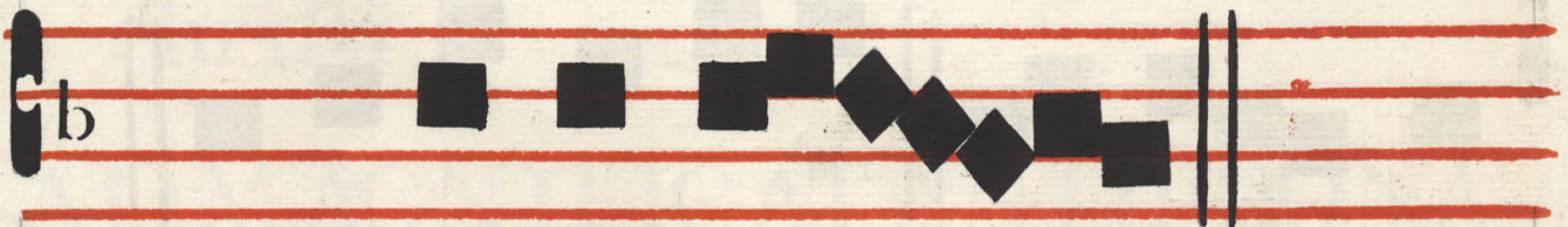


mi num, \* Ve ni te





a do re mus.



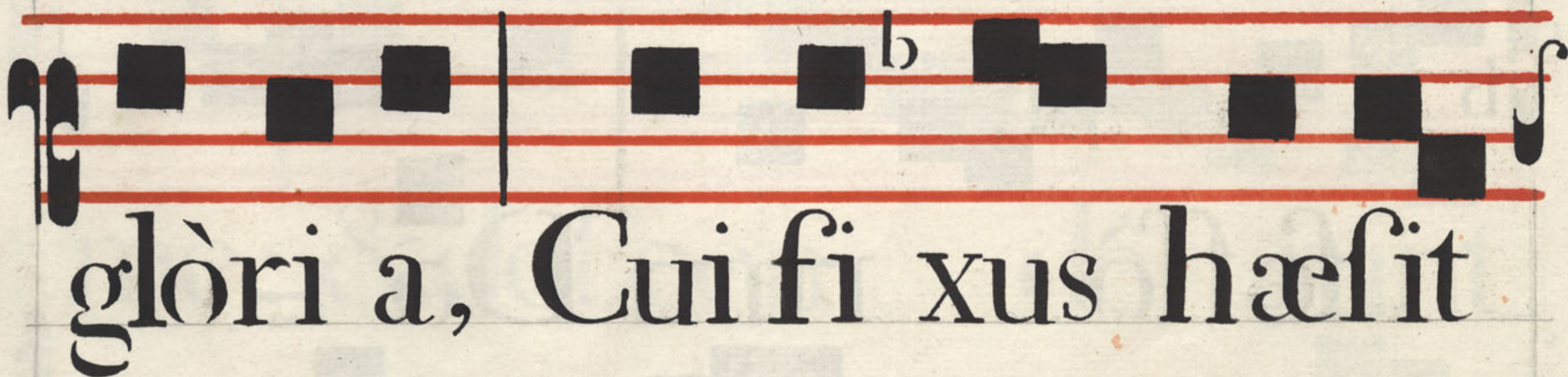
P f. Veni te

Hym-  
nus

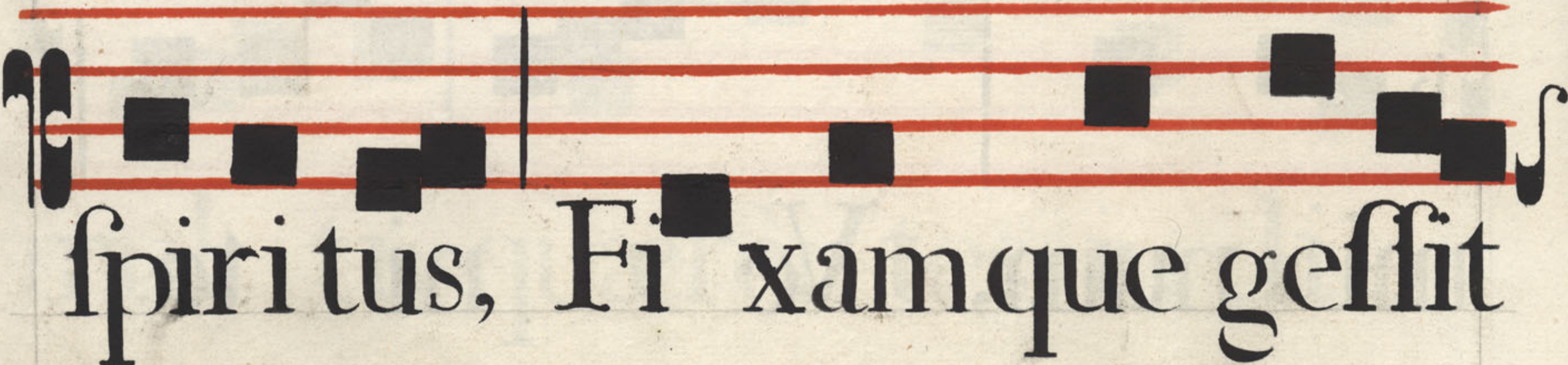


I em Ioannes

ádvehit, Cru cismicàntem



glòri a, Cui fi xus hæfit



spiri tus, Fi xam que geflit

còrpori . **N**on probra,

nec lu dibria, Fames, fla=

gèlla, vincula, Sedàre

jamva lent fitim, Quadu=

ra fortis àp petit.

**H**æc poscit il le gaudi a,



Hæc vult laboris præmia,



Hæc vota confixi Ducis



Vivam referre i magi-



nem. **N**o ctemvò lun tans



misti cã In nocte lucem



pèrcipit, De luce flam-



mam fūfcipit, Carmeli ut




agmen instruat. **T**e Chriſ-



te, laudent Cæli tes, Ti bi



que corda dedita Currant



**I**o anne prævi o, Ad ve-



ra vitæ gaudi a. A men

## AD LAUDES

Hymnus

D



Um crucem gef-



tat Dòmi nus Io. an ni,



Al loquens òffert me ri =



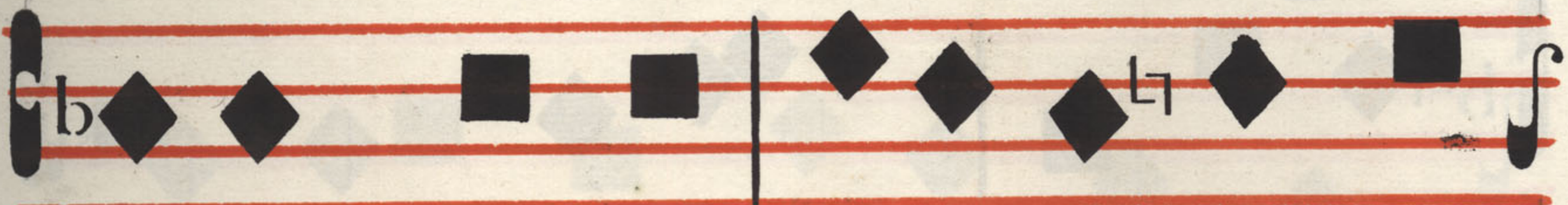
tas coronas Is crucis tan =



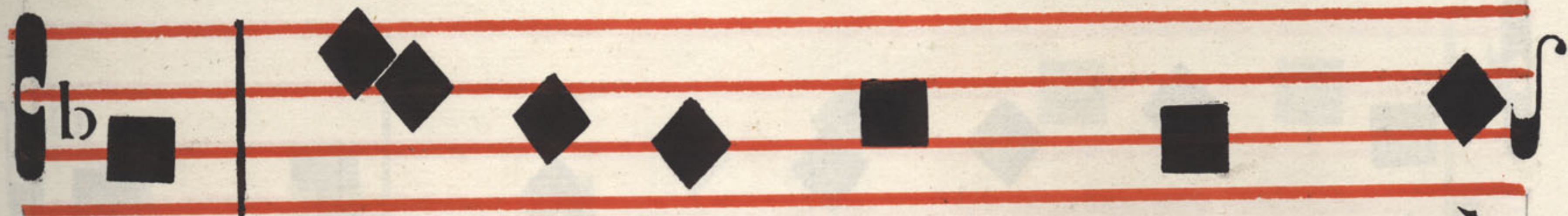
tum càlices a má ros



Sumere poscit. **S**unt pa=



ti ac sperni fuavo tamer=



ces; At fatis nunquam cù=



mulodolorum, Emorinu=



li sub honore notus Inf=



tat habet que. **P**ergra =



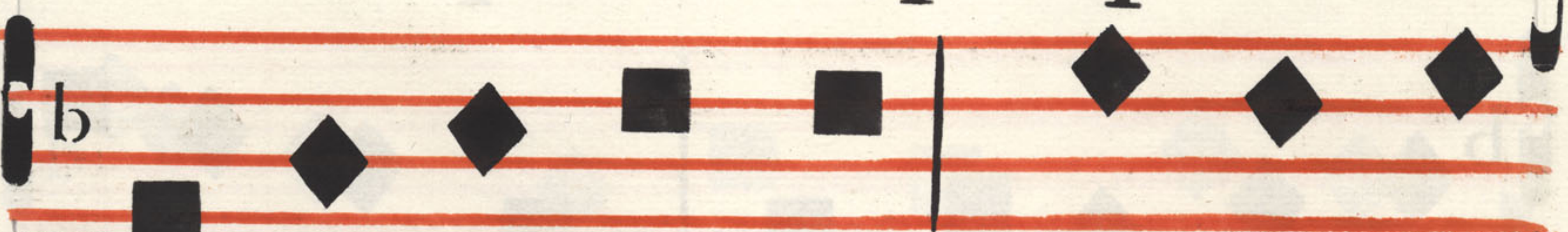
ves tandem crucis hos



la bères Mor te conclù=



dit me ri tùm que pandit



Fi nis extrèmi glòbus ig=



ne fla grans Lap sus O =



lym po. **F**it mi cans æther



radi js cubi le, Là m pa =



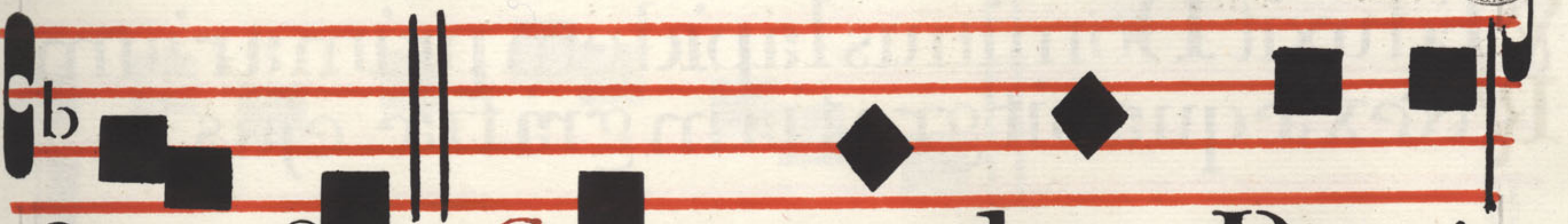
dum lumen tenebréscit



omne; Testis est fragrans



odor ipse vi tæ. Corpore



spàrfus. **S**umma laus Patri,



genitò que Ver bo, & ti =





bi compar utriusque fla=  
men, Quo be a tōrum pi a  
turba semper Pasci tur  
ig ne. A men.

*V* Eduxit Dominus lapidem primarium  
*R* & ex æquabit gratiam gratiæ ejus

ADBENEDITUS ANTIPHONA



**A** Ten dite ad =